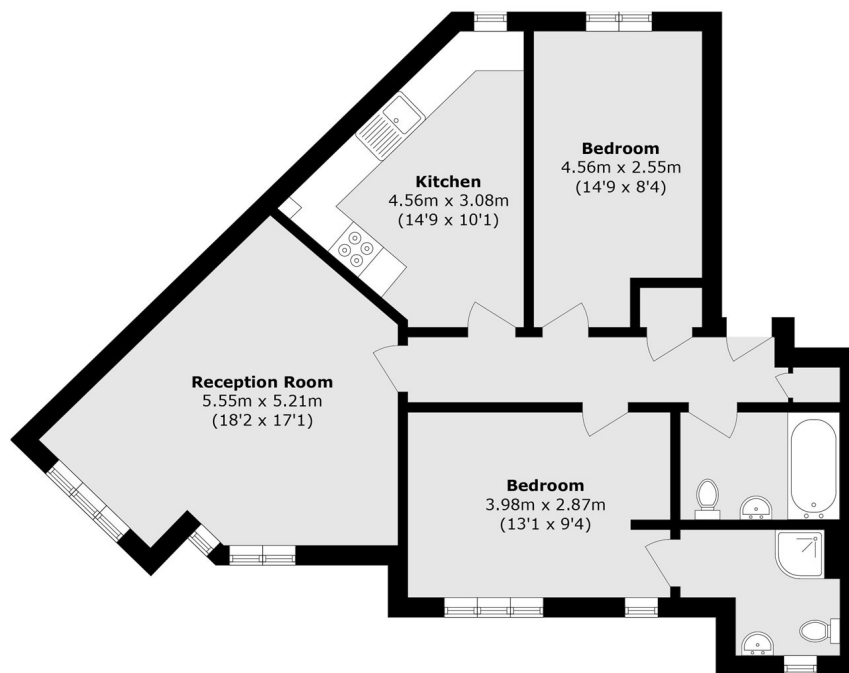




## Grasgarth Close, W3

£369,950

Located within a small and modern purpose built development this bright and spacious two bedroom flat offers excellent levels of living space with links to both local amenities and transport links. The flat comprises a large open plan kitchen/ reception with good space and elevated views, two double bedrooms and family style bathroom. The flat also benefits from a long lease and no onward chain.



Total area (approx.): 69.7 sq. m (750.2 sq. ft)

Robertson Smith & Kempson Acton Sales  
137 High Street, Acton,  
London, W3 6LY  
020 8896 3996  
[actonsales@robertsonsmithandkempson.co.uk](mailto:actonsales@robertsonsmithandkempson.co.uk)

Energy Rating: . We aim to make our particulars both accurate and reliable. However they are not guaranteed; nor do they form part of an offer or contract. If you require clarification on any points then please contact us, especially if you're traveling some distance to view. Please note that appliances and heating systems have not been tested and therefore no warranties can be given as to their good working order.