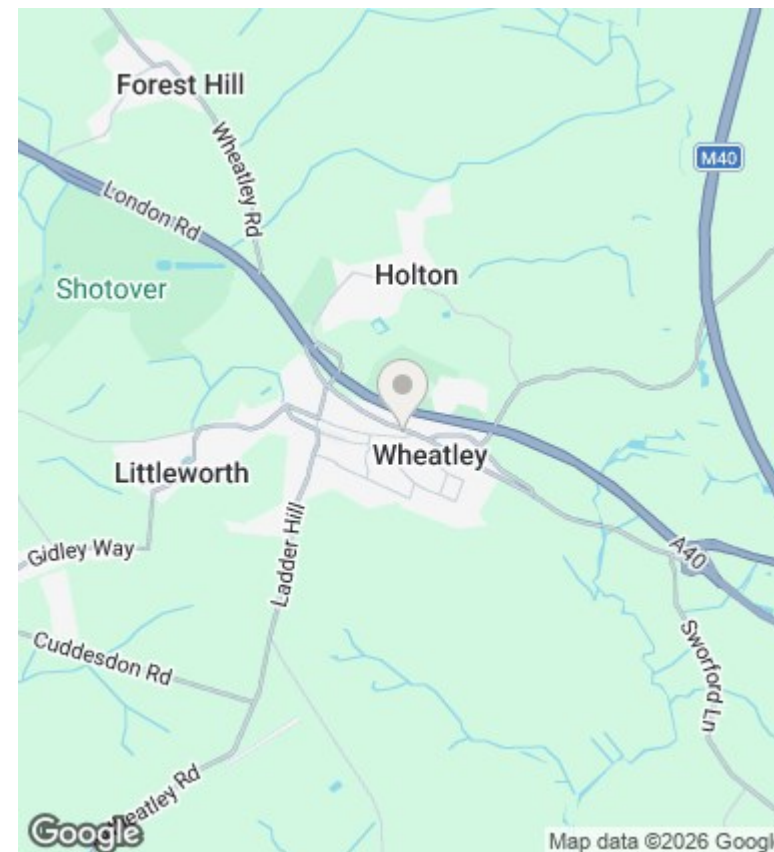
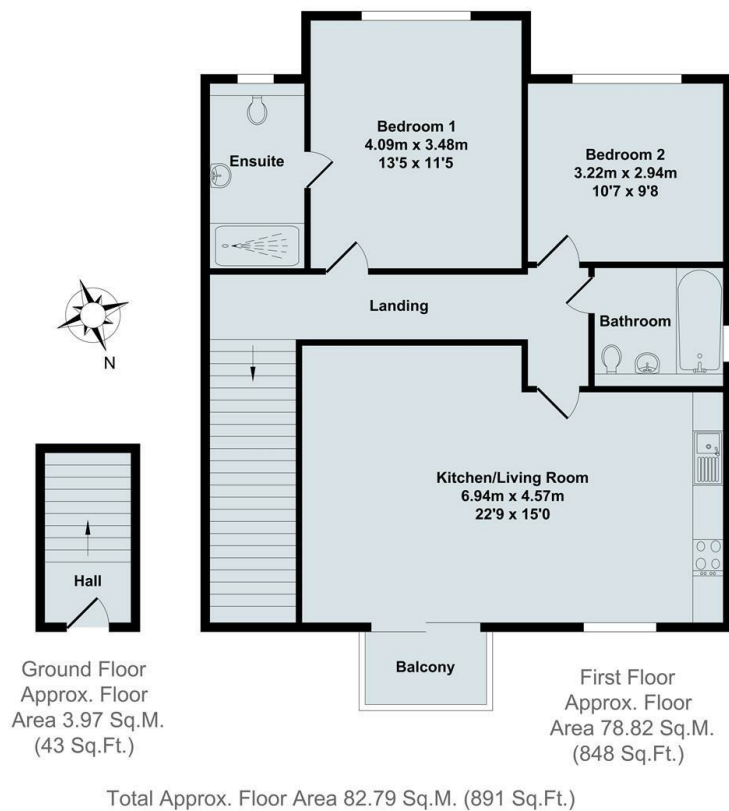




## Flat, 6 Robins Court, Church Road, Wheatley, Oxon, OX33 1ZD

£1,550 PCM - 28th July 2025.

- Two bedrooms
- Balcony
- EPC rating B
- PHOTOS TAKEN PRIOR TO CURRENT TENANCY
- Unfurnished
- Gas CH
- Council Tax Band D
- Two bathrooms
- Allocated Parking
- Mains gas, electricity and water



## Directions

## Viewings

Viewings by arrangement only. Call 01865 515900 to make an appointment.

## Council Tax Band

D

## EPC Rating:

B

Energy Efficiency Rating		
	Current	Potential
<i>Very energy efficient - lower running costs</i>		
(92 plus) <b>A</b>		
(81-91) <b>B</b>	<b>81</b>	<b>81</b>
(69-80) <b>C</b>		
(55-68) <b>D</b>		
(39-54) <b>E</b>		
(21-38) <b>F</b>		
(1-20) <b>G</b>		
<i>Not energy efficient - higher running costs</i>		
<b>England &amp; Wales</b>	EU Directive 2002/91/EC	