



CLARE MEWS, SW6

£1,100,000

Secure gated mews
Private communal gardens
Garage
Close to tube
Moore Park Estate
Energy rating: d

@marshandparsons
marshandparsons.co.uk

MARSH &
PARSONS



ABOUT THE PROPERTY

Tucked away within a private and secure gated mews on the prestigious Moore Park Estate, with access via the highly sought after Waterford Road, a stones throw from the prestigious King's Road. This exceptional home offers a rare combination of tranquillity, security, and convenience in the heart of Fulham.

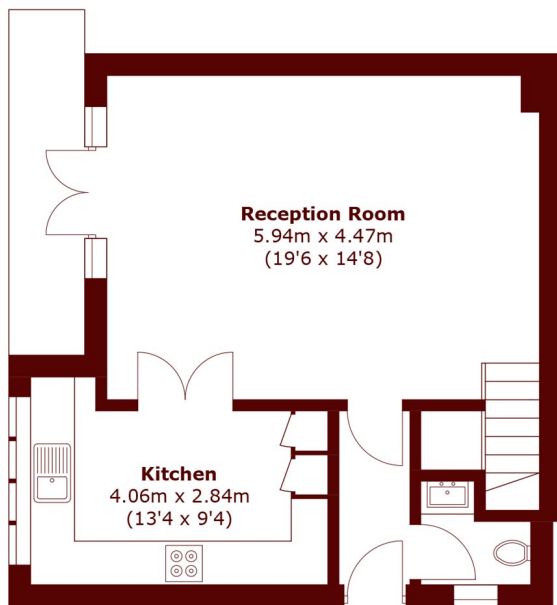
Set around beautifully maintained communal gardens, the development feels like a hidden oasis, despite being just moments from Fulham Broadway Underground Station and the vibrant array of shops, restaurants, cafés, and amenities nearby. The ground floor features a bright and spacious open plan living and dining area, alongside a separate kitchen and a guest WC.



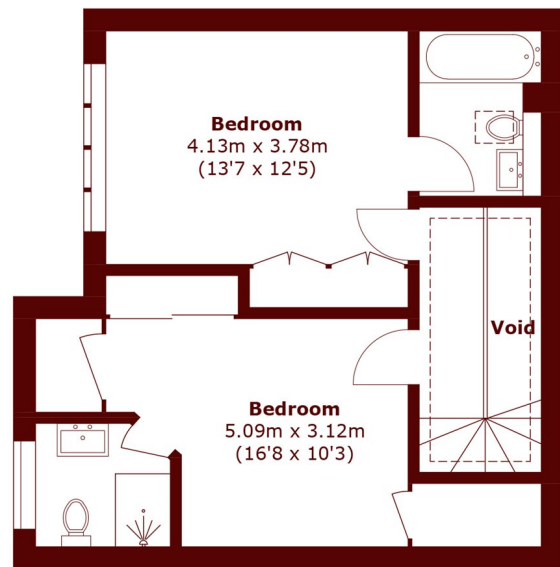
STEP INSIDE CLARE MEWS



(Not Shown In Actual
Location / Orientation)



Ground Floor



First Floor

Total area (approx.): 87.1 sq. m (937.5 sq. ft)
Garage (approx.): 12.2 sq. m (131.3 sq. ft)
(Excluding Void)

Fulham
020 7736 9822

Energy Rating: We aim to make our particulars both accurate and reliable. However, they are not guaranteed; nor do they form part of an offer or contract. If you require clarification on any points then please contact us, especially if you're traveling some distance to view. Please note that appliances and heating systems have not been tested and therefore no warranties can be given as to their good working order

**MARSH &
PARSONS**