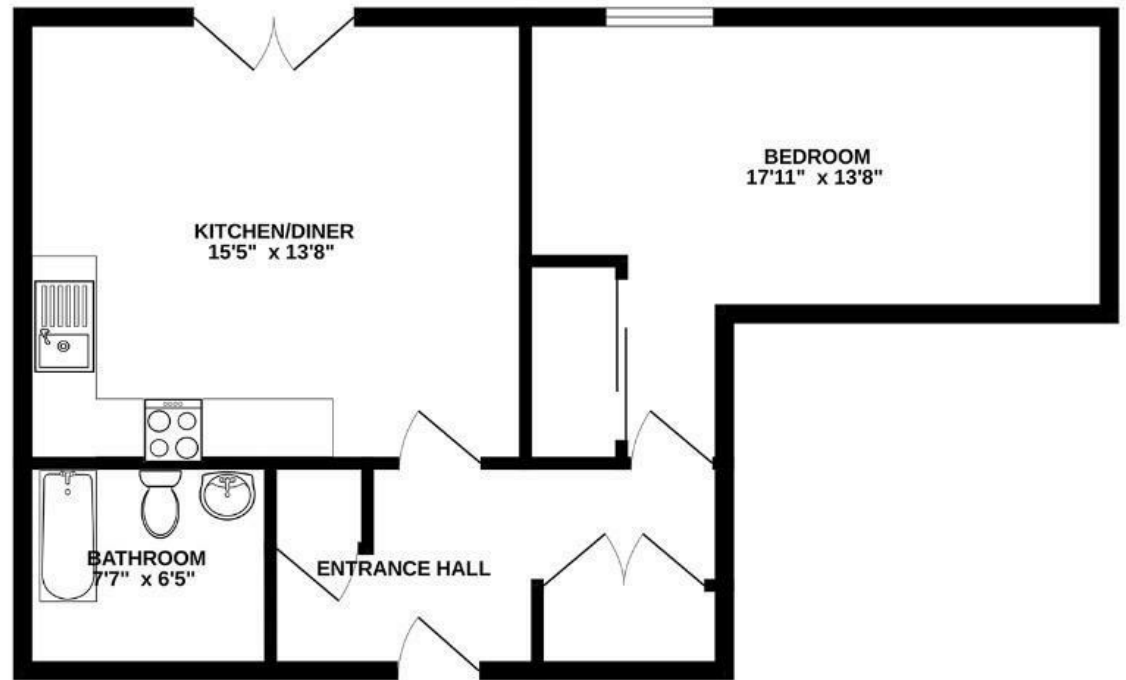


# Abel Yard

## HARBOURSIDE

APPROXIMATE FLOOR AREA  
50 SQM / SQFT 541



**Boardwalk**

# The Gateway

REDCLIFFE, BRISTOL



£270,000



1 Bedrooms



BS1 6ZP



1 Bathrooms

*"Living here has honestly been such a lovely experience. I always loved how peaceful and cosy the flat felt – being on the 4th floor gave it a real sense of privacy, almost like a little escape. Some of my favourite memories are heading out for runs along the Harbourside, especially in the early evenings when the sun would be setting over the water. Afterwards, I'd often grab food from one of the many restaurants nearby or meet friends for a drink along the waterfront."*

