



COPPERWOOD PLACE, SE10

£400,000

Modern apartment
Two double bedrooms
Two bathrooms
Private balcony
Close to stations
Energy rating: b

@marshandparsons
marshandparsons.co.uk

MARSH &
PARSONS



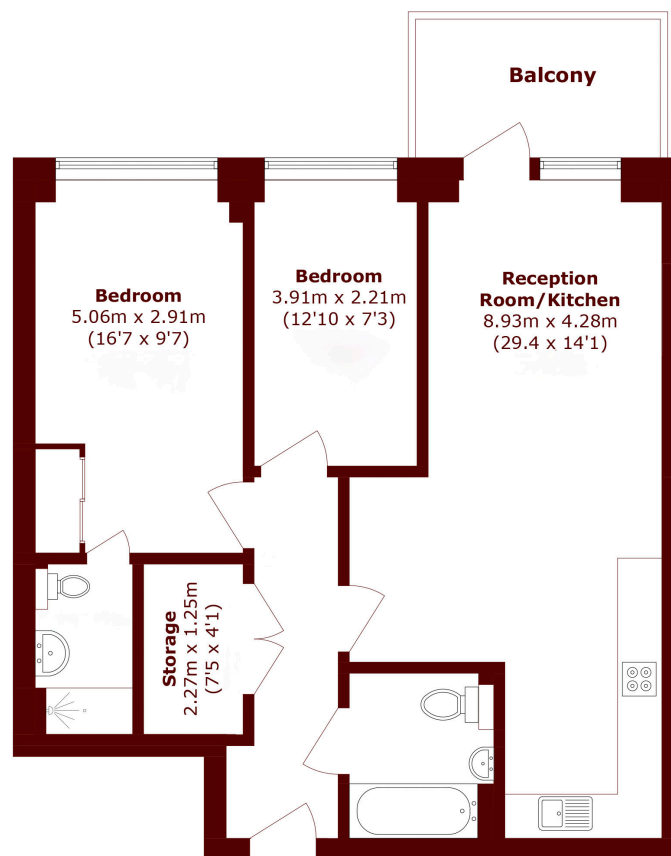
ABOUT THE PROPERTY

This beautifully presented two bedroom apartment offers a spacious open plan reception room, providing ample versatility for both a large dining area and a comfortable lounge. The master bedroom features a convenient en suite and a tall wardrobe, while the second double bedroom and separate family bathroom offer great flexibility for guests or a dedicated home office.

Ideally positioned in the SE10 area, the property is perfectly placed for a short walk to Greenwich or Lewisham stations, offering rapid links into Canary Wharf and the City. The historic charm of Greenwich market and the vast greenery of Greenwich park are also within easy reach.



STEP INSIDE COPPERWOOD PLACE



Total area (approx.): 72.2 sq. m (777.1 sq. ft)

Balcony area (approx.): 6.2 sq. m (66.7 sq. ft)

Greenwich
020 8312 8312

Energy Rating: B We aim to make our particulars both accurate and reliable. However, they are not guaranteed; nor do they form part of an offer or contract. If you require clarification on any points then please contact us, especially if you're traveling some distance to view. Please note that appliances and heating systems have not been tested and therefore no warranties can be given as to their good working order

MARSH &
PARSONS