



Sophia Square, SE16

£1,950 Per calendar month

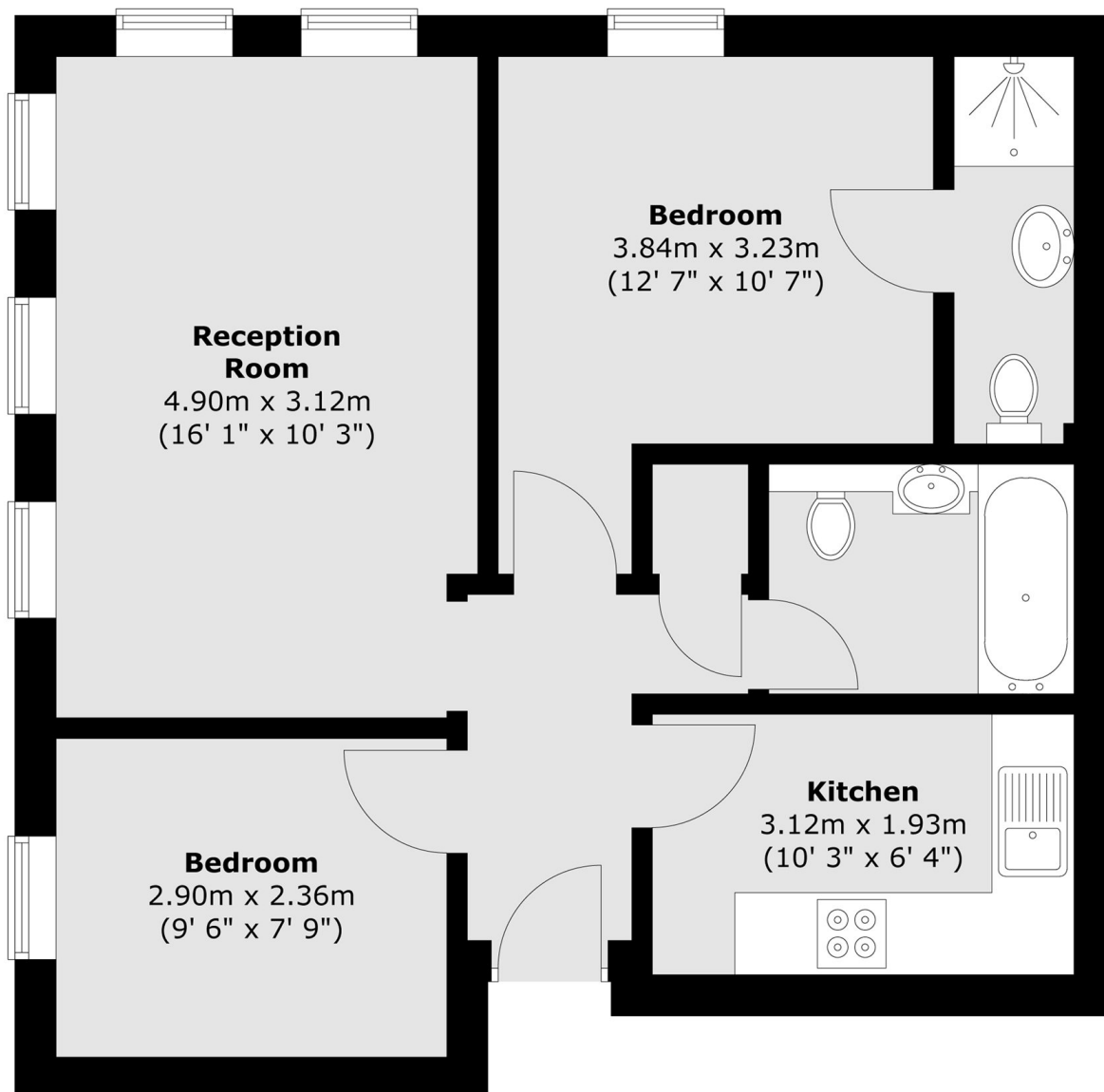
Situated within a sought-after riverside development, this well-presented two-bedroom, two-bathroom apartment offers contemporary living in a desirable waterside setting. The property features a bright and spacious living area, a modern fitted kitchen, and two well-proportioned bedrooms, including a principal bedroom with an en-suite bathroom.

Located within a well-maintained riverside development, residents benefit from a peaceful waterside atmosphere while remaining within easy reach of local amenities, transport links, and green spaces.

Features

- Two Bedrooms
- Two Bathrooms
- Part-Furnished
- Modern Kitchen
- Riverside Development

Sophia Square, London, SE16



Total area (approx.) : 52.9 sq. m (569 sq. ft)