



Waldegrave Road, TW11

£999,950

This immaculately presented four-bedroom Victorian home blends timeless period character with sleek, modern living. The property is located in the heart of Teddington, moments from the High Street and boasts an impressive space throughout in excess of 1,300 sq ft.

Waldegrave Road is a turning off Teddington High Street. Teddington and Strawberry Hill stations are close by along with the River Thames and Bushy Park.

Features

- Four Bedrooms
- Two Bath/Shower Rooms
- Excellent Condition
- Low Maintenance Garden
- Modern Bathroom
- Central Location



Waldegrave Road, TW11

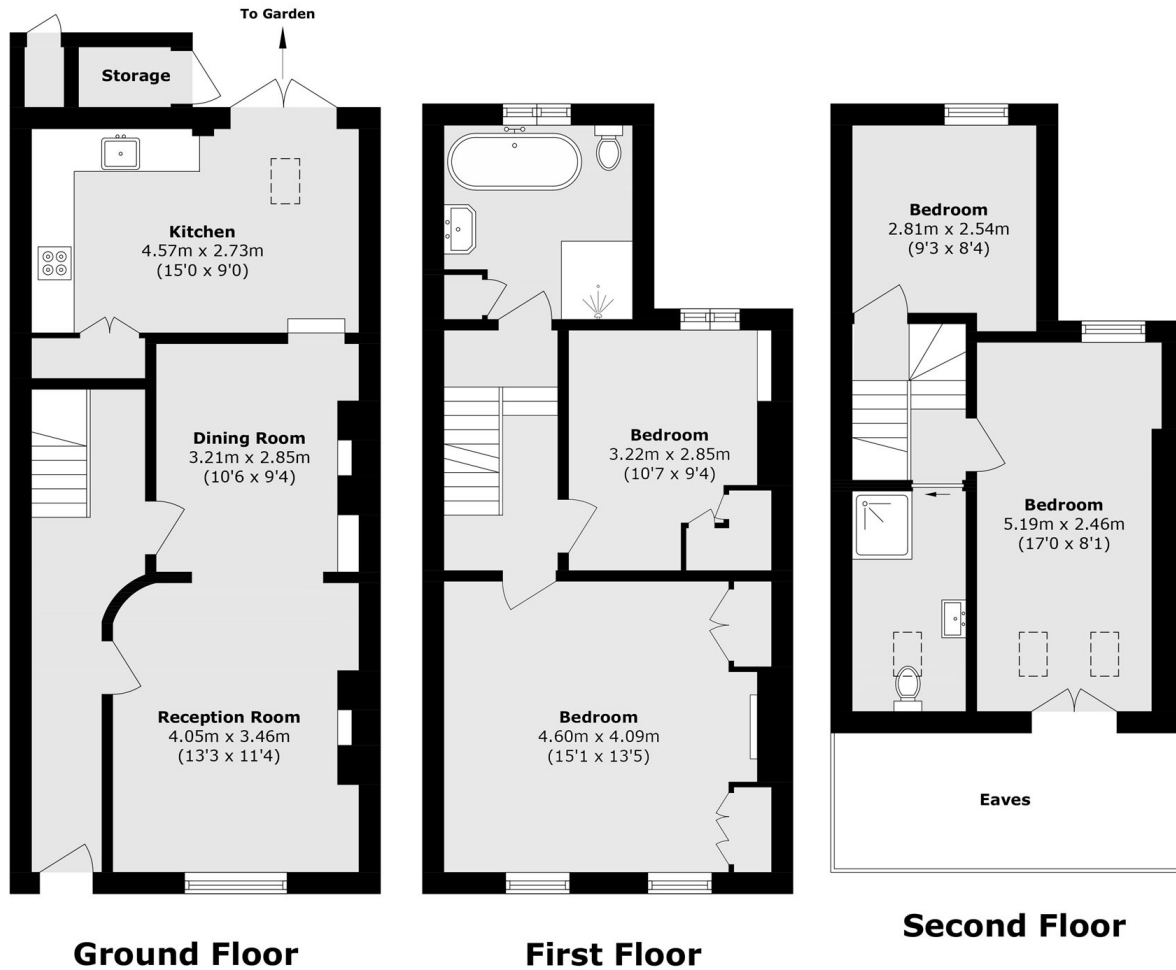
The through reception room is cleverly zoned to create distinct areas for both relaxed lounging and social dining. There is solid wood flooring and the living room features a striking exposed brick feature wall and a traditional open fireplace. The space has high ceilings and plenty of natural light.

Spanning the upper two levels are four generously proportioned, bright bedrooms and a gorgeous modern family bathroom. To the top floor there is an additional shower room.

Stepping outside, the walled rear garden is a hidden gem. Exceptionally secluded and cleverly landscaped with artificial grass requiring minimal maintenance perfect for alfresco dining and entertaining.



Waldegrave Road, Teddington, TW11



Total area (approx.): 121.3 sq. m (1305.7 sq. ft)
Outbuilding Total (approx.): 1.6 sq. m (17.2 sq. ft)
(Excluding Eaves)