



Stockwell Road, SW9

£460,000

Dexters



Stockwell Road, SW9

A well proportioned two bedroom apartment. The property features two generously sized and evenly proportioned double bedrooms, making it ideal for professional sharers, couples, or small families. A bright and spacious living area opens onto a large private balcony/terrace. Further benefits include a lift, ample built-in storage throughout and being sold chain free.

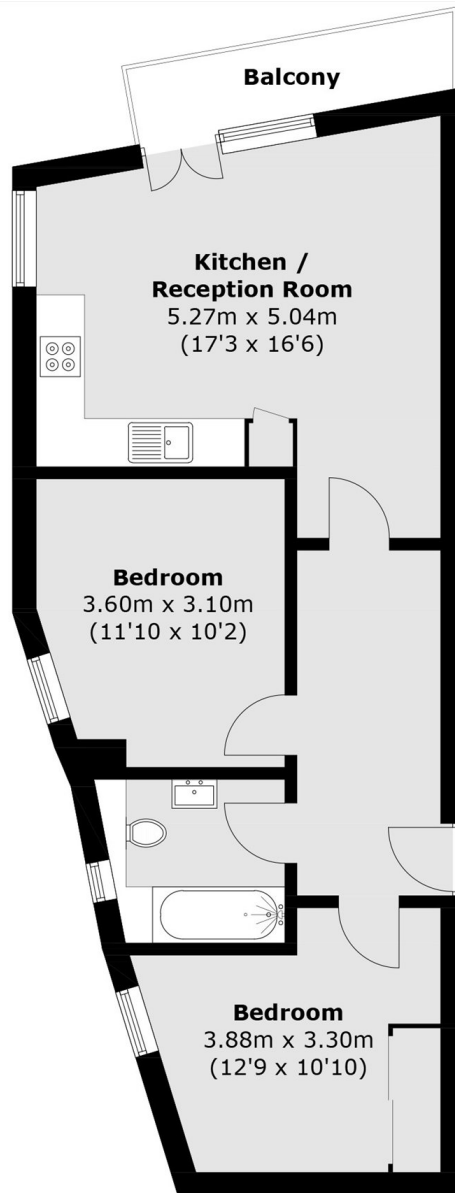
Stockwell Road is ideally positioned just moments from the heart of Brixton, offering excellent access to the area's wide array of shops, restaurants, cafés, and bars. Brixton, Stockwell, and Clapham North stations are all within easy reach, providing convenient transport links via the Victoria and Northern Underground lines.

Features

- Two Bedrooms
- Open Plan
- Balcony/Terrace
- Central Location
- Long Lease
- Lift



Stockwell Road, London, SW9



First Floor

Total area (approx.): 57.4 sq. m (617.8 sq. ft)
Balcony area : 3.8 sq. m (40.9 sq. ft)