





£560,000

To View:

Holland & Odam

Market Place, Somerton

Somerset, TA11 7NB

01458 785100

somerton@hollandandodam.co.uk



4



2



2

Energy  
Rating

F

Council Tax Band E



Services

Mains electricity, gas, water and drainage are connected. Oil fired central heating system and two wood burners.

Local Authority

Somerset Council

03001232224

somerset.gov.uk

Tenure

Freehold

## Directions

Start at Market Place in Somerton, head southeast onto Broad Street. At the mini-roundabout, turn right. Continue to the first T-junction, then turn left onto the B3151. Soon after, take the first right onto the B3153 heading toward Keinton Mandeville. Stay on the B3153 for approximately 3.5 miles. Enter Keinton Mandeville, then turn left onto Barton Road. Follow Barton Road as it bends to the left onto High Ln. From High Road, take a right turn onto Mill Road. Continue down Mill Road as it bends to the right. The property will be on the Left.

## Description

A delightful detached period home, set in a semi-rural position within the popular village of Barton St. David. The property offers four bedrooms, two reception rooms, a master en-suite, front and rear gardens, driveway parking and a garage. EPC Rating F. No onward chain.

The front door opens into a glazed porch and through to the first reception room, which features exposed beams, a staircase with storage beneath, and a striking inglenook fireplace with inset stove. This room links to both the kitchen/breakfast room and the triple-aspect sitting room, where a Blue Lias inglenook with bread oven and wood-burning stove provides a stunning focal point. Bi-fold doors at the rear open directly onto the garden.

The kitchen/breakfast room is fitted with matching wall and base units, offering plenty of storage, plus space for a dining table. Patio doors open onto a sunny front terrace, while a rear window brings in additional light. Adjoining is a utility room with extra units, sink, and space for appliances, together with a downstairs WC.

Upstairs, the landing leads to four bedrooms, three with built-in storage, alongside a family bathroom. The master enjoys an en-suite shower room and pleasant countryside views can be seen from several rooms.

## Location

The property is situated within the village of Barton St David which has local amenities including Church, Public House and playing field. More comprehensive facilities can be found in the neighbouring village of Keinton Mandeville including primary school, public house and post office/stores. The historic town of Glastonbury, famous for its Tor and Abbey Ruins is 6 miles and the Cathedral City of Wells 8.5 miles. Millfield School is on the outskirts of Street and the town offers a wide range of amenities including both indoor and outdoor swimming pools, Strode Theatre, Strode College and a complex of shopping outlets in Clarks Village. Castle Cary main line station (London Paddington) is 7 miles as is the A303 at Podimore.





Outside, a gated driveway from Mill Road provides parking for multiple vehicles and leads to a single garage with power and light. The south-facing front garden is mainly lawn with pathways and mature boundaries, enjoying sunshine throughout the day. To the rear is a private, low-maintenance garden with patio, stone chippings, and well-stocked borders—ideal for outdoor dining. A brick-built wood-fired pizza oven adds to the appeal, with access into the garage from both side and rear.

- No onward chain
- Attractive detached period home in Barton St. David, semi-rural setting
- Four bedrooms, two reception rooms, master with en-suite
- Character features throughout including inglenook fireplaces and beams
- Light kitchen/breakfast room with utility and downstairs WC
- South-facing front garden, private rear garden with patio and pizza oven
- Single Garage

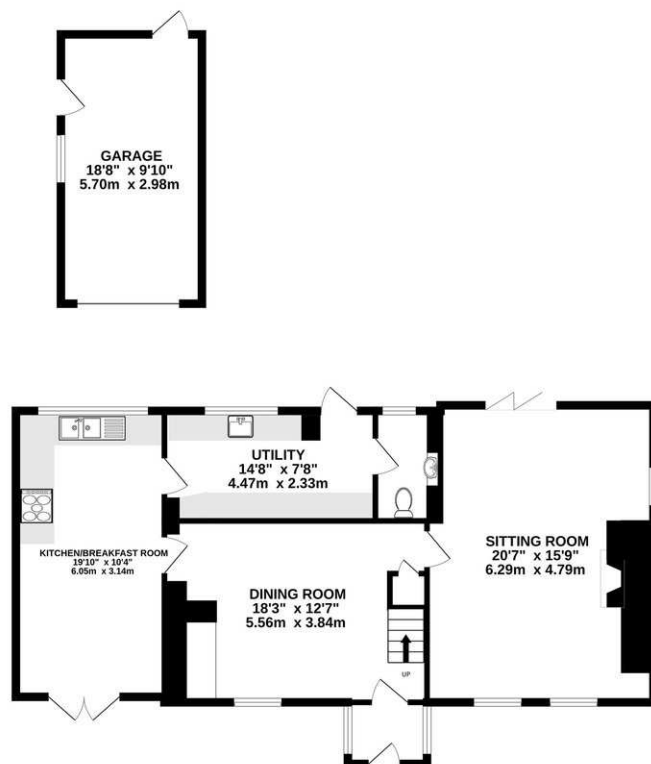


**Agents Note:**

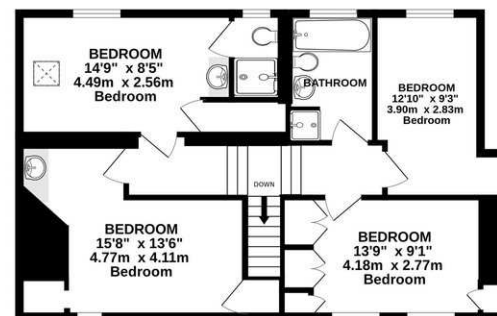
Full planning permission was granted on 07/04/2025, planning reference number 24/00406/ful, on the parcel of land opposite Marshfield House, for the erection of a single story, detached, new build dwelling (self-build).



GROUND FLOOR



1ST FLOOR



Whilst every attempt has been made to ensure the accuracy of the floorplan contained here, measurements of doors, windows, rooms and any other items are approximate and no responsibility is taken for any error, omission or mis-statement. This plan is for illustrative purposes only and should be used as such by any prospective purchaser. The services, systems and appliances shown have not been tested and no guarantee as to their operability or efficiency can be given.  
Made with Metropix ©2025

**RESIDENTIAL LETTINGS :** Holland & Odam offer a comprehensive residential lettings service. Whether you are a landlord or a tenant, please contact any of our offices to discuss your requirements.

**FINANCIAL SERVICES :** Would you like to have the opinion of a fully Independent Financial Adviser who has access to the entire mortgage market place and could help you consider all aspects of financing your proposed purchase? If so, please ring us on 01458 785100 and we can arrange a free consultation for you at a time and a place to suit you with The Levels Financial. \*

**CONSUMER PROTECTION FROM UNFAIR TRADING REGULATIONS 2008 :** The Agent has not tested any apparatus, equipment, fixtures and fittings or services and so cannot verify that they are in working order or fit for the purpose. A Buyer is advised to obtain verification from their Solicitor or Surveyor. References to the Tenure of a Property are based on information supplied by the Seller. The Agent has not had sight of the title documents. A Buyer is advised to obtain verification from their Solicitor. Items shown in photographs are not included unless specifically mentioned within the sales particulars. They may however be available by separate negotiation. Buyers must check the availability of any property and make an appointment to view before embarking on any journey to see a property.

**DATA PROTECTION :** Personal information provided by customers wishing to receive information and/or services from the estate agent and the Property Sharing Experts (of which it is a member) for the purpose of providing services associated with the business of an estate agent but specifically excluding mailing or promotions by a third party. If you do not wish your personal information to be used for any of these purposes, please notify us.

\*YOUR HOME MAY BE REPOSSESSED IF YOU DO NOT KEEP UP REPAYMENTS ON YOUR MORTGAGE OR ANY OTHER DEBT SECURED ON IT. WRITTEN QUOTATIONS ARE AVAILABLE ON REQUEST.