



Guide Price
£550,000

Freehold

4x  2x  2x 

**Wellington Road,
Horsham, West Sussex,
RH12**

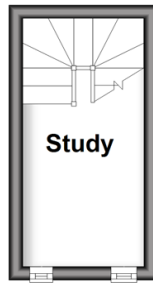
OVER 60?

Secure this property
for up to **59% less!**

cubitt & west
Helping you move forwards

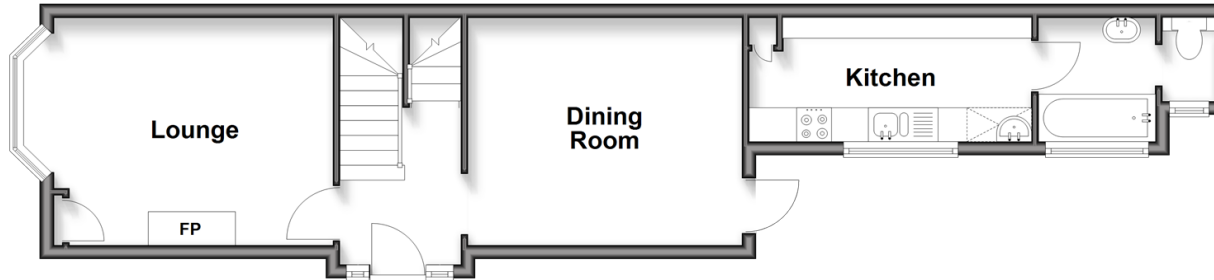
Basement

Approx. 6.3 sq. metres (68.1 sq. feet)



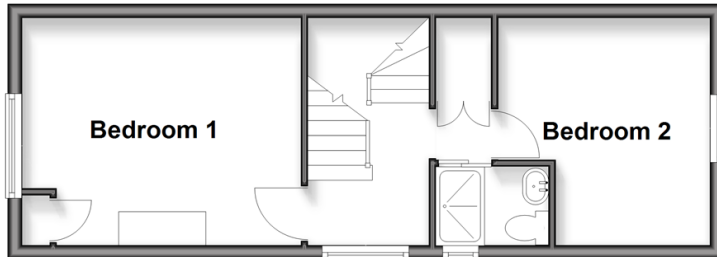
Ground Floor

Approx. 46.0 sq. metres (495.1 sq. feet)



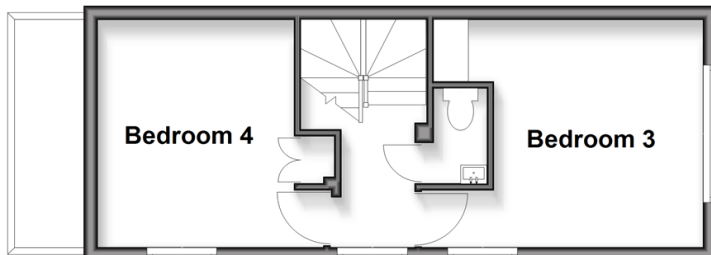
First Floor

Approx. 33.2 sq. metres (357.9 sq. feet)



Second Floor

Approx. 29.6 sq. metres (318.8 sq. feet)
(excluding Eaves)



Accommodation

GROUND FLOOR

Entrance Hall

Dining Room: 15'5 x 10'11 (4.70m x 3.33m)

Lounge: 12'11 x 11'1 (3.94m x 3.38m)

Kitchen: 13'2 x 6'2 (4.02m x 1.88m)

Bathroom: 6'7 x 5'6 (2.01m x 1.68m)

BASEMENT

Cellar : 8'2 x 5'7 (2.49m x 1.70m)

FIRST FLOOR

Landing

Bedroom 1: 13'2 x 10'11 (4.02m x 3.33m)

Bedroom 2: 11'0 x 10'6 (3.36m x 3.20m)

En Suite Shower Room: 5'3 x 3'10 (1.60m x 1.17m)

SECOND FLOOR

Landing

Bedroom 3: 10'10 x 7'11 (3.30m x 2.41m)

Bedroom 4: 10'4 x 10'3 (3.15m x 3.13m)

Separate Toilet

OUTSIDE

Front & Rear Garden



Main features

- Prime location with The Carfax, train station and Horsham Park just a few moments walk away
- Beautifully presented and lovingly restored
- With no onward chain the property is ready to move into
- A modern, beautiful and practical kitchen, bathroom and shower room
- A clever use of space to create valuable storage areas throughout

Nearest Schools

Primary Schools: St Mary's CofE (Aided) Primary 0.6 miles, Arunside School, Horsham 1.1 miles, St John's Catholic Primary 1.1 miles
Secondary Schools: Millais School 1.4 miles, Tanbridge House School 1.5 miles, Forest School, The 1.6 miles

Transport Information

Train Stations: Horsham 0.7 miles, Littlehaven 2.3 miles, Christs Hospital 3.1 miles

Address

Wellington Road, Horsham, West Sussex, RH12

Directions

For directions to this property please contact us.



cubitt&west
Helping you move forwards

Call Horsham Branch 01403 269268 ■ cubittandwest.co.uk



■ Through a Homewise Home For Life Plan people aged 60+ can secure this property for up to 59% less, by purchasing a Lifetime Lease



20916231/20260407/EAS/CB