



*jordan fishwick*

Kinder Road Hayfield High Peak



## Kinder Road Hayfield High Peak SK22 2LE

£375,000



### The Property

Quite Simply Stunning! Refurbished throughout to a very high standard this stone end terrace property is immaculately presented. Brand new kitchen, bathroom, utility room as well as a comprehensive range of remedial work, lovely gardens and far reaching open views to the rear. Briefly comprising; sitting room and living room to the ground floor, lower ground floor; dining kitchen and utility room. To the first floor there are two double bedrooms and bathroom. Externally the property has potential off road parking to the front and a delightful rear garden with open views a garden room. A true turn key property in the ever popular village of Hayfield with no onward chain.




- Beautifully Refurbished from Top to Bottom to a High Standard
- Brand New Modern Dining Kitchen with Utility Room
- Living Room plus Sitting Room
- Two Double Bedrooms and Brand New Bathroom
- Stunning Open Views to Rear
- Lovely Garden with Garden Room
- Potential Driveway Parking to Front
- Idyllic Location in Popular Hayfield Village

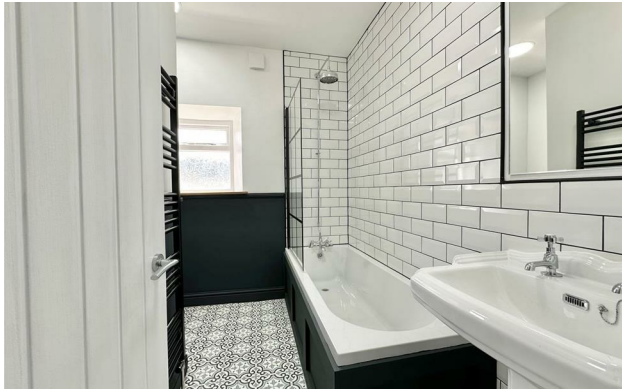
**Postcode** SK22 2LE

**EPC Rating**

**Local Authority** High Peak

**Council Tax** B

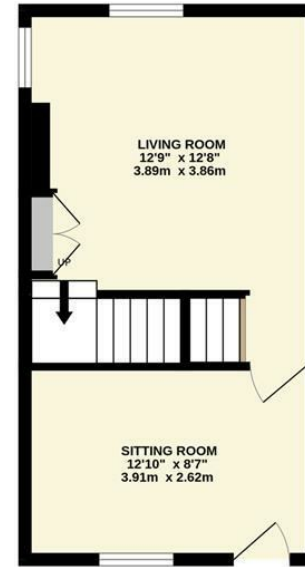
Energy Efficiency Rating		
	Current	Potential
Very energy efficient - lower running costs		
(92 plus) <b>A</b>		
(81-91) <b>B</b>		
(69-80) <b>C</b>		
(55-68) <b>D</b>		
(39-54) <b>E</b>		
(21-38) <b>F</b>		
(1-20) <b>G</b>		
Not energy efficient - higher running costs		
<b>England &amp; Wales</b>	EU Directive 2002/91/EC 	



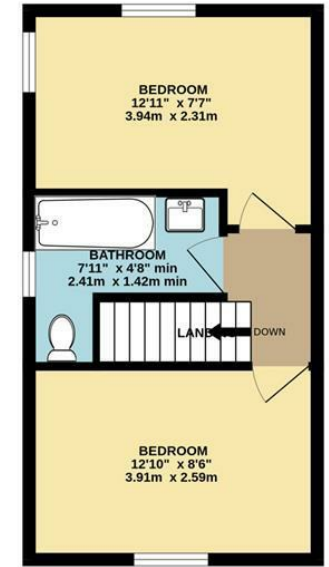
LOWER GROUND FLOOR



GROUND FLOOR



1ST FLOOR



Whilst every attempt has been made to ensure the accuracy of the floorplan contained here, measurements of doors, windows, rooms and any other items are approximate and no responsibility is taken for any error, omission or mis-statement. This plan is for illustrative purposes only and should be used as such by any prospective purchaser. The services, systems and appliances shown have not been tested and no guarantee as to their operability or efficiency can be given.  
 Made with Metropix ©2026



These particulars are believed to be accurate but they are not guaranteed and do not form a contract. Neither Jordan Fishwick nor the vendor or lessor accept any responsibility in respect of these particulars, which are not intended to be statements or representations of fact and any intending purchaser or lessee must satisfy himself by inspection or otherwise as to the correctness of each of the statements contained in these particulars. Any floorplans on this brochure are for illustrative purposes only and are not necessarily to scale.

Offices at: Chorlton, Didsbury, Disley, Hale, Glossop, Macclesfield, Manchester Deansgate, Manchester Whitworth Street, New Mills, Sale, Wilmslow and Withington

14 Market St, Disley, Cheshire, Stockport SK12 2AA

01663 767878

disley@jordanfishwick.co.uk

www.jordanfishwick.co.uk