



## Monck Street, SW1P

£623 Per week

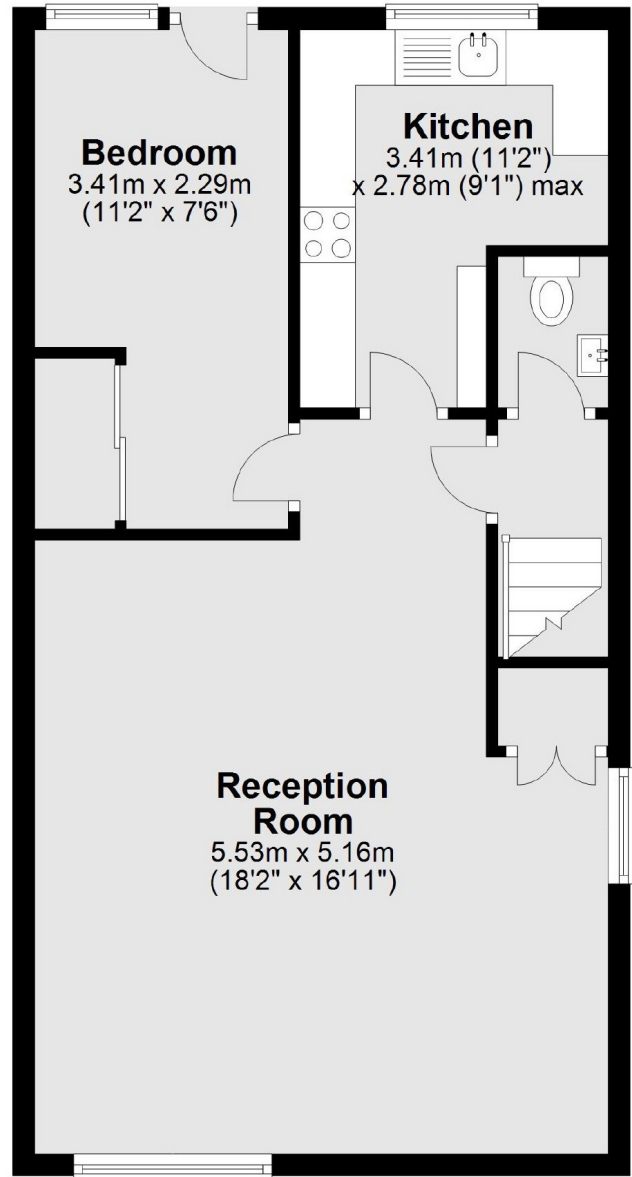
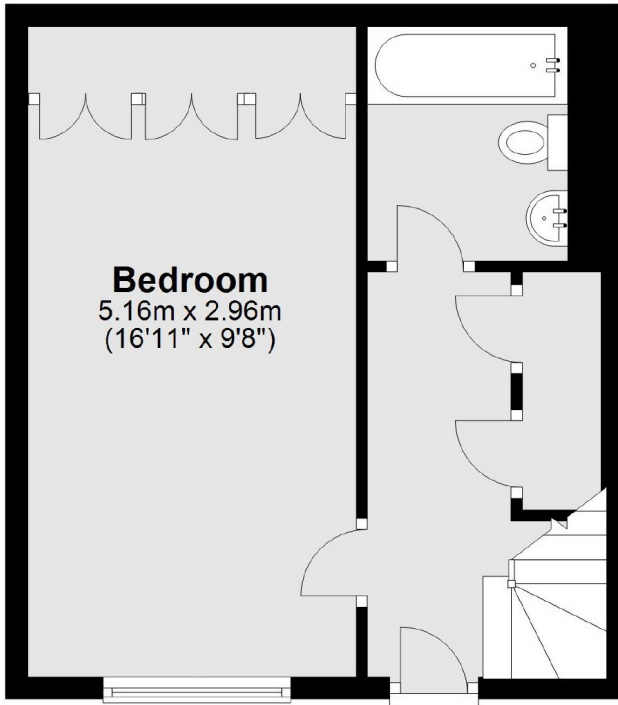
A spacious two double bedroom split level apartment in Westminster. Large reception room with wooden floors, separate kitchen, two double bedrooms, family bathroom with shower over bath and guest wash closet. Balcony access.

Monck Street is well located near Westminster and the Home Office. There are many local shops close by, and an abundance of cafés and eateries such as Pret, Starbucks and Ravello. The closest stations are St James's Park, Westminster and Victoria.

### Features

- Two Double Bedrooms
- Split Level Apartment
- Wood Floors In Reception
- Separate Kitchen
- Top Floor Apartment
- Balcony

# Monck Street, London, SW1P



Total area: approx. 82.6 sq. metres (889.3 sq. feet)