



1 Graham Avenue, Upton

Offers Over **£170,000**



1 Graham Avenue

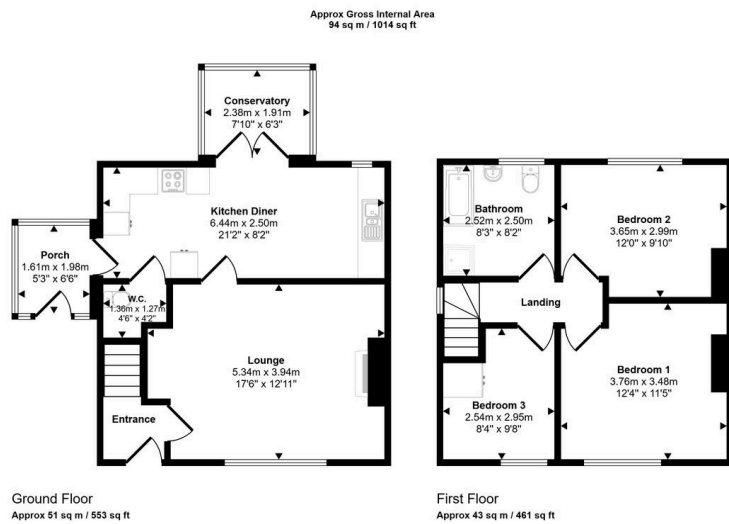
Upton, Pontefract

Offered CHAIN FREE is this three-bedroom semi-detached home with driveway, large garage and conservatory, offering excellent potential for buyers looking to update and add value. Call today to view.
Council Tax band: A

Tenure: Freehold

- Driveway and Garage
- Porch and W.C
- Chain Free Sale
- Conservatory
- Kitchen/ Dining Room
- 4 Piece Bathroom Suite
- Modern bathroom with walk-in shower and bath-tub
- Decorative fireplace
- Private entrance
- Paved driveway





Whilst every attempt has been made to ensure the accuracy of the floor plan contained here, measurements of doors, windows, rooms and any other items are approximate and no responsibility is taken for any error, omission, or mis-statement. The measurements should not be relied upon for valuation, transaction and/or funding purposes. This plan is for illustrative purposes only and should be used as such by any prospective purchaser or tenant.



Aspire Estates

Aspire Properties, Wira Business Park Ring Road - LS16 6EB

0113 8875079

estatesales@aspirepropertygroup.co.uk

www.aspirepropertygroup.co.uk/