



Rochester Road, Kentish Town

1 Bed Furnished Flat

£1,400 pcm + security  
deposit





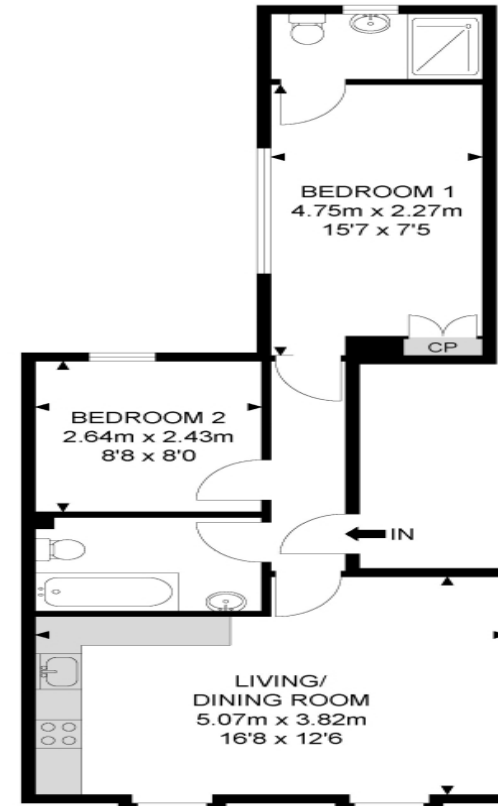
- Flat
- 2 Receptions
- Energy Rating : C
- Dish Washer
- Separate WC
- Shower
- 1 Bed
- 1 Bathroom
- Council Tax Band D
- Washing Machine
- Furnished

Delightful 1/2 bedroom flat newly refurbished to high specifications. Easy reach of Camden Town, Kentish Town and Camden Road stations, with direct links into the City and West End and overground network.



Energy Efficiency Rating		Environmental Impact (CO <sub>2</sub> ) Rating	
	Current	Potential	
<i>Very energy efficient - lower running costs</i>			
(92-100) <b>A</b>			
(81-91) <b>B</b>			
(69-80) <b>C</b>	71	71	
(55-68) <b>D</b>			
(39-54) <b>E</b>			
(21-38) <b>F</b>			
(1-20) <b>G</b>			
<i>Not energy efficient - higher running costs</i>			
England	EU Directive 2002/91/EC		
<i>Very environmentally friendly - lower CO<sub>2</sub> emissions</i>			
(92-100) <b>A</b>			
(81-91) <b>B</b>			
(69-80) <b>C</b>	74	74	
(55-68) <b>D</b>			
(39-54) <b>E</b>			
(21-38) <b>F</b>			
(1-20) <b>G</b>			
<i>Not environmentally friendly - higher CO<sub>2</sub> emissions</i>			
England	EU Directive 2002/91/EC		

## Rochester Road



1st Floor

SPACE PHOTO

APPROX. GROSS INTERNAL FLOOR AREA 494.06 SQ FT / 45.90 SQM

Whilst every attempt has been made to ensure the accuracy of the floor plan contained here, measurements of doors, windows, rooms and any other items are approximated and no responsibility is taken for any error, omission or mis-statement. This plan is for illustrative purposes only and should be used as such by any prospective purchaser. The service, system and appliances shown have not been tested and no guarantee as to their operability or efficiency can be given.

© SpacePhoto

Photography and Floor Plan



528-530 Hornsey Road, Archway  
London, N19 3QN

telephone : 020 7272 9988

email : info@aristonproperty.co.uk

aristonproperty.co.uk

THE PROPERTY MISDESCRIPTIONS ACT 1991: Any areas, measurements or distances are approximate. Land measurements are provided by the vendor and buyers are advised to obtain verification from their solicitor. The text, photographs and plans are for guidance only and are not necessarily comprehensive. Items shown in the property photographs are not included unless specifically mentioned within the sales particulars although they may be available by separate negotiation. Ariston Property cannot verify that the fixtures and fittings, equipment or services are in working order or fit for the purpose and buyers are advised to obtain verification from their solicitor. The tenure of a property is based upon information supplied by the seller and buyers are advised to obtain verification from their solicitor.