

25 Jubilee Road, Walmer Bridge

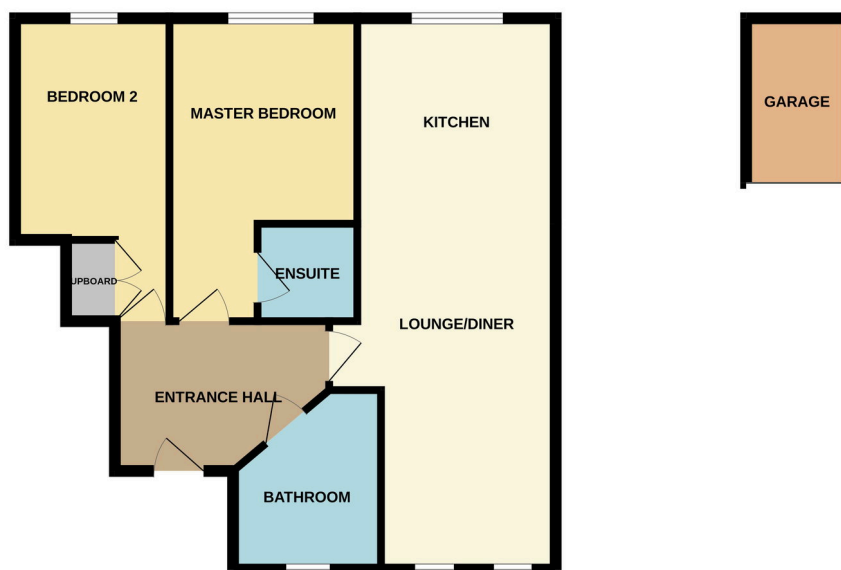
£120,000

🛏 2 🚪 1 🚗 1



- Master with en-suite
- Ground floor apartment
- Close to local shops and amenities
- Garage and additional private Parking space
- Situated in a quiet cul-de-sac
- Viewing highly recommended
-
-

GROUND FLOOR



Whilst every attempt has been made to ensure the accuracy of the floorplan contained here, measurements of doors, windows, rooms and any other items are approximate and no responsibility is taken for any error, omission or mis-statement. This plan is for illustrative purposes only and should be used as such by any prospective purchaser. The services, systems and appliances shown have not been tested and no guarantee as to their operability or efficiency can be given.
Made with Metropac ©2020

Beautifully presented two bedroom ground floor apartment situated in a quiet cul-de-sac within the popular Jubilee Road development in Walmer Bridge. A short walk from local amenities and served by excellent schools and transport links, this home is a must see and viewing is highly recommended. The modern living arrangement briefly comprises of an entrance hallway, open plan lounge/diner/kitchen, bathroom and two bedrooms including a master with en-suite. Externally to the ground floor is a garage and private off-road parking space with communal

garden space. This property is Leasehold. Please quote JB0397 when calling to arrange a viewing