



Tidemill Square, SE10

£675,000

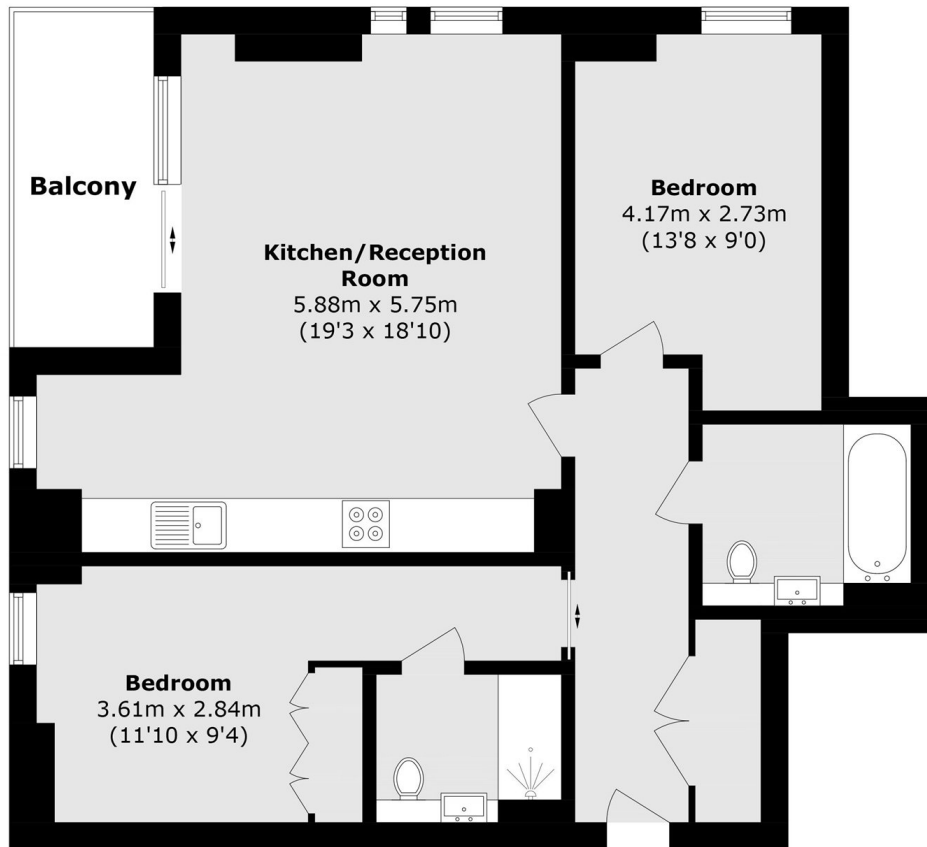
This luxurious two double bedroom two bathroom apartment with amazing city views. Situated in this prestigious building and benefitting from a private balcony, underfloor heating as well as amenities such as a gym, concierge, cinema room and communal roof terrace. The property is also offered to the market chain free.

Greenwich Peninsula is a modern community that has been designed with the residents in mind offering a range of amenities, which include North Greenwich Station for direct connections to Canary Wharf, London Bridge and The West

Features

- EWS1 Compliant
- 24 Hour Concierge
- Residents Gym & Cinema
- 23rd Floor Residents Terrace
- Central Park Nearby
- Underfloor Heating

Tidemill Square, London, SE10



Total area (approx.): 70.2 sq. m (755.6 sq. ft)
Balcony area (approx.): 6.5 sq. m (69.9 sq. ft)