



OFFERS OVER

£289,000

Greystone Gardens
Strathaven, ML10 6FT

PROPERTY SUMMARY

CLOSING DATE WEDNESDAY 1ST APRIL AT 12PM Nicely positioned upon a generous corner plot is this immaculately presented, three-bedroom, detached family home. Located within a lovely, small, family friendly estate, bright and spacious accommodation, and pleasant, well-maintained gardens, the property is sure to appeal to a broad section of buyers.

The well-appointed layout of apartments comprises; welcoming reception hallway, stunning lounge with dining area to rear, bay window, and attractive focal fireplace set within media wall, tasteful, modern fitted dining size kitchen with range cooker, dish washer, walk-in pantry cupboard, and French doors leading to patio ideal outdoor entertaining, and utility room with integrated fridge/freezer, and side access.

Accessed via a light and airy landing are three well-proportioned bedrooms all of which benefit from fitted storage. The master bedroom has the luxury of its own modern, en-suite shower room with useful vanity storage. The first-floor accommodation is completed by a modern, three-piece, family bathroom with over-bath shower, and hall storage.

3



2



2









LOCAL AUTHORITY

South Lanarkshire

TENURE

Freehold

COUNCIL TAX BAND

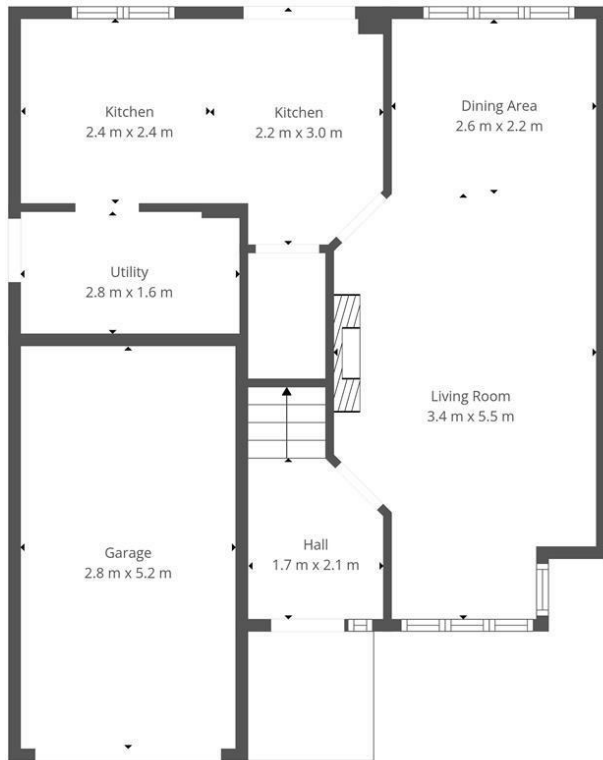
F

VIEWINGS

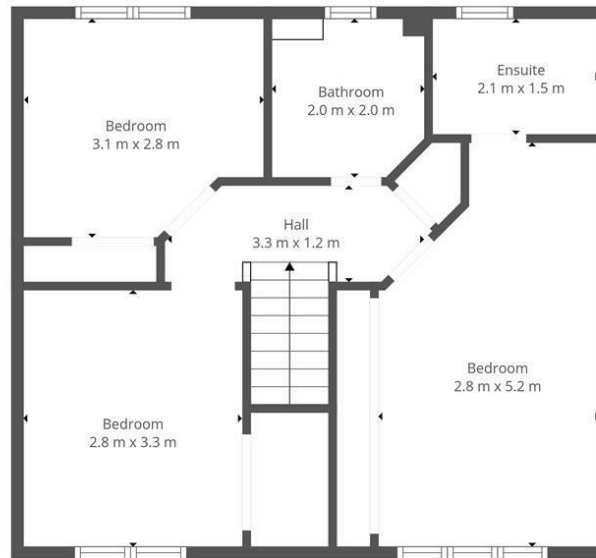
By prior appointment only

Energy Efficiency Rating		Current	Potential
<i>Very energy efficient - lower running costs</i>			
(92 plus) A			
(81-91) B			
(69-80) C			
(55-68) D			
(39-54) E			
(21-38) F			
(1-20) G			
<i>Not energy efficient - higher running costs</i>			
		74	80
Scotland		EU Directive 2002/91/EC	

Agents Note: Whilst every care has been taken to prepare these particulars, they are for guidance purposes only. All measurements are approximate and are for general guidance purposes only and whilst every care has been taken to ensure their accuracy, they should not be relied upon and potential buyers/tenants are advised to recheck the measurements



Ground Floor



1st Floor



This Floorplan Is Intended To Give An Indication Of The Layout Only.



OFFICE ADDRESS
9 Townhead Street
Strathaven
ML10 6AB

OFFICE DETAILS
01357 510088
judithmcgill@cruive-
estateagents.co.uk