



Georges Road, N7

£550,000

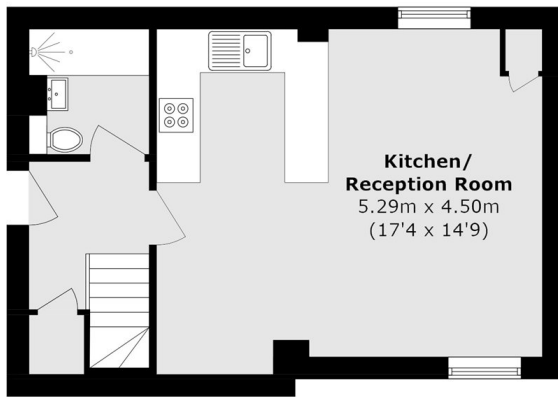
OIEO £550,000 - A two bedroom apartment set over two levels within a school conversion. The property has an open plan kitchen/reception room with double height ceilings and wooden floors, as well as fitted storage. It is also being sold with a share of the freehold.

Georges Road is ideally located for ease of access to the City with direct links to Moorgate via Drayton Park station, the West End via Holloway Road and Caledonian Road Underground stations both 5 a minute walk.

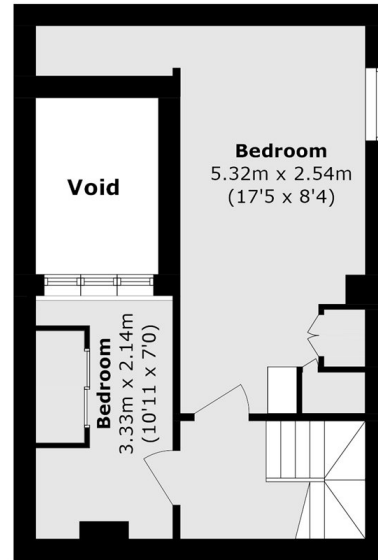
Features

- Open Plan
- Two Bedrooms
- Wooden Floors
- Double Height Ceiling
- School Conversion
- Share of Freehold

Georges Road, London, N7



Ground Floor



First Floor

Total Area (approx.): 58.3 sq. m (627.5 sq. ft)
(Excluding Void)