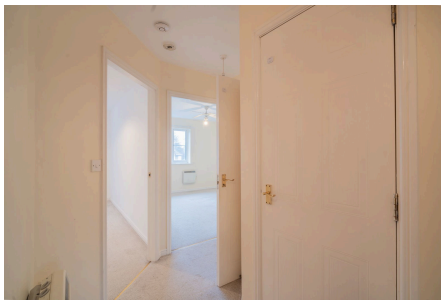
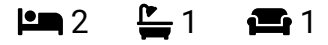


Haunch Lane, Birmingham, B13 0PS

Offers Over £125,000

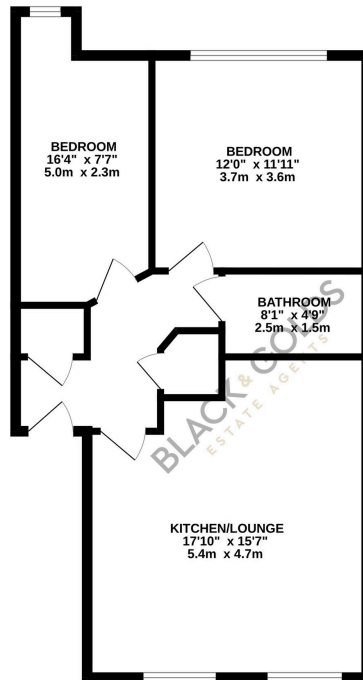


Modern Two Bedroom Apartment in Prime Kings Heath Location – Ideal for First-Time Buyers or Investors

Key Features

- A Modern Top Floor Apartment
- Gated Parking
- Bathroom
- No Chain
- Open Plan Lounge / Kitchen
- Two Bedrooms
- Excellent Buy to Let Investment with Potential Yield of 7%
- Great Location Close to all Amenities and Excellent Transport Links

GROUND FLOOR
630 sq.ft. (58.5 sq.m.) approx.



TOTAL FLOOR AREA - 630 sq.ft. (58.5 sq.m.) approx.

Whilst every attempt has been made to ensure the accuracy of the floorplan contained here, measurements of doors, windows, rooms and any other items are approximate and no responsibility is taken for any error, omission or mis-statement. This plan is for illustrative purposes only and should be used as such by any prospective purchaser. The services, systems and appliances shown have not been tested and no guarantee as to their operability or efficiency can be given.
Made with Metropix 02025