



Price

£325,000

**Share of
Freehold**

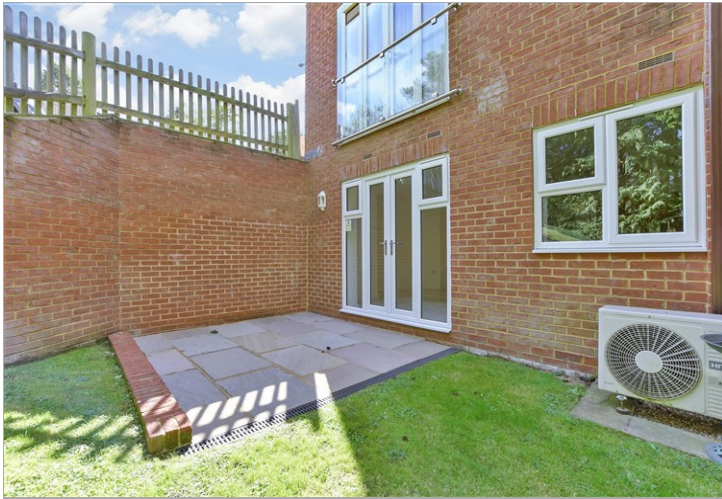
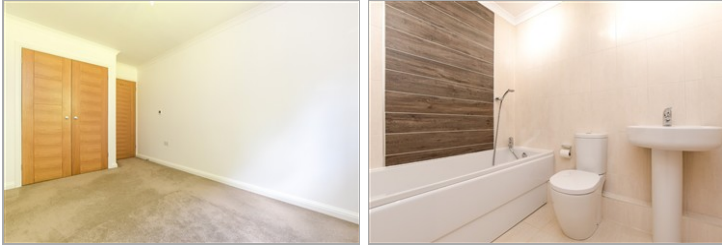
2x  2x  1x 

**Ambleside, Croydon
Road, Caterham, Surrey,
CR3**

OVER 60?

Secure this property
for up to **59% less!**

cubitt&west
Helping you move forwards



Main features

- Large chain free ground floor flat with private patio
- Built in wardrobes to both bedrooms & ensuite to bedroom one
- Allocated parking within a secure gated entrance
- Underfloor heating throughout & Quartz stone work tops in the kitchen

Accommodation

GROUND FLOOR

Entrance Hallway

Lounge/Dining Area: 14'9 x 13'0 (4.50m x 3.97m)

Kitchen Area: 11'8 x 9'10 (3.56m x 3.00m)

Bedroom 1: 17'5 x 11'6 (5.31m x 3.51m)

En suite Shower

Bedroom 2: 14'7 x 8'4 (4.45m x 2.54m)

Bathroom

OUTSIDE

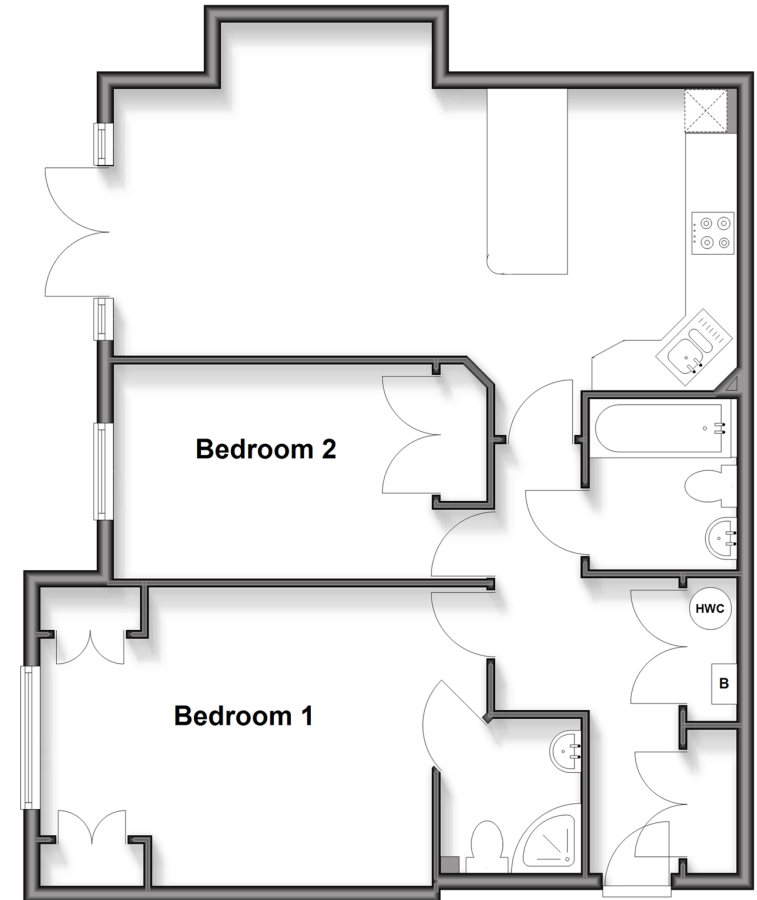
1 x allocated parking space

Private patio

Communal garden

Ground Floor

Approx. 74.9 sq. metres (805.9 sq. feet)



Call Caterham - 01883 331000 ■ cubittandwest.co.uk

- Legal advice should be taken to verify fixtures/fittings, planning, alterations and/or lease details
- Appliances & services are untested, dimensions are approximate and floor plans are not to scale
- Through a Homewise Home For Life Plan people aged 60+ can secure this property for up to 50% less, by purchasing a Lifetime Lease.



24408251/20251028/LP/LP