



## Willow Walk, £180,000

- Driveway!
- Well Maintained Throughout!
- Fitted kitchen and shower room
- Ideal downsize
- Lawned gardens
- EPC Rating: C
- Council Tax Band: C



 2  1  1

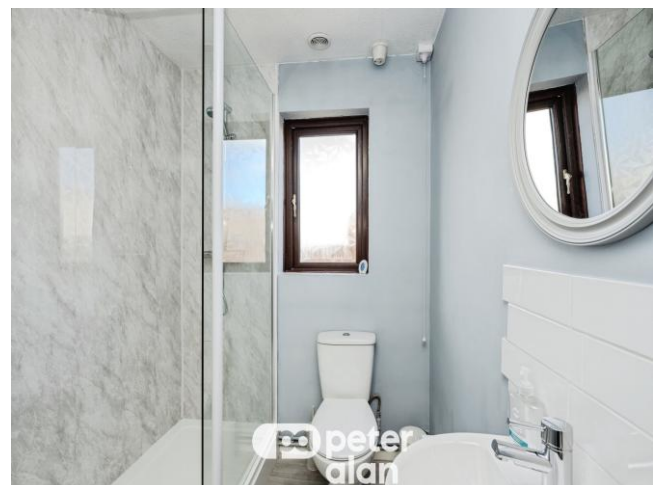
 **peter  
alan**

01639 635115  
neath@peteralan.co.uk



## About the property

A Lovingly Maintained and Well Presented ideal down-size or first time purchase, nestled into a quaint side street within Cimla, Neath now available for sale in a sought-after residential area! With sizable gardens to the front and rear alongside the luxury of off-street parking via the Driveway!





## Accommodation

### Lounge

13' 9" x 12' ( 4.19m x 3.66m )

### Kitchen

11' 4" x 10' 7" ( 3.45m x 3.23m )

### Bedroom One

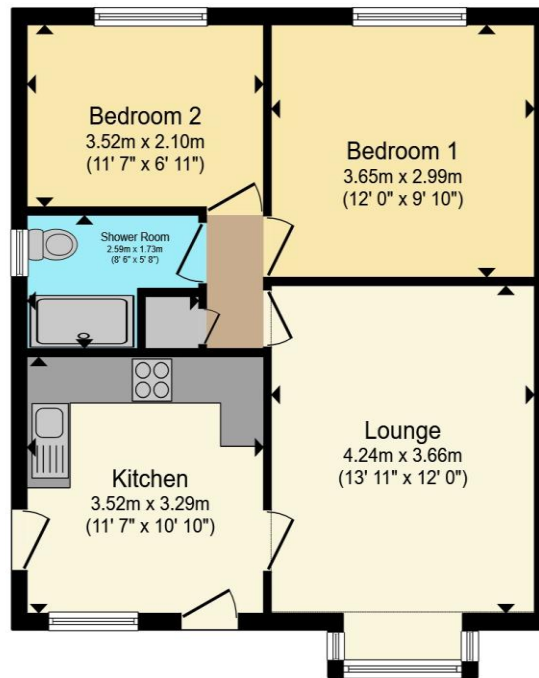
11' 9" x 9' 7" ( 3.58m x 2.92m )

### Bedroom Two

11' 5" x 6' 9" ( 3.48m x 2.06m )

### Bathroom

## Floorplan



Total floor area 54.7 m<sup>2</sup> (588 sq.ft.) approx

This floor plan is for illustrative purposes only. It is not drawn to scale. Any measurements, floor areas (including any total floor area), openings and orientation are approximate. No details are guaranteed, they cannot be relied upon for any purpose and they do not form part of any agreement. No liability is taken for any error, omission or misstatement. A party must rely upon its own inspection(s). Powered by [www.propertybox.io](http://www.propertybox.io)

## Important Information

Note while we endeavour to make our sales details accurate and reliable, if there is any point which is of particular interest to you, please contact the office and we will be pleased to confirm the position for you. We have not personally tested any apparatus, equipment, fixtures, fittings or services and cannot verify they are in working order or fit for their purposes. Nothing in these particulars is intended to indicate that carpets or curtains, furnishings or fittings, electrical goods (whether wired or not). Gas fires or light fittings or any other fixtures not expressly included form part of the property offered for sale. This computer generated Floorplan, if applicable, is intended as a general guide to the layout and design of the property. It is not to scale and should not be relied upon for dimensions. Tenure: We cannot confirm the tenure of the property as we have not had access to the legal documents. The buyer is advised to obtain verification from their solicitor or surveyor.