

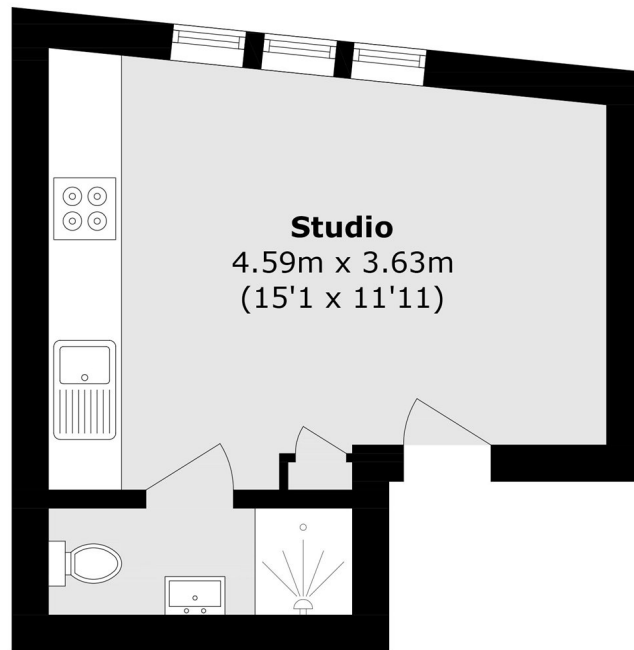


## The Mall, W5

£347 pw (1,500 pcm)

This charming second floor studio apartment is located in the heart of Ealing. The property has wooden flooring throughout and features a smart modern kitchen, double glazing and a contemporary en suite shower room.

The Mall is conveniently located less than half a mile from Ealing Broadway Station and is within easy reach of a wide range of shops, restaurants and local amenities.



## **Second Floor**

Total area (approx.): 17.4 sq. m (187.2 sq. ft)

Robertson Smith & Kempson Ealing Lettings  
1 The Broadway,  
London, W5 2NT  
020 8840 7885  
[ealinglettings@robertsonsmithandkempson.co.uk](mailto:ealinglettings@robertsonsmithandkempson.co.uk)

Energy Rating: C. We aim to make our particulars both accurate and reliable. However they are not guaranteed; nor do they form part of an offer or contract. If you require clarification on any points then please contact us, especially if you're traveling some distance to view. Please note that appliances and heating systems have not been tested and therefore no warranties can be given as to their good working order.