



Hansel Road, NW6

£600,000

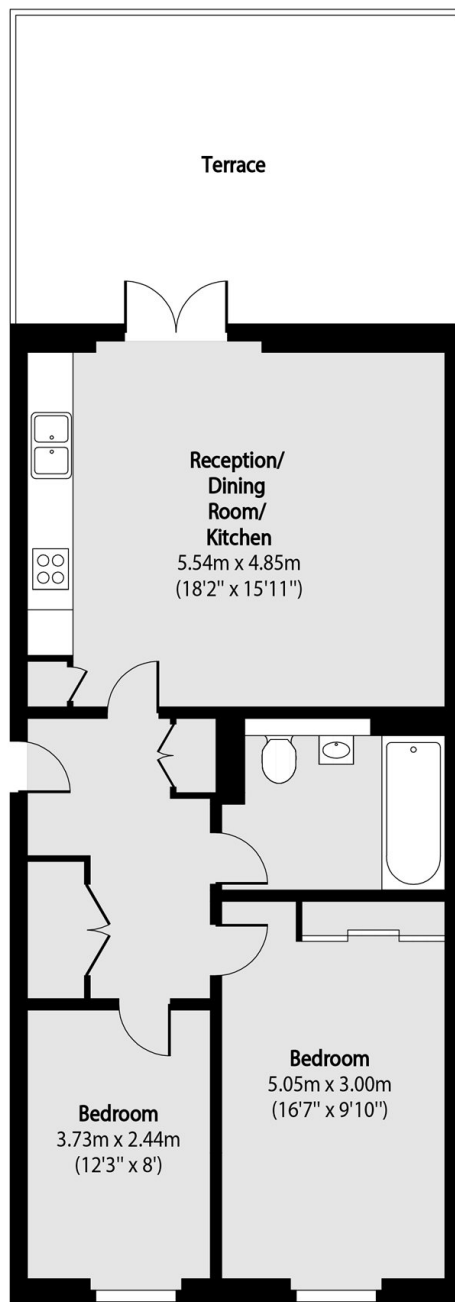
A well-presented ground floor flat set in a modern purpose-built block. Bright and spacious with high specification interiors, this property features two double bedrooms, one bathroom and a private terrace accessible through the open plan reception/kitchen. The property also offers secure underground parking with allocated space and access to the shared garden.

Ideal location next to Paddington Recreation ground, offering both the tranquillity of Maida Vale and Little Venice, and the vibrant energy of Kilburn Park and Queens Park.

Features

- Lift & Key Fob Access
- Ground Floor Flat
- Open Plan Reception/Kitchen
- Private Terrace
- Modern Development
- Communal Gardens

Hansel Road, London, NW6



Total area (approx): 69.58 sq m (749 sq. ft)

Terrace total area (approx): 24.15 sq m (260 sq. ft)