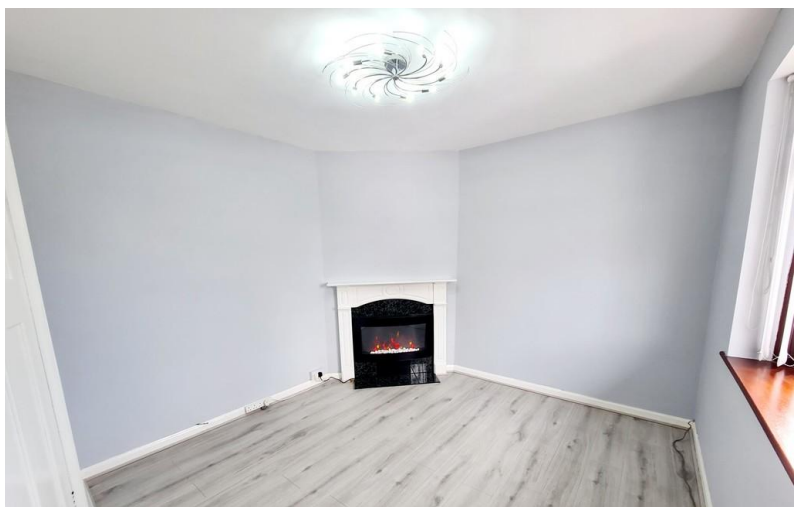


TO LET



Machin Crescent, Newcastle

3 Bedrooms, 1 Bathroom, Semi-Detached House

£950 pcm



Machin Crescent, Newcastle

Semi-Detached House,
3 bedroom, 1 bathroom

£950 pcm

Date available: 14th February 2026

Deposit: £1,096

Unfurnished

Council Tax band: B

- Semi detached house
- Garden & Patio
- 3 Bedrooms and bathroom
- Lounge and kitchen
- Parking to front
- Council tax band B
- Outhouse

Martin & Co are pleased to bring to the rental market this exceptional 3 bedroom semi-detached home in the popular residential area of Bradwell. The property is well placed for access to local shops, schools and amenities as well as being a short drive to the A34, A500 and M6. Downstairs the property briefly comprises of a lounge, kitchen diner and separate utility/pantry cupboard.

To the first floor there are two double bedrooms, a single bedroom and bathroom with three piece suite and over bath shower.

Externally there is a well maintained garden mainly laid to lawn and patio area with an additional bonus of an outhouse with laminate flooring. To the front there is a driveway big enough for two cars.

Energy Efficiency Rating

	Current	Potential
Very energy efficient - lower running costs		
(92-100) A		
(81-91) B		86
(69-80) C		
(55-68) D	68	
(39-54) E		



Martin & Co Stoke on Trent

12 Albion Street • Stoke-On-Trent • ST1 1QH

T: 01782 262880 • E: stokeontrent@martinco.com <http://www.martinco.com>

01782 262880



Accuracy: References to the Tenure of a Property are based on information supplied by the Seller. The Agent has not had sight of the title documents. A Buyer is advised to obtain verification from their Solicitor. Items shown in photographs including but not limited to carpets, fixtures and fittings are not included unless specifically mentioned within the sales particulars. They may however be available by separate negotiation. Buyers must check the availability of any property and make an appointment to view before embarking on any journey to see a property. No person in the employment of the agent has any authority to make any representation about the property, and accordingly any information given is entirely without responsibility on the part of the agents, sellers(s) or lessors(s). Any property particulars are not an offer or contract, nor for m part of one. **Sonic / laser Tape:** Measurements taken using a sonic / laser tape measure may be subject to a small margin of error. **All Measurements:** All Measurements are Approximate. **Services Not tested:** The Agent has not tested any apparatus, equipment, fixtures and fittings or services and so cannot verify that they are in working order or fit for the purpose. A Buyer is advised to obtain verification from their Solicitor or Surveyor.