

## Perrers Road, W6

£450,000

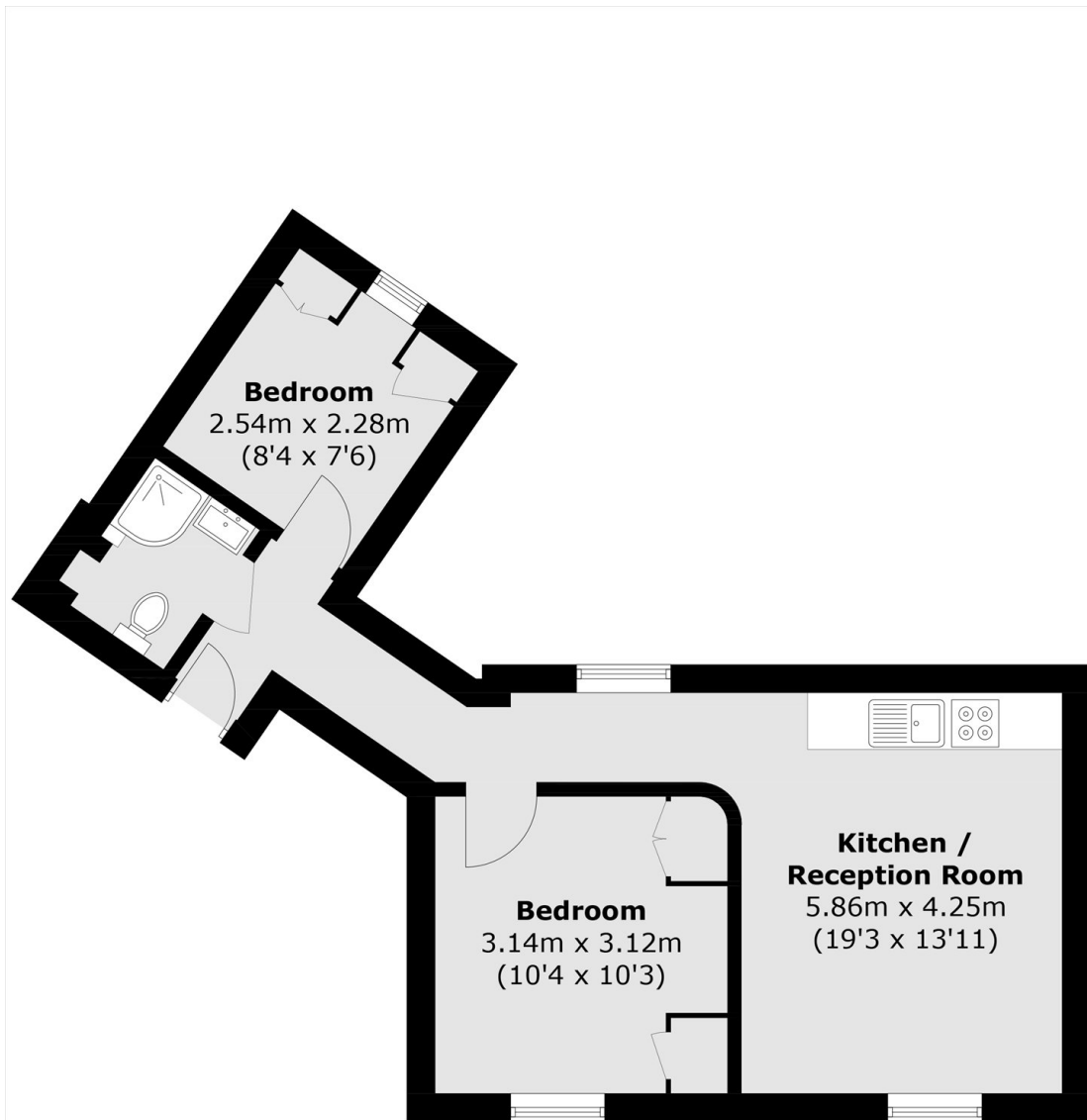
A wonderful two bedroom period conversion in the heart of Brackbury Village.

Situated in the heart of the popular Brackbury Village, the property is located close to the amenities of the village, as well as easy access to the green and open spaces of Ravenscourt Park and transport links and shopping facilities of both Hammersmith and Ravenscourt Park.

### Features

- Two Bedrooms
- Share of Freehold
- Period Conversion
- Natural Light
- Brackbury Village
- No Chain

# Perrers Road, London, W6



Total area (approx.): 40.2 sq. m (432.7 sq. ft)