

The Whitehouse

BURY & BOLTON ROAD





Tucked away in Three Arrows, rediscover your inner balance at The Whitehouse, a hidden gem of a home, privately set back from Bolton and Bury Road.

Stylish Arrival

Nestled behind an attractive wrought iron gated entrance, park up on the block paved driveway where there is plenty of space for several cars alongside a garage. Mature, beautifully maintained gravel borders with established trees and shrubs add landscaping, providing a place to sit and watch the birds, with country vistas to the front beyond the road.

Airy and bright, the vaulted porch invites the outdoors in through large windows, providing a cheerful transition between indoors and out, tiled underfoot for muddy shoes.

Light is drawn through the inner door, into the entrance hall beyond, where contemporary tones of soft grey and white create a calm and soothing central space.





Family Spaces

Rest and relax in the lounge to the right, where wood-laminate flooring flows out underfoot – a continuation from the entrance hall.

An arched alcove adds character, as light streams in through a large window overlooking the distant trees to the front. Built in storage is handy for coats and shoes, whilst tucked away to the rear of the room is a handy downstairs WC, with gleaming marbled grey tiles to the walls and panelling to the ceiling, where spotlighting shines down. Storage can be found in the vanity unit beneath the sink, whilst a heated towel radiator also features.



Wine & Dine

Returning to the entrance hall, enjoy mealtimes with the family in the dining room to the left, brightly lit courtesy of natural light streaming in through the broad bay window to the front. White walls evoke the moniker of the home, crisp and fresh and balanced by striped monochrome décor to the feature wall. A ceiling rose overhead adds a decorative touch.

Next door to the left, discover the family room, where a quirky, contemporary keyhole-design fireplace encompasses a gas fire. French doors connect this spacious room with the garden beyond, with wood laminate flooring practical and stylish underfoot for indoor-outdoor living in the summer months. Serene shades to the wall evoke the effortless elegance of the home.

A Culinary Haven

Ahead from the entrance hall, step onto the large charcoal tiles of the kitchen, where white cabinetry provides plenty of storage, and contemporary grey worktops afford ample preparation space. Grooved drainage accompanies the inset sink, whilst additional appliances include an electric hob, Caple extractor fan, oven, microwave oven, AEG dishwasher, fridge and freezer. Dine casually at the breakfast bar, or step outside for breakfast alfresco on the elevated patio where splendid views out over the countryside await.



And So To Bed...

Back in the entrance hall, stylish grey stairs lead up to a half landing before dividing to the left and right. Turning right, discover the first of the four bedrooms, overlooking the fields to the front and dressed in a soothing blue floral wallpaper to a feature wall. Inset spotlighting retains a modern feel, whilst there is ample space for wardrobes and drawers alongside a double bed.

Soothe your senses and catch up on your favourite show in the family bathroom, where a deep bath with shower head attachment and built in television awaits, alongside a WC and floating wash basin and towel radiator. There is also a large corner shower with feature black tiling.

From the central landing, branch left and step up to arrive at the principal bedroom, where ash-toned wood-effect flooring flows out underfoot. A spacious sanctuary, floor to ceiling wardrobes span one wall, providing storage for all seasons. Wake up to verdant views out over the garden and fields beyond, often grazed by lambs in spring.

Peace, privacy and refreshment await in the ensuite shower room, where alongside a corner shower with drench head and wand attachment, are a heated towel radiator, inset shelving, wash basin and WC.

Bedroom two, carpeted in grey, is a sublime guest suite, where white fitted wardrobes along one wall offer so much storage and a bountiful bay window reinforces the rurality of the region, framing views out to hedgerows and fields beyond the road.

A ceiling rose adorns a fourth bedroom, also overlooking the fields to the front. With light wood flooring underfoot and fresh grey walls, this minimal and light filled room could make an ideal nursery or study.





Bedroom Beckons

From the central landing, branch left and step up to arrive at the principal bedroom, where ash-toned wood-effect flooring flows out underfoot. A spacious sanctuary, floor to ceiling wardrobes span one wall, providing storage for all seasons. Wake up to verdant views out over the garden and fields beyond, often grazed by lambs in spring.

Peace, privacy and refreshment await in the ensuite shower room, where alongside a corner shower with drench head and wand attachment, are a heated towel radiator, inset shelving, wash basin and WC.

Bedroom two, carpeted in grey, is a sublime guest suite, where white fitted wardrobes along one wall offer so much storage and a bountiful bay window reinforces the rurality of the region, framing views out to hedgerows and fields beyond the road.

A ceiling rose adorns a fourth bedroom, also overlooking the fields to the front. With light wood flooring underfoot and fresh grey walls, this minimal and light filled room could make an ideal nursery or study.





Glorious Garden Views

Accessible from both the lounge and kitchen, make your way out into the garden where stone steps lead up to a spacious patio, ideal for summer barbecues and evening drinks, where uninterrupted countryside views create a stunning backdrop for alfresco dining.

Beyond, a well-tended lawn stretches out, bordered by mature shrubs and flowerbeds that provide a haven for birds and butterflies. To the left, an additional lawned area offers a perfect space for children's play, while planting adds depth and seasonal colour. Estate fencing encloses the garden to the rear, ensuring a seamless connection with the surrounding fields – a haven for nature.





Out & About

Nearby, explore the fantastic countryside close by, with the cloughs, brooks and coppices of Starling Wood ideal for dog walkers, and your morning run. Ainsworth Woods and Lowercroft Lodges are also within easy reach.

Close by, you can reward your endeavours with a thirst-quencher at local pubs, The Toby Carvery Ainsworth, The Ainsworth Arms, The Rose and Crown or The Black Bull.

For meals out, treat the family to Italian cuisine at Casalingo in nearby Ainsworth or Rapallo in Walshaw. Family fun awaits on your doorstep, with canal walks within easy reach, alongside the Steam Railway and local sailing club. Convenient for all your essentials, shops are just a short distance away, with expedient access to a hairdressers, GP surgery, dentist and chemist. Commute with ease, close to road and rail links, whilst families are spoiled for choice, in the proximity of a number of schools including Lowercroft Primary School, Christ Church Ainsworth Church of England Primary School, Greenhill Primary School and Bury Grammar School.

A home where modern elegance meets countryside charm, The Whitehouse is a peaceful retreat that blends space, style and serenity. Whether entertaining in the open-plan living spaces, unwinding in the beautifully landscaped garden, or simply soaking up the ever-changing rural views, this home offers a lifestyle of comfort and balance.



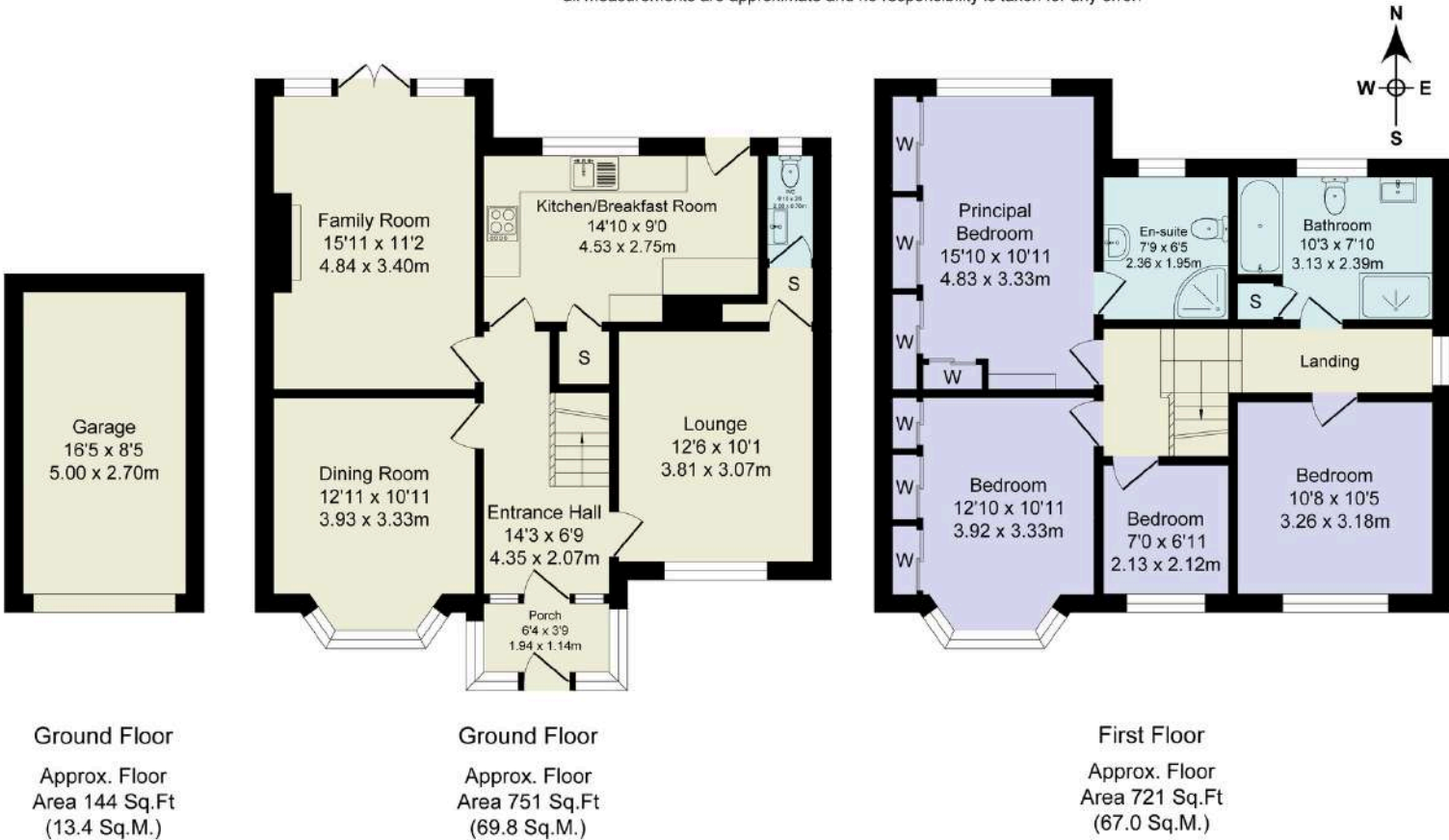
The Finer Details

- Beautiful Four Bedroom Detached Home
- Contemporary Art Deco Accents
- Principal Bedroom with Modern Ensuite
- Three Light-Filled Reception Rooms
- Private Garage and Driveway with Parking for Multiple Vehicles
- Landscaped Rear Garden with Large Patio Area
- Open Countryside to the Front and Rear
- Excellent Local Amenities, Schools and Commuter Links Nearby
- Leasehold 932 Years Remaining, Ground Rent £7 Per Annum
- Bury Council Tax Band F

Score	Energy rating	Current	Potential
92+	A		
81-91	B		
69-80	C		80 C
55-68	D	63 D	
39-54	E		
21-38	F		
1-20	G		

Total Approx. Floor Area 1616 Sq.ft. (150.2 Sq.M.)

Surveyed and drawn by Lens Media for illustrative purposes only. Not to scale. Whilst every attempt was made to ensure the accuracy of the floor plan, all measurements are approximate and no responsibility is taken for any error.



WAINWRIGHTS

ESTATE AGENTS

To view Bury & Bolton Road,
Call 01204 773556 or email sales@wainwrightshomes.com