

Sandeman Way, Horsham

Offers Over £700,000

4 2 3



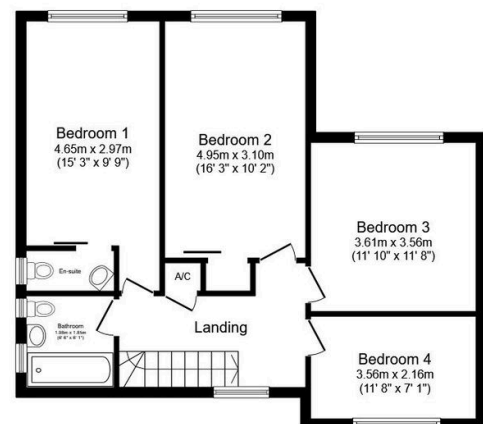
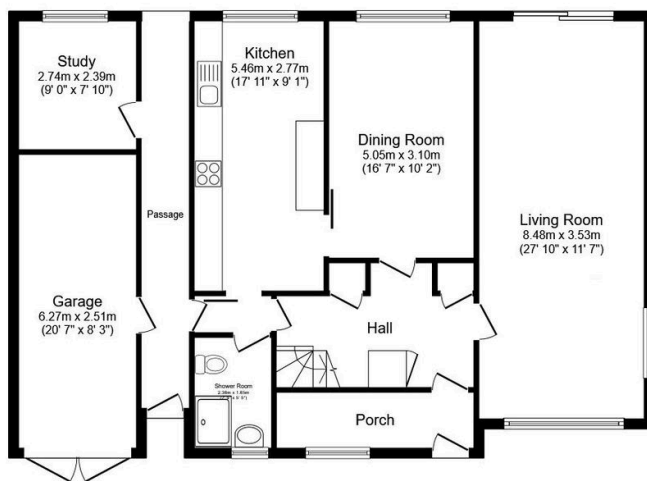
An Extended Detached Family Home close to Popular Schools, boasting a Large South Facing Garden, exciting Potential to Extended (stpp) and No Onward Chain.

Council Tax: F

EPC: Current D - Potential C

Key Features

- Watch Our Video Tour
- Extended Detached Family Home
- Generous South Facing Garden
- Four Double Bedrooms
- 27ft Triple Aspect Living Room
- Family Bathroom & Shower Room
- Potential To Improve/Personalise
- 20ft Garage & Driveway Parking
- No Onward Chain
- Popular School Catchment



Total floor area: 186.2 sq.m. (2,004 sq.ft.)

This floor plan is for illustrative purposes only. It is not drawn to scale. Any measurements, floor areas (including any total floor area), openings and orientations are approximate. No details are guaranteed, they cannot be relied upon for any purpose and do not form any part of any agreement. No liability is taken for any error, omission or misstatement. A party must rely upon its own inspection(s). Powered by www.Propertybox.io