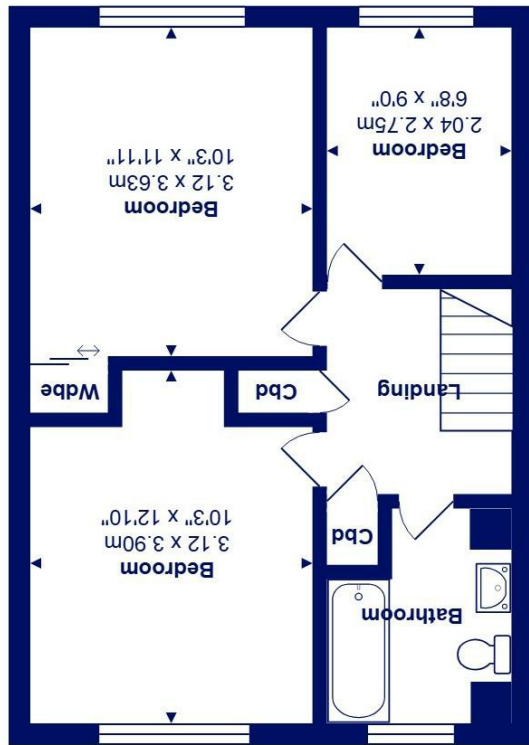




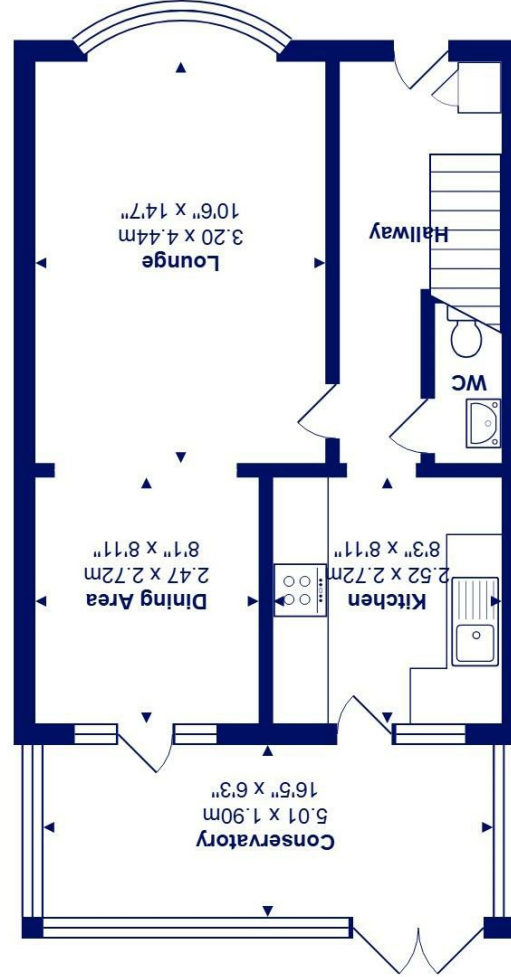
Total Area: 89.8 m² ... 967 ft²
All measurements are approximate and for display purposes only



First Floor



Ground Floor



1 William Close, Walkford, BH23 5SB *£324,950*

Mitchells
1963 — TODAY

A well-presented three bedroom end of terrace home, tucked away in a popular Walkford cul-de-sac. Offering balanced accommodation throughout.

The property benefits from a spacious living room, fitted kitchen and a conservatory extension to the rear providing valuable additional reception space overlooking the west facing rear garden. No forward chain, viewing highly recommended.

- No forward chain
- Three bedrooms
- Family bathroom on first floor
- Dual aspect large Lounge/Dining room
- Conservatory extension to rear
- Ground floor wc
- End of terrace position and quiet-cul-de sac
- Convenient for local amenities and transport links
- Sought after residential location within walking distance of the shops at Walkford, Highcliffe Schools catchment area and a short drive to Highcliffe beach

EPC Rating Band: D
Council Tax Band: D
Freehold

Successful buyers will be required to complete online identity checks provided by Lifetime Legal. The cost of these checks is £45 inc. VAT per purchase which is paid in advance, directly to Lifetime Legal. This check verifies your identity in line with our obligations as stipulated by our regulatory body, HMRC

