



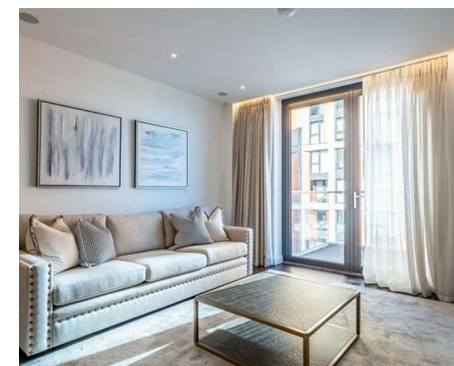
Let **UK** Home

**3 Bedrooms**

**Flat**

Located in London

**£7,215 Per Month**



[info@letukhome.co.uk](mailto:info@letukhome.co.uk)

<https://www.letukhome.co.uk/>

01795 358 886



# 4 Charles Clowes Walk London

SW11 7AG



An impressive interior designed 1,123 Sq Ft three double-bedroom, two-bathroom air conditioned apartment located in Thornes House forming part of The Residence Collection in Nine Elms on London's iconic South Bank.

This luxury apartment is situated on the 9th floor of this prestigious building which features a 24-hour manned concierge along with a dedicated building manager, lift service, gym, media room, board room and secure underground parking.

The apartment comprises a spacious reception room complete with Samsung Smart TV's with Bose sound bars incorporating a built in Amazon Alexa to control the reception room lighting, TV, heating systems and electric privacy curtains along with a private balcony. The reception room is open plan with a fully fitted kitchen featuring integrated Miele appliances and Hot Tap with floor to ceiling windows.

The apartment offers a master bedroom suite with walk-in wardrobes, an en-suite bathroom featuring a custom designed mirrored unit with integrated demisting features as well as a private balcony from the bedroom. The apartment benefits from two further double-bedrooms and a family shower room with WC and separate guest cloakroom. The apartment also benefits from ample storage space.

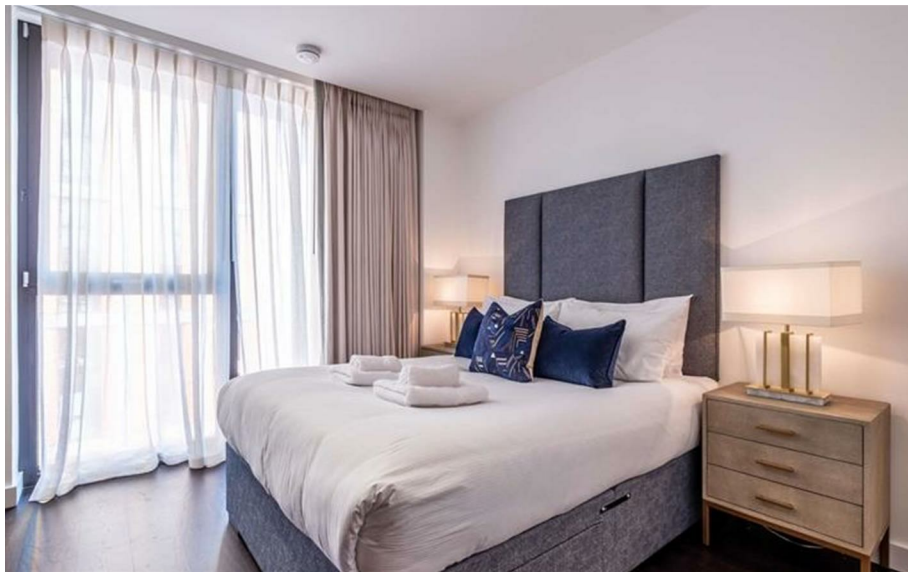
Thornes House is ideally positioned between two new Northern Line underground stations, adding to the extensive transport links including tree lined footpaths, dedicated cycle lanes, Clipper river service, local buses and the Pimlico bridge providing direct access into neighbouring Chelsea.

# 4 Charles Clowes Walk London

£7,215 Per Month



- 9th Floor
- On-site Gym | Cinema Media Room | Board Room
- 24-Hour Concierge Service | On-Site Building Manager | CCTV
- Flexible Rental Terms | Available Furnished & Unfurnished
- Interior Designed | Private Balconies | Air Conditioning
- Underground Secure Parking | Bike Storage
- 24-Hour Emergency Helpline | Lift Service
- EPC Rating: B





Let **UK** Home

3F 2 Eastbourne Terrace  
 Paddington  
 London  
 W2 6LG

01795 358 886

info@letukhome.co.uk

**Council Tax Band: G**

**Local Authority:**

Agents Note: Whilst every care has been taken to prepare these particulars, they are for guidance purposes only. All measurements are approximate and are for general guidance purposes only and whilst every care has been taken to ensure their accuracy, they should not be relied upon and potential buyers/tenants are advised to recheck the measurements.

Energy Efficiency Rating		Current	Potential
<i>Very energy efficient - lower running costs</i>			
(92 plus) <b>A</b>			
(81-91) <b>B</b>		85	85
(69-80) <b>C</b>			
(55-68) <b>D</b>			
(39-54) <b>E</b>			
(21-38) <b>F</b>			
(1-20) <b>G</b>			
<i>Not energy efficient - higher running costs</i>			
<b>England &amp; Wales</b>	EU Directive 2002/91/EC		

<https://www.letukhome.co.uk/>