



**WHITEHORNES**

Buy. Sell. Let. Relax!

0114 268 8533  
info@whitehornes.com  
www.whitehornes.com



**39 Alms Hill Road, Park Head**

Sheffield

Guide Price £625,000 - £650,000

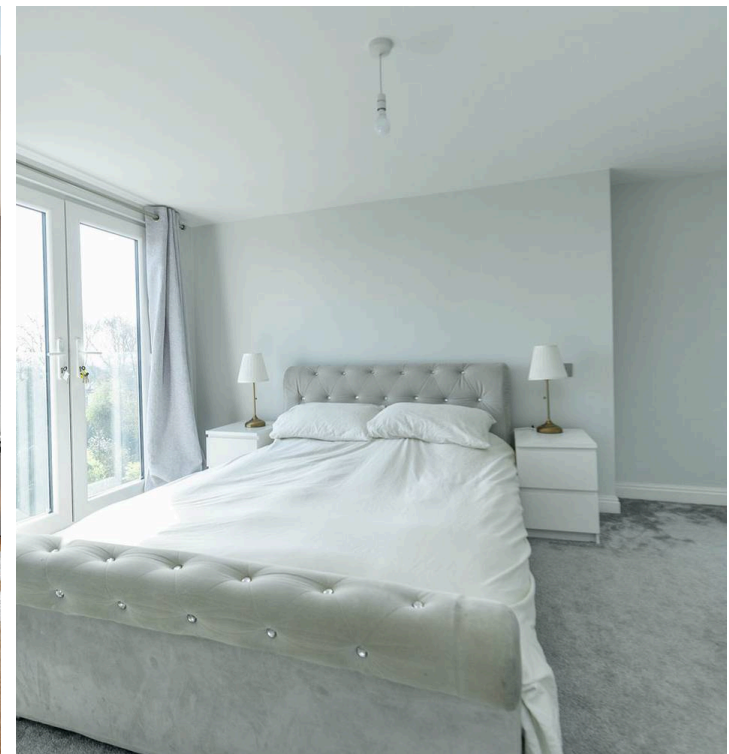
# 39 Alms Hill Road

Park Head, Sheffield

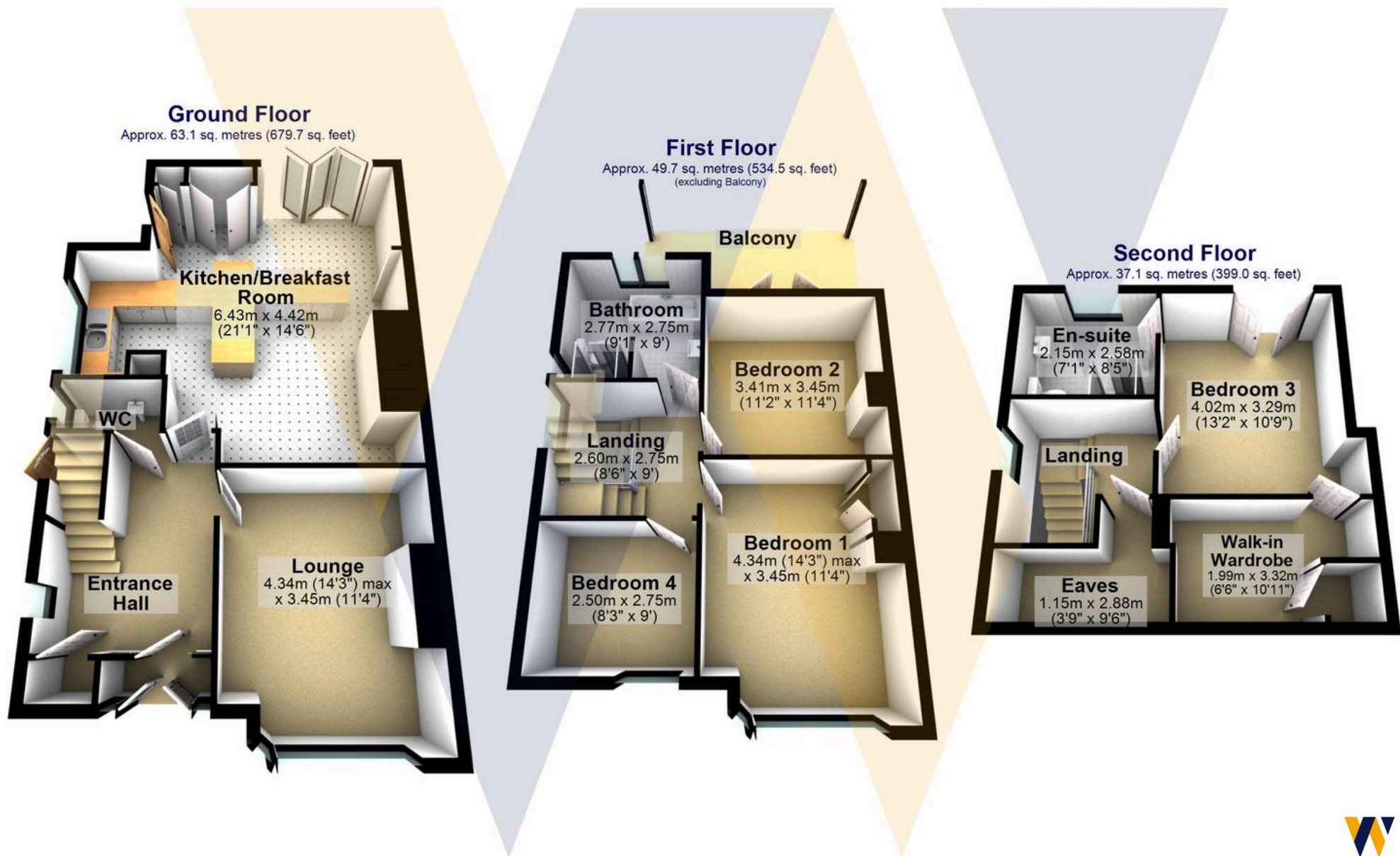
This stunning four double bedroom, two bathroom, bay windowed semi-detached family home showcases the very highest standards of contemporary living, with no expense spared by the current vendors. Arranged over three superb floors and totalling an impressive 1,613 square feet, the property has been tastefully and skilfully extended to the rear and into the loft. The ground floor epitomises open plan living, featuring a spacious kitchen, dining, and living area with bi-fold doors opening onto a raised balcony (perfect for entertaining or simply enjoying the view). Each bedroom is generously sized, ensuring comfort and flexibility for the growing family, while the bathrooms are finished with high quality fittings and modern tiling. The property is located within the catchment area for Ofsted-rated excellent schools, including the renowned Dobcroft Juniors and Silverdale Secondary.

Council Tax band: D Tenure: Leasehold

- STUNNING FOUR DOUBLE BEDROOM TWO BATHROOM BAY WINDOWED SEMI DETACHED FAMILY HOME
- FINISHED INTERNALLY TO THE VERY HIGHEST OF STANDARDS WITH NO EXPENSE SPARED BY THE CURRENT VENDORS
- OFFERING THE EPITOME OF CONTEMPORARY OPEN PLAN LIVING TO THE GROUND FLOOR WITH BI-FOLD DOORS GIVING ACCESS TO A RAISED BALCONY TASTEFULLY AND SKILFULLY EXTENDED TO THE REAR AND LOFT
- THREE SUPERB FLOORS OF ACCOMMODATION TOTALLING AN IMPRESSIVE 1,613 SQ FEET
- ABSOLUTELY PITCH PERFECT FOR THE GROWING FAMILY MARKET WITH VIEWING A PREREQUISITE TO DO FULL JUSTICE TO THE SIZE AND QUALITY ON OFFER







Total area: approx. 149.9 sq. metres (1613.1 sq. feet)

All measurements are approximate  
Plan produced using PlanUp.

**39 Alms Hill Road**



**WHITEHORNES**

Buy. Sell. Let. Relax!

0114 268 8533  
info@whitehorses.com  
www.whitehorses.com