



WESTBOURNE GROVE TERRACE,

£330,000

No Onward Chain
Separate Kitchen
Leasehold
Studio
Lift
Great Location

@marshandparsons
marshandparsons.co.uk

MARSH &
PARSONS



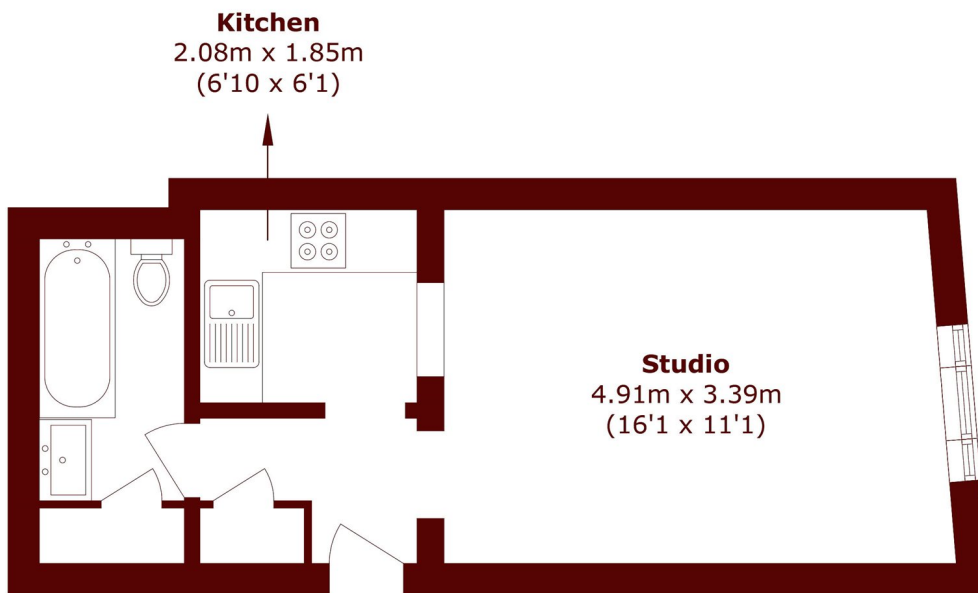
ABOUT THE PROPERTY

A well presented studio apartment ideally located just moments from Westbourne Grove and Queensway. This charming property is in excellent condition throughout and is situated on the lower ground floor of an attractive period conversion, further benefiting from lift access within the building.

Westbourne Grove Terrace is ideally positioned just off Westbourne Grove, offering a wide array of boutique shops, cafés, and restaurants only moments away. Bayswater and Queensway Underground stations are within easy walking distance, as are the open green spaces of Kensington Gardens and the newly redeveloped Whiteleys.



STEP INSIDE WESTBOURNE GROVE TERRACE



Total area (approx.): 28.8 sq. m (310.0 sq. ft)

Notting Hill
020 7313 2890

Energy Rating: E We aim to make our particulars both accurate and reliable. However, they are not guaranteed; nor do they form part of an offer or contract. If you require clarification on any points then please contact us, especially if you're traveling some distance to view. Please note that appliances and heating systems have not been tested and therefore no warranties can be given as to their good working order

MARSH &
PARSONS