



Culverden Court, Oatlands Drive, Weybridge, KT13 9LQ





Offered for sale with no onward chain, this two bedroom maisonette is located in a small cul de sac in the heart of Oatlands Village in Weybridge. The location is perfect for the extremely popular schools, including Cleves, Heathside, and Oatlands primary, as well as being within a short walk of the shops and park.

The property benefits from its own private southerly aspect garden to the rear, a rare a sought-after piece of outside space in this price range.



Accommodation includes an entrance hallway providing access to all the rooms. The reception room is spacious, with ample space for a living area and a dining table. The kitchen is fitted with a range of eye and base level storage units, oven and hob, and view to the rear.

The main bedroom has attractive views to the rear and there is a further bedroom and a bathroom fitted with a white bathroom suite and tiled walls.



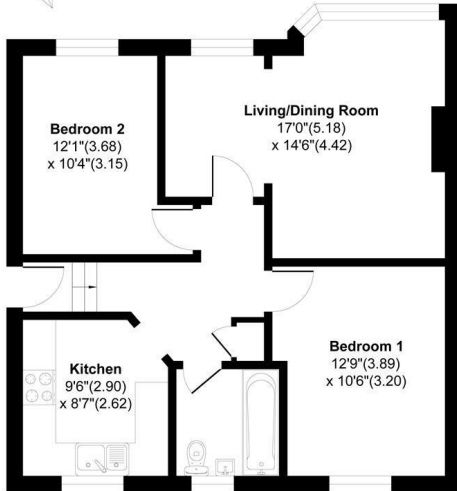
Offered for sale with no onward chain.

Leasehold

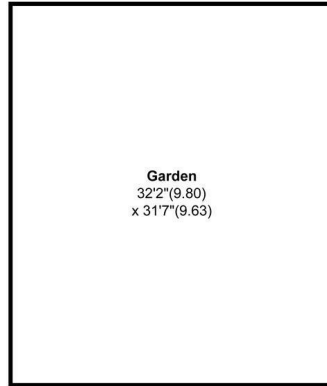
Culverden Court, Oatlands, Weybridge KT13

Approximate Area = 675 sq ft / 62.6 sq m

For Identification Only - Not to scale



First Floor



Garden

Floor plan Produced in accordance with RICS Property Measurement 2nd Edition, Incorporating International Property Measurement Standards (IPMS2 Residential), Produced for Grants Homes Agents.



EPC Rating: 54 E





Grants Homes 60 Church Street, Weybridge, Surrey, KT13 8DL
T: 01932 841020 E: weybridge@grantshomes.co.uk

