



jordan fishwick

DIDSBURY
Parrs Wood Road



Parrs Wood Road, Didsbury, M20 5QG

Offers Over £450,000



The Property

An extended, four bedroom, semi detached family home offering superb potential with an impressive rear garden extending to approximately 75 ft and a great location, close to Didsbury Village and Fletcher Moss Park.

The living space does benefit from double glazed windows and gas central heating, although with an obvious need for an element of modernisation. In outline comprising :- Entrance hall, lounge with bay window, separate dining room with sun room off and kitchen on the ground floor, with the first floor landing giving way to the four bedrooms, shower room and separate wc.

Outside, the front driveway provides parking with an adjoining garden and in turn leading to the attached garage being over 18 ft in length, whilst to the rear is a generous garden with ornamental pond and a range of plants, shrubs & trees.. ** NO ONWARD CHAIN **

Directions

M20 5QG



- Fantastic potential
- Extended semi detached family home
- Four bedrooms
- Impressive 75 ft rear garden
- Driveway & attached garage
- Lounge & separate dining room
- Gas central heating
- Double glazed windows
- Great location
- No onward chain

Postcode - M20 5QG

EPC Rating - D

Floor Area - 1411.00 sq ft

Local Authority - Manchester City Council

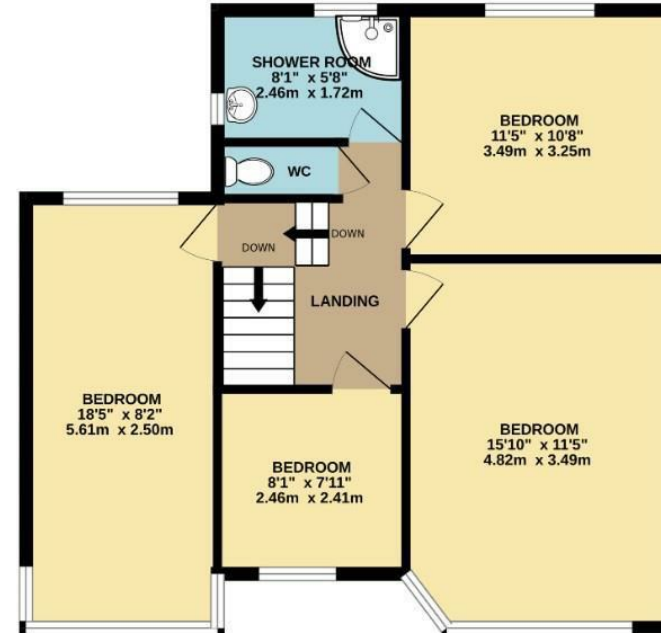
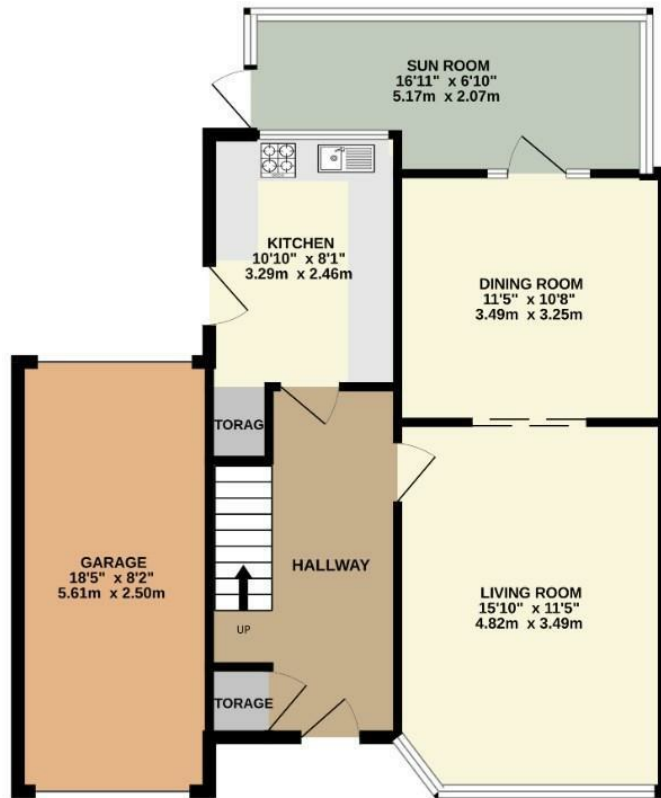
Council Tax - D



GROUND FLOOR
764 sq.ft. (71.0 sq.m.) approx.



1ST FLOOR
646 sq.ft. (60.0 sq.m.) approx.



TOTAL FLOOR AREA : 1411 sq.ft. (131.0 sq.m.) approx.
Measurements are approximate. Not to scale. Illustrative purposes only
Made with Metropix ©2026



These particulars are believed to be accurate but they are not guaranteed and do not form a contract. Neither Jordan Fishwick nor the vendor or lessor accept any responsibility in respect of these particulars, which are not intended to be statements or representations of fact and any intending purchaser or lessee must satisfy himself by inspection or otherwise as to the correctness of each of the statements contained in these particulars. Any floorplans on this brochure are for illustrative purposes only and are not necessarily to scale.

Offices also at: Wilmslow, Macclesfield, Hale, Sale, Chorlton, Glossop, Manchester & Salford

757-759 Wilmslow Road, Didsbury Village, Manchester

0161 445 4480

didsbury@jordanfishwick.co.uk
www.jordanfishwick.co.uk