

Chestnut Corner

Guildford, Surrey







A superbly presented semi-detached cottage with summer house, garden and parking.

Guildford 4.6 miles (London Waterloo from 33 mins), Godalming 5.3 miles (London Waterloo from 44 mins),

Dorking 10.6 miles (London Waterloo from 53 mins)

Airports: London Heathrow 25 miles, London Gatwick 23 miles

(All distances and times are approximate)



3



2



2

Summary of accommodation

Dining room | Living room | Kitchen

Principal bedroom suite | Two further bedrooms | Two bathrooms

Garden | Parking | Summer house

Granted planning permission to extend the house

Application number WA/2024/00984

Situation

Located in the heart of the Surrey Hill, an Area of Outstanding Natural Beauty, the village of Blackheath offers the most idyllic situation surrounded by heathland, providing ample opportunities for walking, riding, cycling and outdoor pursuits. Blackheath is a much-requested village with a thriving community with its own church, cricket green and village hall.

Guildford is easily accessible and the local villages of Chilworth, Shamley Green, Albury and Wonersh have local convenience shops with Chilworth benefitting from railway stations linking into Guildford. There are main line stations at Farncombe and Godalming offering fast and frequent services to London Waterloo with journey times from about 35 minutes.

There are many schools within easy reach including Aldro, Longacre, St Catherine's, King Edwards, Duke of Kent, Hurtwood House, Cranleigh and Charterhouse.







Chestnut Corner

This charming semi-detached Victorian cottage is a perfect for anyone seeking a peaceful and idyllic living experience. The property is beautifully presented with its delightful, spacious and functional accommodation. The property also has the added benefit of granted planning permission to extend the house on the ground floor, to create a utility room and downstairs cloakroom, as well as a wonderful open plan kitchen/breakfast room, leading onto the garden.

The application number is WA/2024/00984.

The ground floor benefits from a light and airy kitchen, a large living room and dining room that boasts ample space to entertain guests with double doors that lead into the garden, providing massive amounts of natural light.

On the first floor there are two bedrooms and a generous bathroom. The substantial principal bedroom with an en suite bathroom, is located on the second floor.



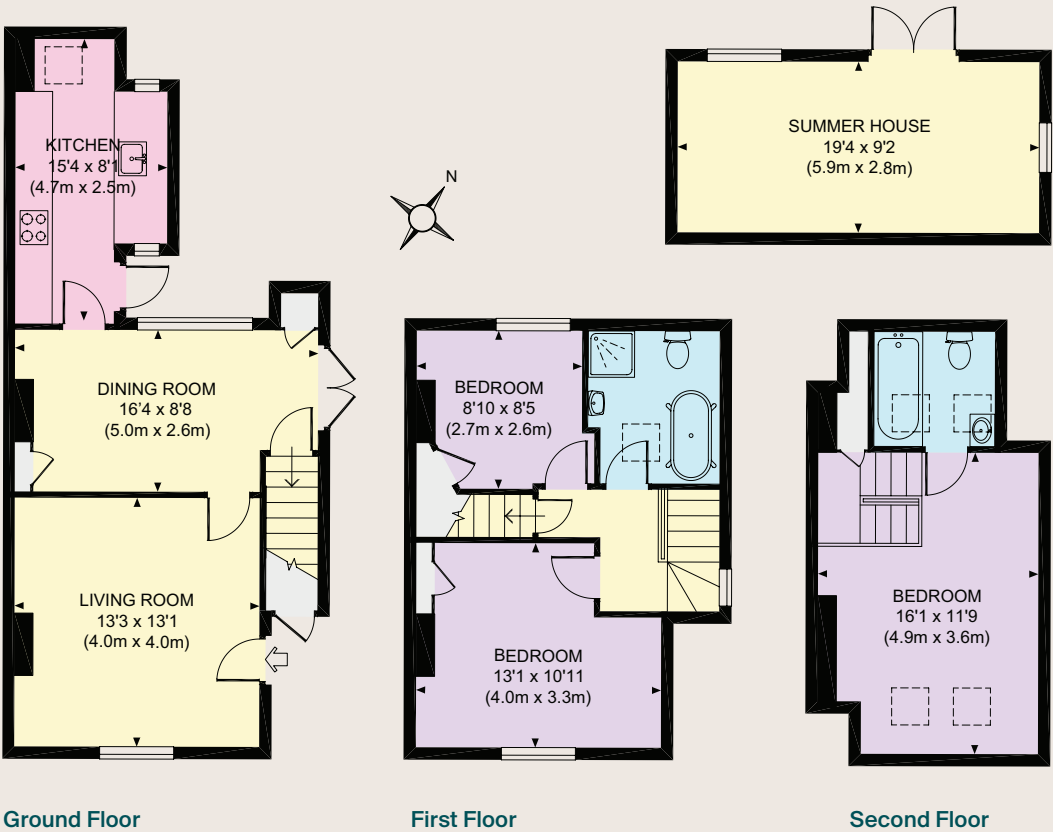




EXISTING FLOOR PLAN

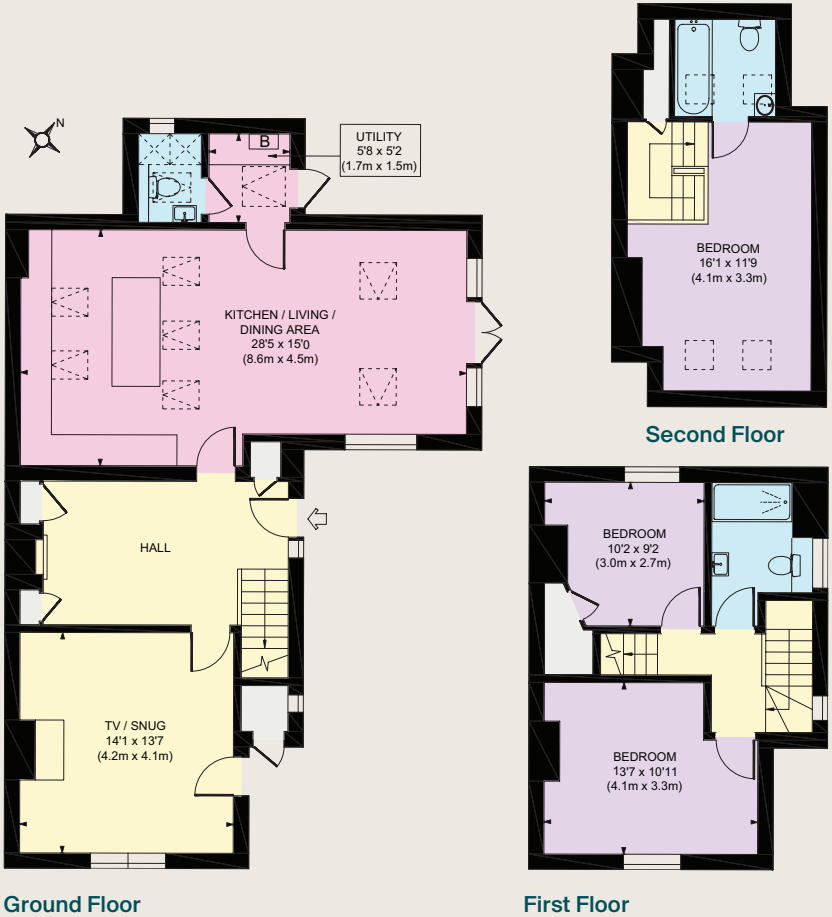
Approximate Gross Internal Floor Area
1012 sq ft / 94.1 sq m
Outbuildings: 175 sq ft / 16.2 sq m
Total: 1187 sq ft / 110.3 sq m

- Reception
- Bedroom
- Bathroom
- Kitchen/Utility
- Storage
- Outside



GRANTED PLANNING PERMISSION

Approximate Gross Internal Floor Area
1473 sq. ft / 136.90 sq. m



This plan is for guidance only and must not be relied upon as a statement of fact. Attention is drawn to the Important Notice on the last page of the text of the Particulars.

Garden and Grounds

Surrounded by mature hedging that provides privacy and seclusion, the garden is primarily laid to lawn interspersed with fruit and specimen trees. To the rear of the garden is a summer house which is perfect for additional storage or accommodation.





Property Information

Services

We are advised by our clients that the property has mains water, electricity, drainage and gas central heating.

Local Authority

Waverley Borough Council – 01483 523333

Council Tax

Band D

EPC Rating

F

Directions (Postcode: GU4 8RA)

From Guildford proceed south on the A281 towards Horsham. In Shalford, continue over the railway bridge and at the roundabout take the first exit. Continue on towards the village of Wonersh. Just before the village, turn left into Blackheath Lane signposted to Barnett Hill and Blackheath. Continue for about 1 mile into the centre of Blackheath and before the crossroads, 4 Chestnut Corner will be found on the left hand side just after the village hall.

Viewing

Viewing is strictly by appointment through Knight Frank.



Knight Frank Guildford

2-3 Eastgate Court

High Street, Guildford

GU1 3DE

Morten Boardman

01483 617930

morten.boardman@knightfrank.com

knightfrank.co.uk

Important Notice: 1. Particulars: These particulars are not an offer or contract, nor part of one. You should not rely on statements given by Knight Frank in the particulars, by word of mouth or in writing ("information") as being factually accurate about the property, its condition or its value. Neither Knight Frank nor any joint agent has any authority to make any representations about the property, and accordingly any information given is entirely without responsibility on the part of Knight Frank. 2. Material Information: Please note that the material information is provided to Knight Frank by third parties and is provided here as a guide only. While Knight Frank has taken steps to verify this information, we advise you to confirm the details of any such material information prior to any offer being submitted. If we are informed of changes to this information by the seller or another third party, we will use reasonable endeavours to update this as soon as practical. 3. Photos, Videos etc: The photographs, property videos and virtual viewings etc. show only certain parts of the property as they appeared at the time they were taken. Areas, measurements and distances given are approximate only. 4. Regulations etc: Any reference to alterations to, or use of, any part of the property does not mean that any necessary planning, building regulations or other consent has been obtained. A buyer must find out by inspection or in other ways that these matters have been properly dealt with and that all information is correct. 5. Fixtures and fittings: A list of the fitted carpets, curtains, light fittings and other items fixed to the property which are included in the sale (or may be available by separate negotiation) will be provided by the Seller's Solicitors. 6. VAT: The VAT position relating to the property may change without notice. 7. To find out how we process Personal Data, please refer to our Group Privacy Statement and other notices at <https://www.knightfrank.com/legals/privacy-statement>.

Particulars dated April 2025. Photographs and videos dated April 2025. All information is correct at the time of going to print. Knight Frank is the trading name of Knight Frank LLP. Knight Frank LLP is a limited liability partnership registered in England and Wales with registered number OC305934. Our registered office is at 55 Baker Street, London W1U 8AN. We use the term 'partner' to refer to a member of Knight Frank LLP, or an employee or consultant. A list of members names of Knight Frank LLP may be inspected at our registered office. If you do not want us to contact you further about our services then please contact us by either calling 020 3544 0692, email to marketing.help@knightfrank.com or post to our UK Residential Marketing Manager at our registered office (above) providing your name and address. Brochure by wordperfectprint.com