

19 Greenford Avenue, Hanwell, London, W7 1LD
020 8567 3219



Freehold / House - End Terrace

Elmbank Way, London

£650,000

An spacious 3 bedroom end-terraced, 'Mock-Tudor' style family home with an excellent sized south facing garden, much potential for extension and off street parking, in this sought after and convenient location.

- 1930s built end terraced house
- Living room
- Fitted kitchen/dining
- Conservatory
- G/F shower-room
- 3 bedrooms
- Family sized bathroom
- Large South facing garden
- Potential to extend
- GCH&DG



Freehold / House - End Terrace

Elmbank Way, W7 3DE

£650,000

This handsome 'mock-Tudor style' 1930's end-terraced, long-term family home, boasts bright and spacious accommodation and is well presented throughout with wood flooring on the ground floor. It features a wide hall with a ground floor shower-room/seperate w.c, living room with original fireplace, open-plan recently fitted 'Shaker-style' kitchen/diner and a conservatory leading onto the garden. Upstairs there are 3 bedrooms (2 with fitted wardrobes) and a smart 4-piece, family sized bath-room. Also boasting an excellent sized loft space, with obvious potential for a large loft conversion (subject to the usual consents). Outside there is an excellent sized, sunny South facing mature rear garden, with a large hard-standing to the rear (ideal studio/garden outbuilding space, or to reinstate a garage, via a shared drive) also offering great potential for a large kitchen extension. Valuable off street parking could also be created to the front. Well cared for, in the same ownership for many years, fully double glazed and warmed by GCH.

Situated at the start of this wide, tree lined residential road, moments from Greenford Avenue with a good range of day to day shops and regular bus services into Ealing Town Centre with multiple transport links and within easy reach of Hanwell Mainline Station for the excellent Elizabeth Line. Served by well regarded local schools (including popular Mayfield primary and Brentside secondary schools) and the lovely green open spaces of Brent valley park and golf course are also close at hand.

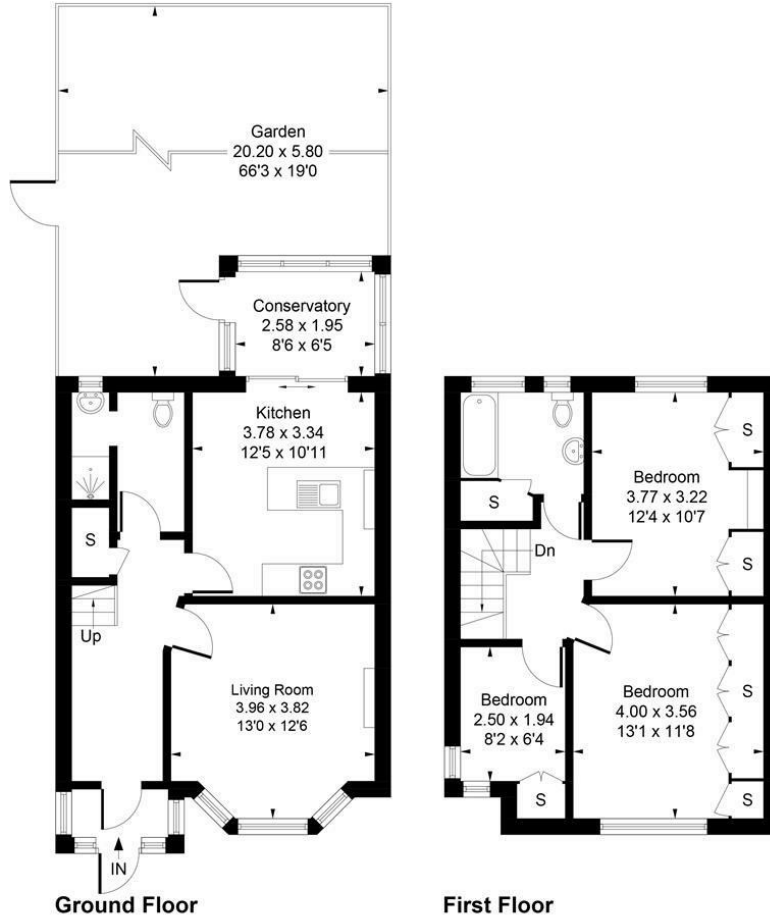


19 Greenford Avenue, Hanwell, London, W7 1LD
020 8567 3219



9 Elmbank Way, W7 3DE

Approximate Gross Internal Area
94.69 sq m / 1019 sq ft



Whilst every attempt has been made to ensure the accuracy of the floor plan contained here, measurements of doors, windows, rooms and any other items are approximate and no responsibility is taken for any error, omission, or mis-statement.
This plan is for illustrative purposes only and should be used as such by any prospective purchaser.
Produced by jcphotographystudio.com

Council Tax Band

E

Energy Performance Graph

Energy Efficiency Rating		Current	Potential
Very energy efficient - lower running costs			
(92 plus) A			
(81-91) B			
(69-80) C			78
(55-68) D	65		
(39-54) E			
(21-38) F			
(1-20) G			
Not energy efficient - higher running costs			
England & Wales	EU Directive 2002/91/EC		

Call us on

020 8567 3219

hanwellsales@sintonandrews.co.uk

www.sintonandrews.co.uk

Agents Note: Whilst every care has been taken to prepare these particulars, they are for guidance purposes only. All measurements are approximate and are for general guidance purposes only and whilst every care has been taken to ensure their accuracy, they should not be relied upon and potential buyers are advised to recheck the measurements.