



110, KIRN DRIVE, GOUROCK, PA19 1EQ





Description

****CLOSING DATE MON 3RD NOV 11AM****

Occupying a highly sought location this extended four bedroom, two public room SEMI DETACHED VILLA offers a unique home ideal for family living. Additional benefits include: a wet room and separate bathroom. Enclosed south facing rear garden with paved patio. The front garden features lawned plots. Monoblock driveway for two cars leads to garage.

Potential to convert the garage and reconfigure current design to offer further accommodation including creation of a self contained annex, subject to permissions being granted.

Conveniently located for Moorfoot Primary and Gourock Golf Course . Specification includes: double glazing and gas central heating. We are advised the extension was reroofed around 10 years ago.

Family accommodation comprises: Hall by UPVC double glazed door with side panel. The Lounge has front facing window and tiled fireplace. The Dining Room is on semi open plan and features sliding patio doors giving access to the garden.

The Kitchen with rear window features white fitted units and marble effect work surfaces. Appliances include: extractor hood, electric ceramic hob, oven plus recently purchased in 2024 a fridge, dishwasher and washing machine.

An Inner Hall leads to the downstairs double Bedroom with fitted wardrobes. There is a downstairs Wet Room with pedestal wash hand basin, wc and wet floor. Additional benefits include: heated towel rail, wall tiling and a "Mira" shower.

Stairs lead to Upper Landing with side window and hatch to the loft. There are three further double Bedrooms with cupboard storage. There is a rear facing Bathroom with three piece suite comprising: vanity wash hand basin set within white unit, wc and bath.

This extended family home must be viewed. EPC = D.

Measurements

Entrance Hall
Lounge
4.42m x 3.63m (14'6" x 11'11")
Dining Room
2.74m x 3.05m (9'0" x 10'0")
Kitchen
3.23m x 2.13m (10'7" x 7'0")
Inner Hall
Downstairs Bedroom 1
3.43m x 4.62m (11'3" x 15'2")
Wet Room
Upper Landing
Bedroom 2
4.27m x 4.52m (14'0" x 14'10")
Bedroom 3
3.02m x 3.84m (9'11" x 12'7")
Bedroom 4
2.62m x 4.67m (8'7" x 15'4")
Bathroom
Garage
2.92m x 5.49m (9'7" x 18'0")

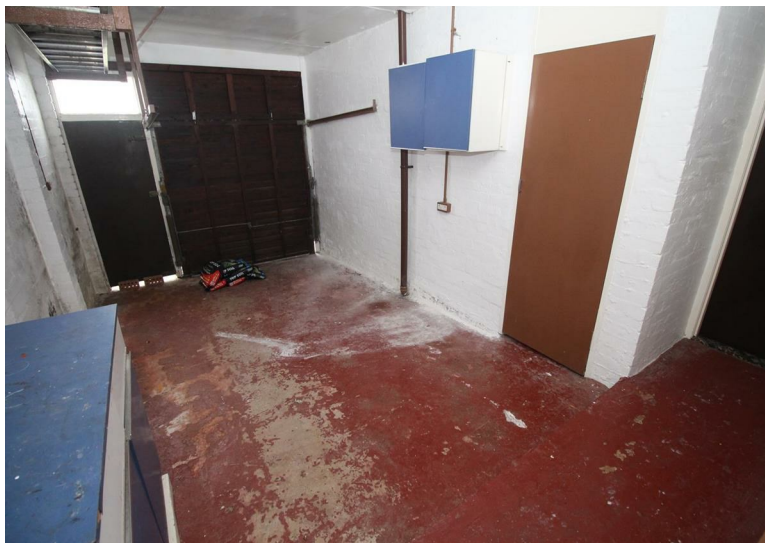












Agents Notes:

These sales particulars are set out as a general outline only, issued in good faith, but do not constitute representations of fact and do not form part of any offer or contract. Any services, equipment, appliances, fittings or central heating systems have not been tested and no warranty is given or implied that these are in working order. All measurements are approximate and for guidance only.

Neither Neill Clerk Estate Agents nor any of its employees or agents has any authority to make or give any representation or warranty whatever in relation to this property.

The
next
step..



To view call 01475 888400. Speak to us 7 days a week until 11pm every day to book your viewing appointment.

House to sell or rent?

Call 01475 888400 to book your free market appraisal.

Require a solicitor?

Ask us to supply a free legal quotation from Neill Clerk & Murray, Solicitors.
www.neillclerkmurray.co.uk

Stay fully up-to-date by following Neill Clerk on:



**60 West Blackhall Street
Greenock
Renfrewshire
PA15 1UY**

t: 01475 888400

e: sales@neillclerk.co.uk

w: www.neillclerk.co.uk



Find all our properties at: [rightmove](https://www.rightmove.co.uk) [Zoopla](https://www.zoopla.co.uk) [onTheMarket.com](https://www.onthemarket.com) [s1homes.com](https://www.s1homes.com)