



Cherry Crescent, TW8

£576 Per week

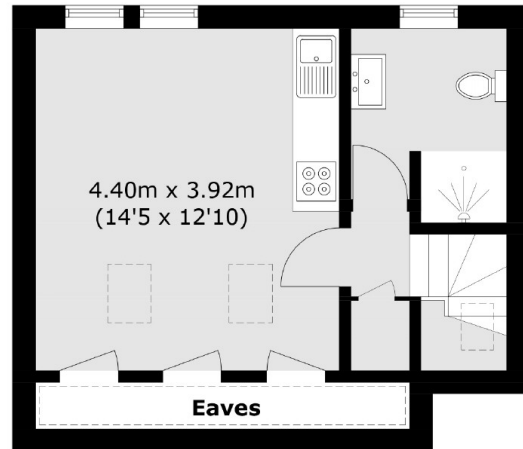
A recently refurbished four bedroom family house set over three floors. This property benefits from a modern kitchen and a large living room leading onto a garden, three bathrooms and a private driveway.

Cherry Crescent is located close to Syon park, offering easy access to Syon Lane train station as well as Osterley tube station.

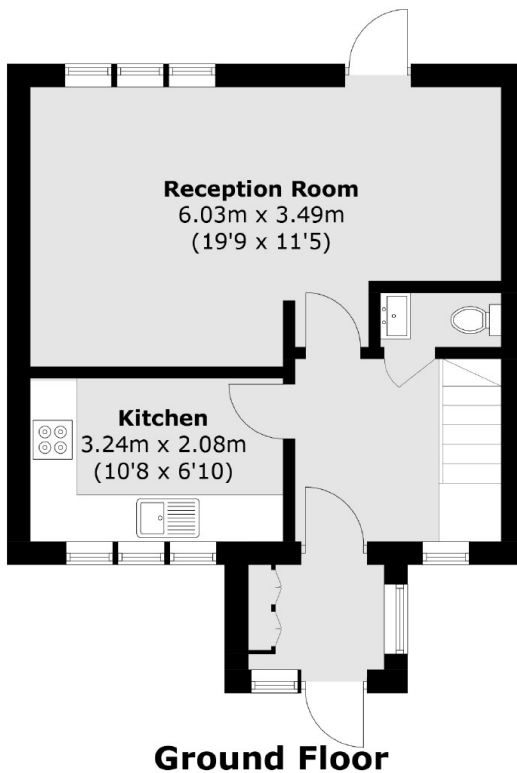
Features

- Recently Refurbished
- Four Bedrooms
- Three Bathrooms
- Off-Street Parking
- Private Garden
- Transport Links

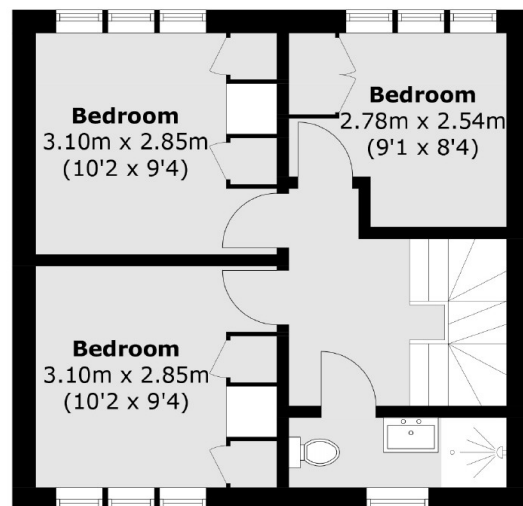
Cherry Crescent, Brentford, TW8



Second Floor



Ground Floor



First Floor

Total area (approx.): 100.5 sq. m (1,081.7 sq. ft)
(Excluding Eaves)