



Clive Road, SE21 | Offers In Excess Of £225,000

02087028111

[dulwichvillage@pedderproperty.com](mailto:dulwichvillage@pedderproperty.com)

**pedder**  
We live local



# In General

- A purpose built first floor apartment in West Dulwich
- One bedroom
- Lounge/dining room
- Fitted kitchen
- Newly re-fitted bathroom
- Well presented throughout
- Gated development
- Sought after location
- Offered with no onward chain

# In Detail

Set within a gated development on this very popular residential road in West Dulwich, SE21 is this one bedroom purpose built apartment.

The property is located on the first floor and has accommodation comprising of one double bedroom, lounge/dining room, fitted kitchen and newly re-fitted bathroom. Externally there are well maintained communal gardens.

Clevedon Court is a popular development set back from Clive Road in Dulwich providing well maintained communal areas and gardens and is ideally positioned to benefit from the local amenities of West Dulwich including numerous shops, cafes and restaurants.

Dulwich Village is close-by with its popular parks, Picture Gallery and Golf Course. Crystal Palace is also easily accessible where there are many cafes, bars, restaurants and shopping facilities. Rail links to central London are from nearby West Dulwich (London Victoria/London Blackfriars), Gipsy Hill (London Bridge /London Victoria) and West Norwood (London Bridge/London Victoria).

The property is offered with no onward chain.

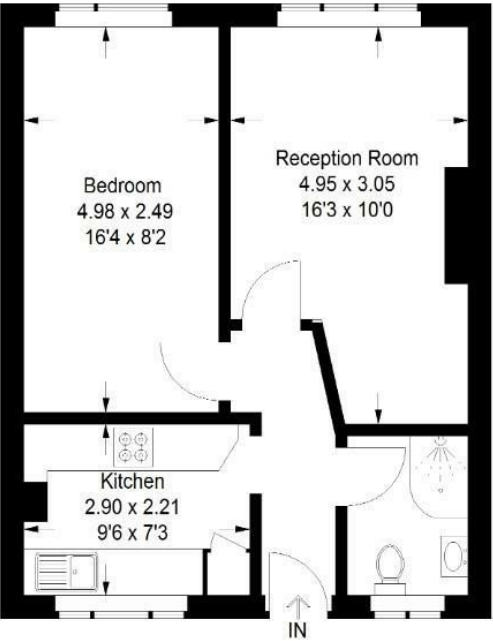
EPC: C | Council Tax Band: B | Lease: 162 years remaining | SC: £141.66 per month | GR: £100 per annum



# Floorplan

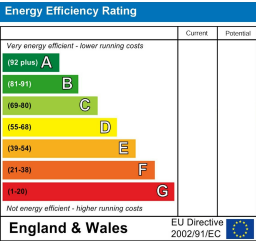
Clevedon Court Clive Road, SE21

Approximate Gross Internal Area  
41.8 sq m / 450 sq ft



First Floor

Copyright www.pedderproperty.com © 2025  
These plans are for representation purposes only as defined by RICS - Code of Measuring Practice. Not drawn to Scale. Windows and door openings are approximate. Please check all dimensions, shapes and compass bearings before making any decisions reliant upon them.



Pedder Property Ltd trading as Pedder for themselves and for the vendor/landlord of this property whose agents they are, give notice that (1) these particulars do not constitute any part of an offer or contract, (2) all statements contained within these particulars are made without responsibility on the part of Pedder or the vendor/landlord, (3) whilst made in good faith, none of the statements contained within these particulars are to be relied upon as a statement of representation or fact, (4) any intending purchaser/tenant must satisfy him/herself by inspection or otherwise as to the correctness of each of the statements contained within these particulars, (5) the vendor/landlord does not make or give either Pedder or any person in their employment any authority to make or give representation or warranty whatsoever in relation to this property.