



ARTHUR MEWS

◇◇◇◇ SW15 2NW ◇◇◇◇





INTRODUCTION

BEAUTIFULLY DESIGNED HOMES

Nestled on a quiet street in the heart of Putney and just moments from the Thames, this development of 3 mews houses and 4 apartments combines calm, considered architecture with the warmth of a true community setting.

Computer-generated images (CGIs) are for illustrative purposes only and may not accurately represent final specifications.



LOCATION

PUTNEY STRIKES THE PERFECT BALANCE

Arthur Mews offers rare tranquility just moments from London's heartbeat. Whether it's the daily commute or a weekend escape, everything you need is within easy reach. From riverside train rides to leafy cycle paths, your journey always starts in calm.



QUIETLY CONNECTED

-  **Putney Station** 5 mins walk*
-  **East Putney Underground (District Line)** 8 mins walk*
-  **Heathrow Airport** 30 mins by car*
-  **Gatwick Airport** 45 mins via Clapham*



- SCHOOLS**

1.

Hotham Primary School

2.

Putney High School

3.

Ashcroft Technology Academy

4.

Brandlehow School

5.

St Mary's C of E Primary School
- PARKS**

6.

Barnes Common

7.

Putney Heath

8.

Wandsworth Park

9.

King Georges Park
- SHOPS**

10.

Putney Exchange

11.

Waitrose & Partners

12.

Sainsbury's
- RESTAURANTS & CAFES**

13.

Coppa Club

14.

The Dynamo

15.

Putney Pies

16.

Wandsworth Riverside Restaurant
- LEISURE**

17.

Richmond Park Golf Course

18.

Nuffield Health

19.

All Star Padel

20.

Putney Lawn Tennis
- DOCTORS SURGERIES**

21.

The Heath Practice

22.

Putneymead Medical Practice

23.

Chartfield Surgery
- TRAVEL**

Putney

East Putney
- A detailed map of Putney and its surrounding areas, including Barnes, Fulham, Wandsworth, Battersea, and Clapham. The River Thames flows through the center of the map. Various roads are labeled, including Upper Richmond Road, Fulham Palace Road, Putney High St, Putney Bridge Rd, and several A-roads (A205, A217, A219, A218, A308, A320, A3205, A3036, A214). The map features numerous numbered markers corresponding to the list on the left, indicating the locations of schools, parks, shops, restaurants, and leisure facilities. Key landmarks include Barnes Common Nature Reserve, Wandsworth Park, Putney Heath, and King George's Park. A compass rose is located in the bottom right corner.
- 10
- 11



RETAIL, DINING & LIFESTYLE

BOUTIQUE
LIVING

Start the day with a flat white at The Dynamo, grab a fresh sourdough from Gail's, and end with dinner on the terrace at Coppa Club. Putney's mix of local charm and understated luxury makes everyday routines feel like something more.

Coppa Club

Putney Park Golf Club

Home SW15

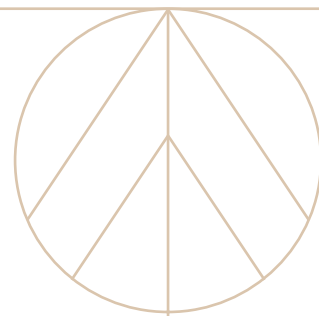
Roehampton Club

Bosa Lounge

Hybrid Fitness

Blades Restaurant





GREEN SPACES

SPACE TO BREATHE

From lazy Sunday picnics to brisk morning jogs, the green lungs of South-West London are yours to explore. Richmond Park's deer-dotted landscape, Wandsworth Park's riverside charm, and Putney Heath's shaded woodland all sit within minutes of Arthur Mews.

Wandsworth Park

Putney Heath

Richmond Park

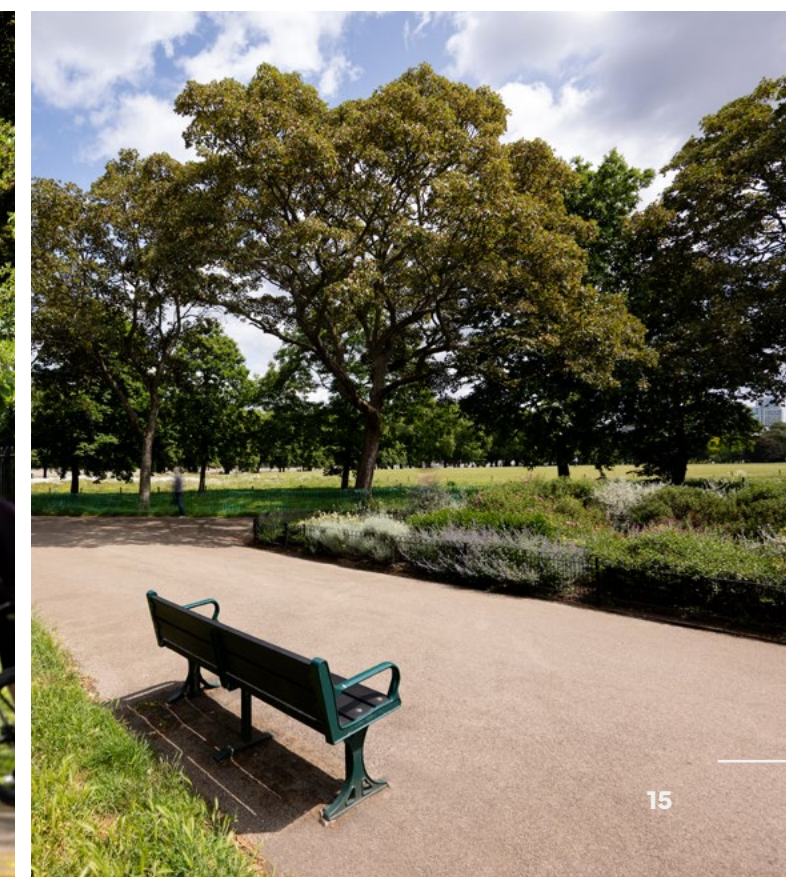
Barnes Common

King George's Park

Leader's Gardens

Wandsworth Common

Bishop's Park (Fulham)





RIVERSIDE LIVING

LIFE BY THE WATER

Here, the river isn't just a view, it's part of daily life. Watch the Oxford-Cambridge Boat Race glide by, sip a glass of wine by the towpath, or start your mornings with a walk by the water. The Thames adds space, rhythm, and reflection to every day.

Hurlingham Yacht Club

Thames Rowing Club

Westminster School Boat Club



FOR THE MODERN FAMILY

A PLACE TO GROW

At Arthur Mews, we've created homes that support real lives, not just lifestyles. Designed with growing families in mind, each home offers a sense of sanctuary and seclusion, without sacrificing connectivity or convenience.

The mews layout provides a safe and peaceful setting, while nearby parks, schools and the riverfront create opportunities to explore, learn and unwind, *together*.





EDUCATION

LEARNING AT
YOUR DOORSTEP

With some of London's most respected schools just a short walk away, families at Arthur Mews enjoy more than a home, they invest in a foundation for the future. School runs are shorter, options are broader, and the journey begins at your doorstep.

Hotham Primary School

Ofsted "Outstanding", bilingual curriculum

Putney High School

One of London's top independent schools

Ashcroft Technology Academy

High-performing secondary

FLOORPLANS & SPECIFICATIONS

DESIGNED
FOR LIFE

Every square metre of Arthur Mews has been crafted with thought and purpose, from smart layouts and ample storage, to tactile finishes and family-friendly flow.

Computer-generated images (CGIs) are for illustrative purposes only and may not accurately represent final specifications.





THE DEVELOPMENT

TIMELESS DESIGN MEETS MODERN COMFORT

Ideal for families, professionals or downsizers alike, Arthur Mews brings a sense of calm and character to contemporary London living.

Computer-generated images (CGIs) are for illustrative purposes only and may not accurately represent final specifications.

FLAT 1
GROUND FLOOR

TWO BEDROOM

INTERNAL AREA

65.3 sq m / 703 sq ft

LIVING / DINING / KITCHEN AREA

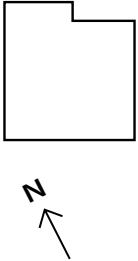
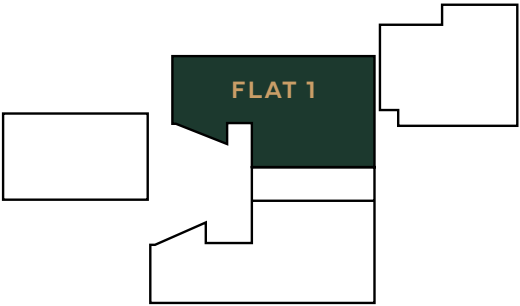
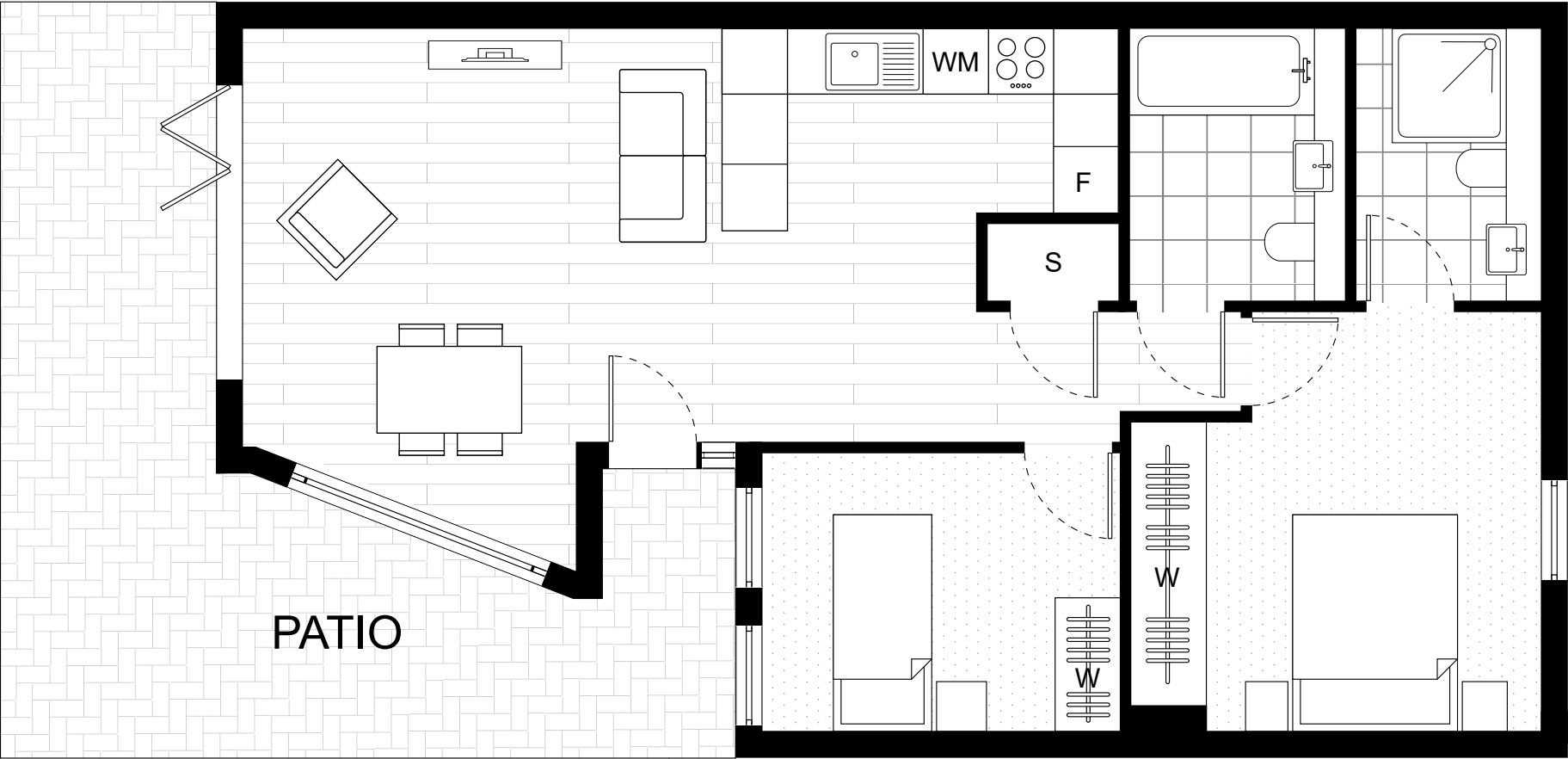
8028 x 4265 mm

BEDROOM 1

3760 x 3850 mm

BEDROOM 2

3280 x 2555 mm



- F FRIDGE
- DW DISH WASHER
- WM WASHING MACHINE
- TD TUMBLE DRYER
- S STORAGE
- C CUPBOARD
- W WARDROBE
- B BALCONY

FLAT 2
GROUND FLOOR

TWO BEDROOM

INTERNAL AREA

64.4 sq m / 693 sq ft

LIVING / DINING / KITCHEN AREA

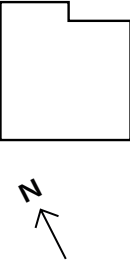
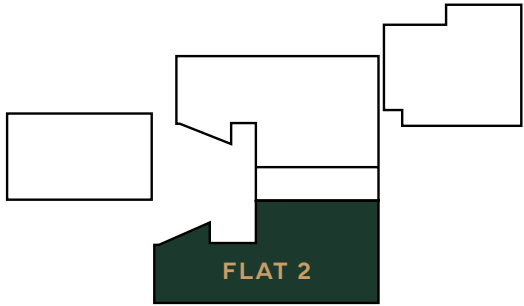
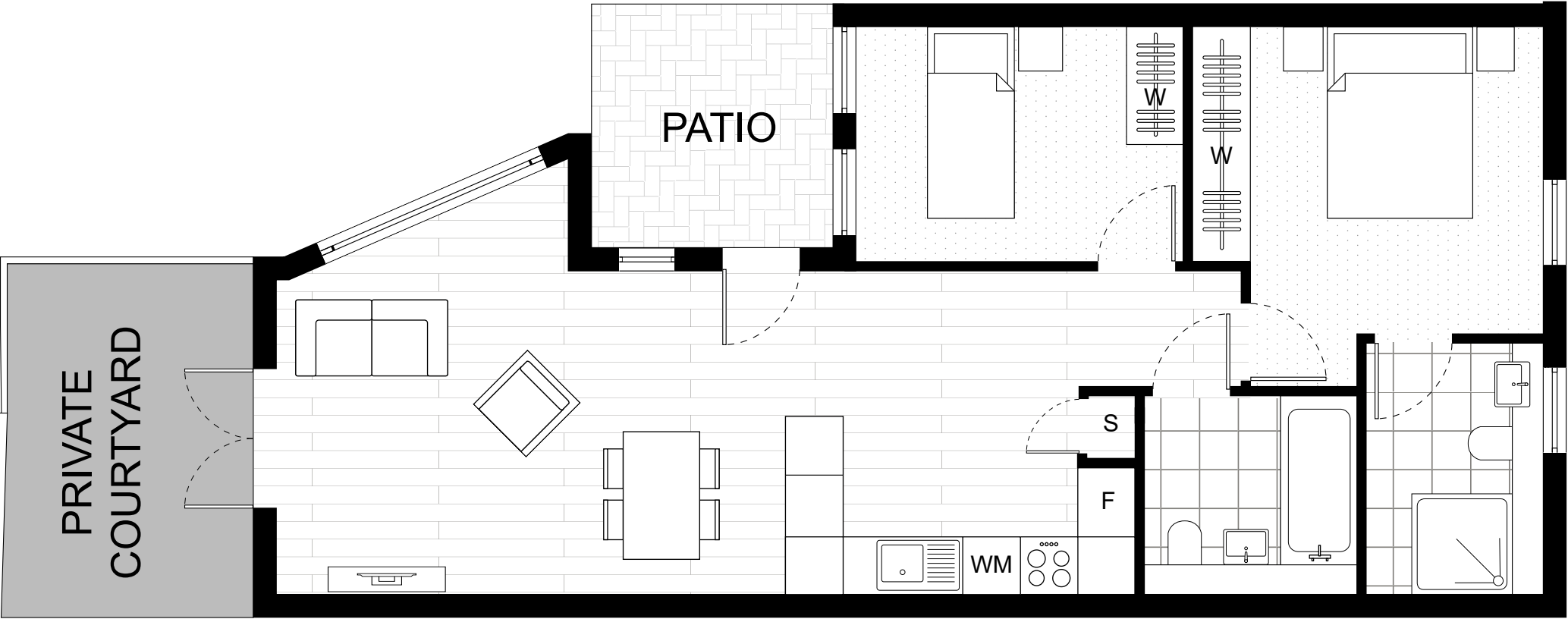
8900 x 4500 mm

BEDROOM 1

3725 x 3834 mm

BEDROOM 2

3390 x 2442 mm



F	FRIDGE
DW	DISH WASHER
WM	WASHING MACHINE
TD	TUMBLE DRYER
S	STORAGE
C	CUPBOARD
W	WARDROBE
B	BALCONY

FLAT 3

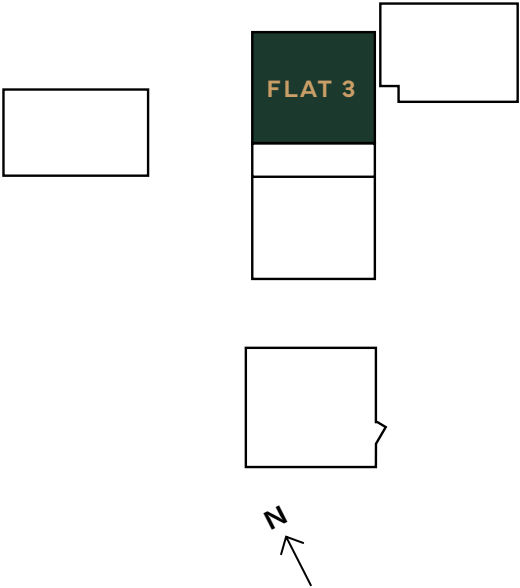
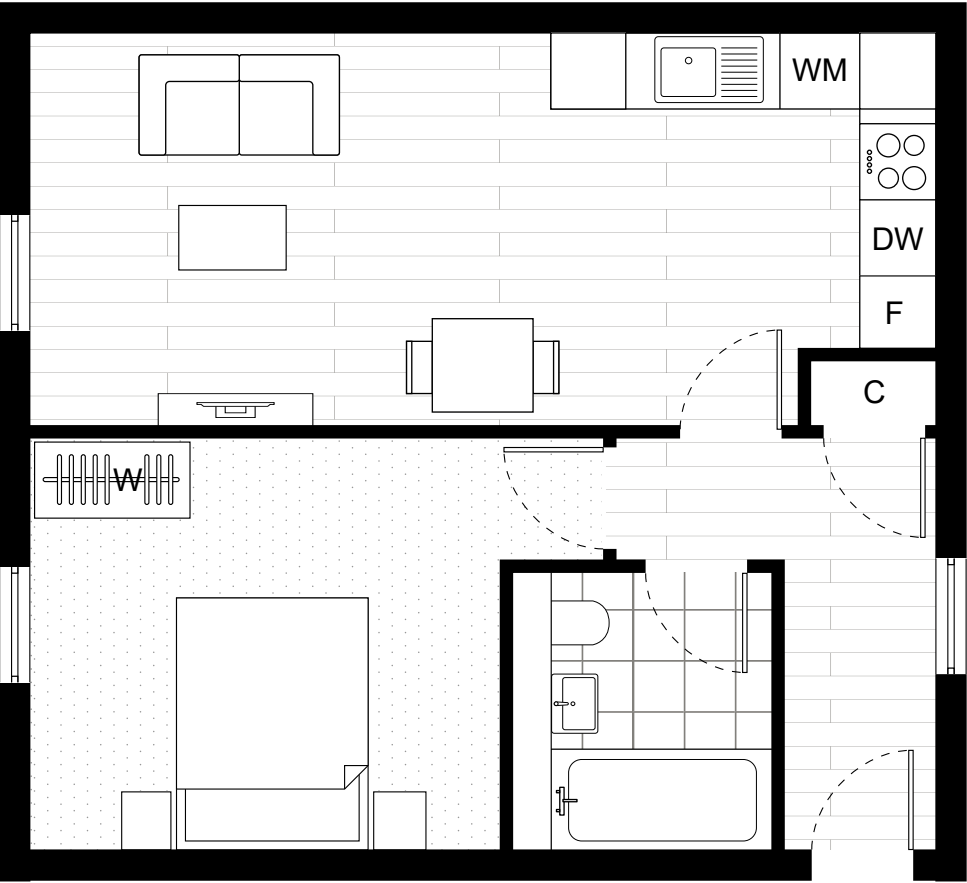
FIRST FLOOR

ONE BEDROOM

INTERNAL AREA
45.9 sq m / 494 sq ft

LIVING / DINING / KITCHEN AREA
7139 x 3106 mm

BEDROOM 1
4520 x 3520 mm



- F FRIDGE
- DW DISH WASHER
- WM WASHING MACHINE
- TD TUMBLE DRYER
- S STORAGE
- C CUPBOARD
- W WARDROBE
- B BALCONY

FLAT 4
FIRST & SECOND FLOOR

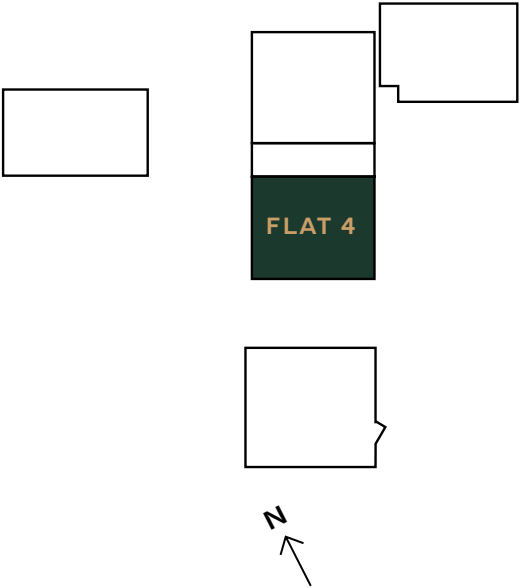
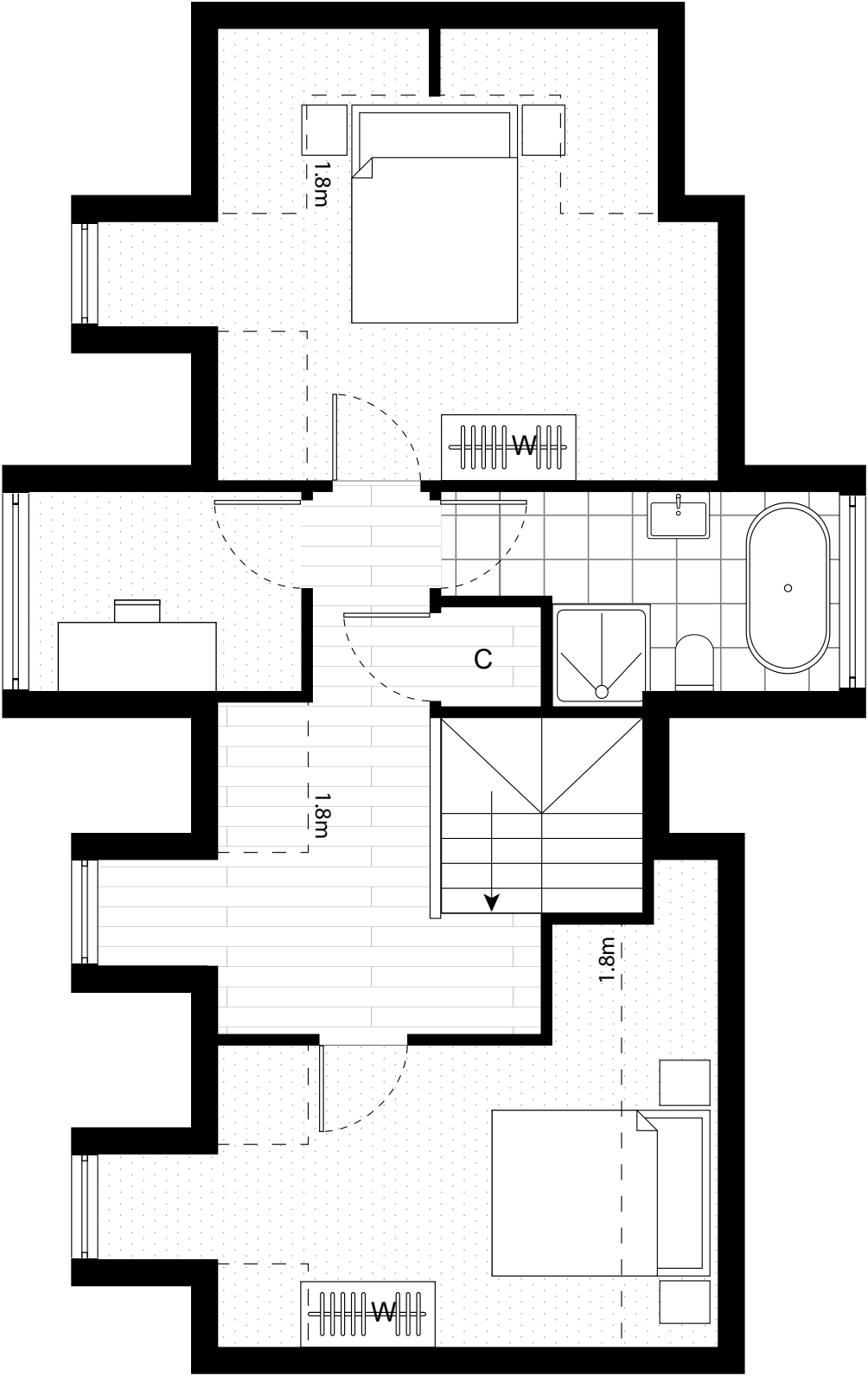
TWO BEDROOM

INTERNAL AREA
99.2 sq m / 1068 sq ft

LIVING / DINING / KITCHEN AREA
5170 x 5370 mm

BEDROOM 1
5660 x 3235 mm

BEDROOM 2
5660 x 4400 mm



- F FRIDGE
- DW DISH WASHER
- WM WASHING MACHINE
- TD TUMBLE DRYER
- S STORAGE
- C CUPBOARD
- W WARDROBE
- B BALCONY

HOUSE 1

GROUND & FIRST FLOOR

THREE BEDROOM

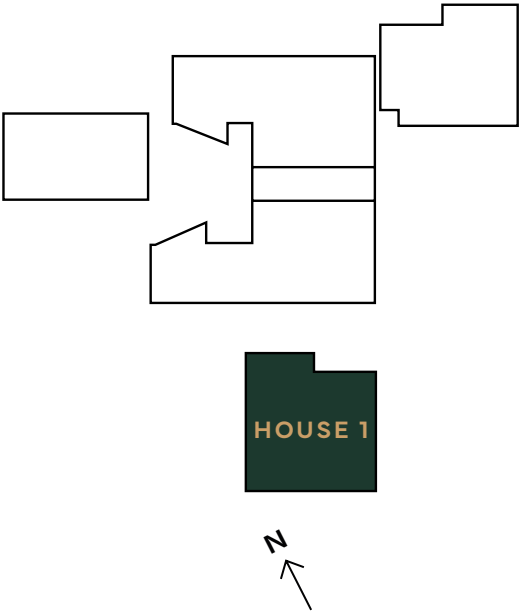
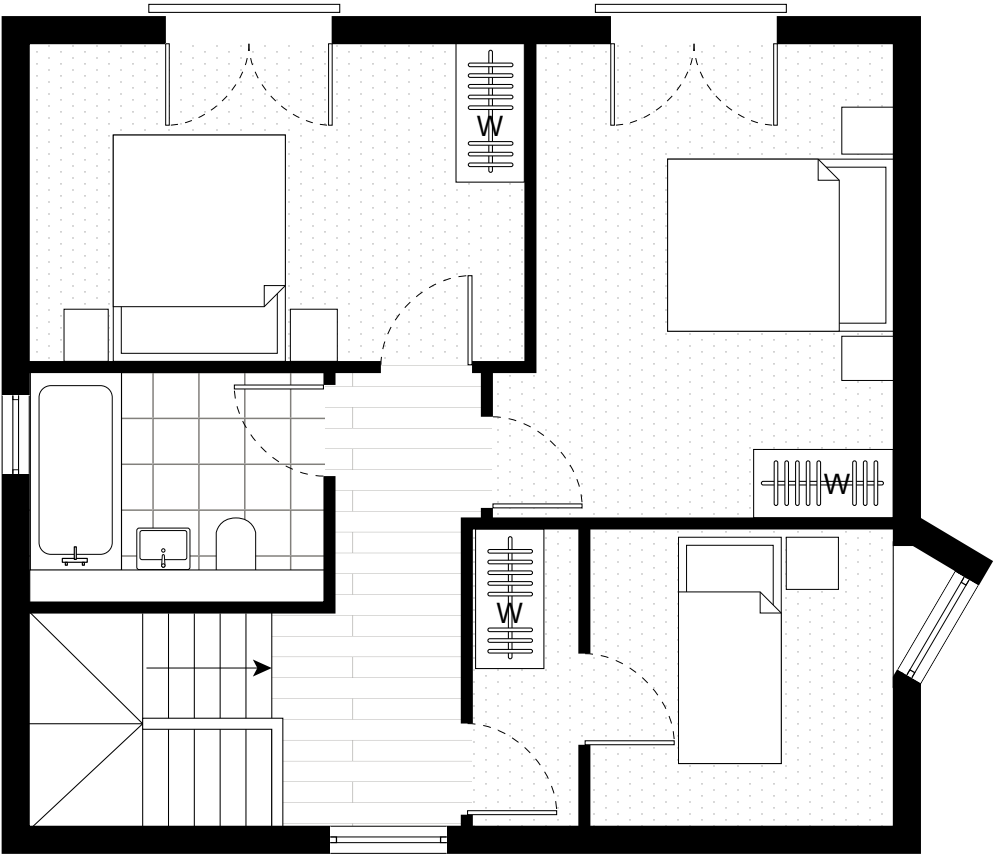
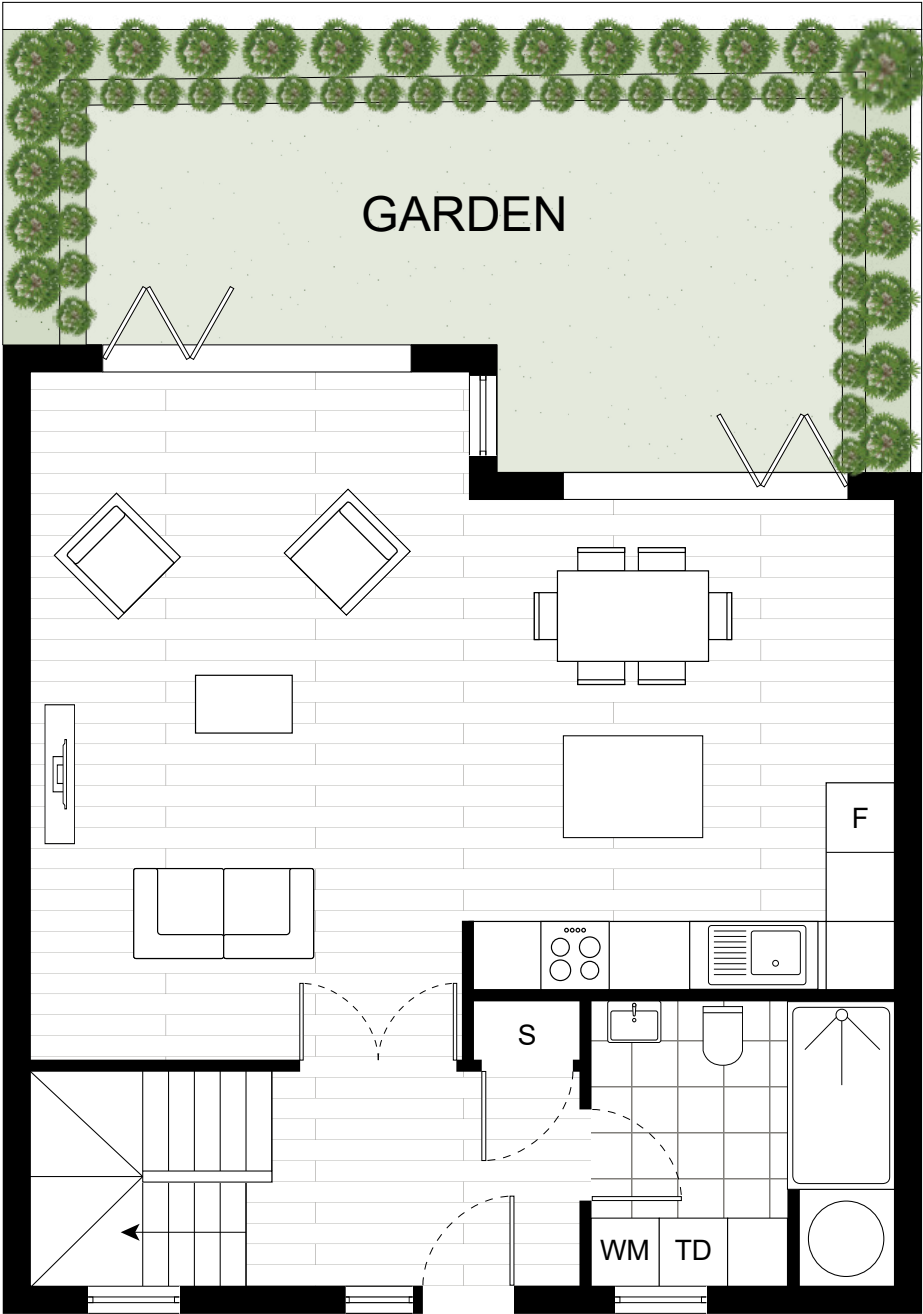
INTERNAL AREA
108.8 sq m / 1171 sq ft

LIVING / DINING / KITCHEN AREA
7560 x 4560 mm

BEDROOM 1
4340 x 2800 mm

BEDROOM 2
3510 x 4180 mm

BEDROOM 3
3690 x 2615 mm



- F FRIDGE
- DW DISH WASHER
- WM WASHING MACHINE
- TD TUMBLE DRYER
- S STORAGE
- C CUPBOARD
- W WARDROBE
- B BALCONY

HOUSE 2
GROUND & FIRST FLOOR

TWO BEDROOM

INTERNAL AREA

91.6 sq m / 986 sq ft

LIVING / DINING / KITCHEN AREA

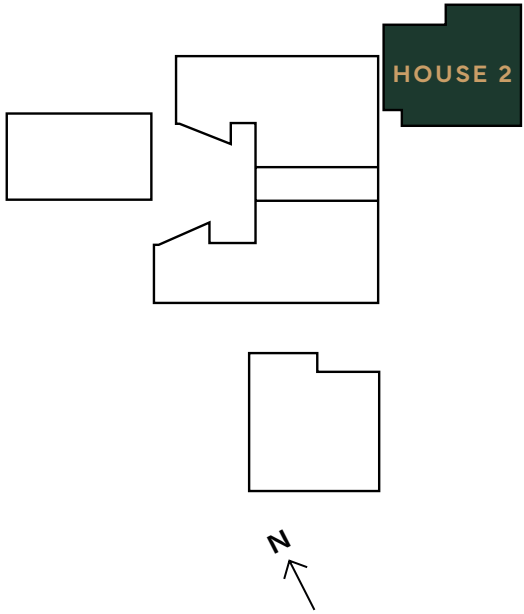
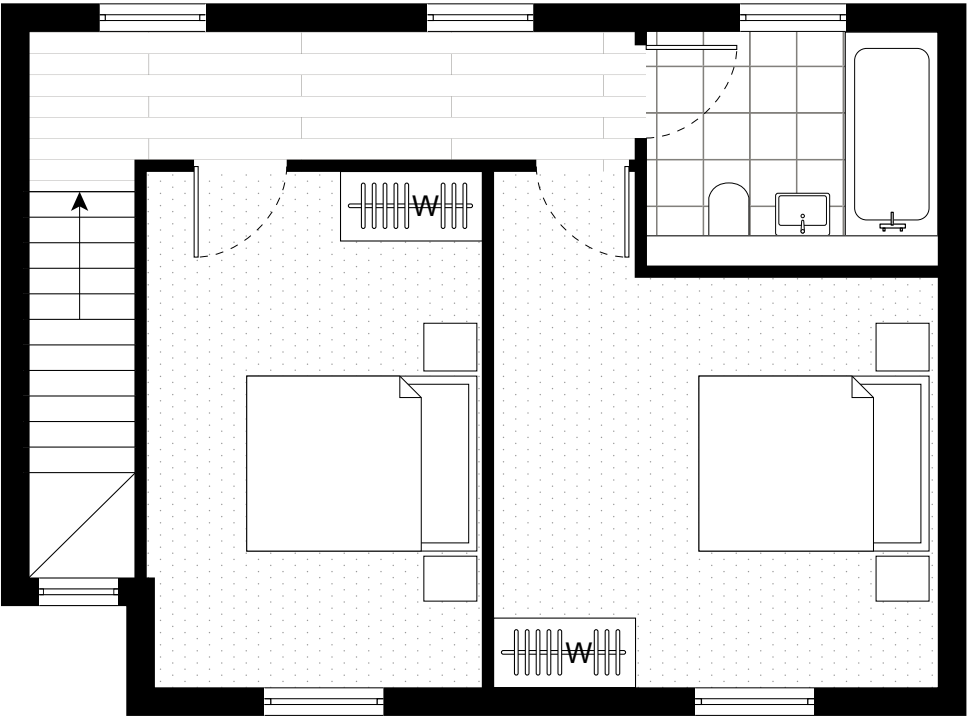
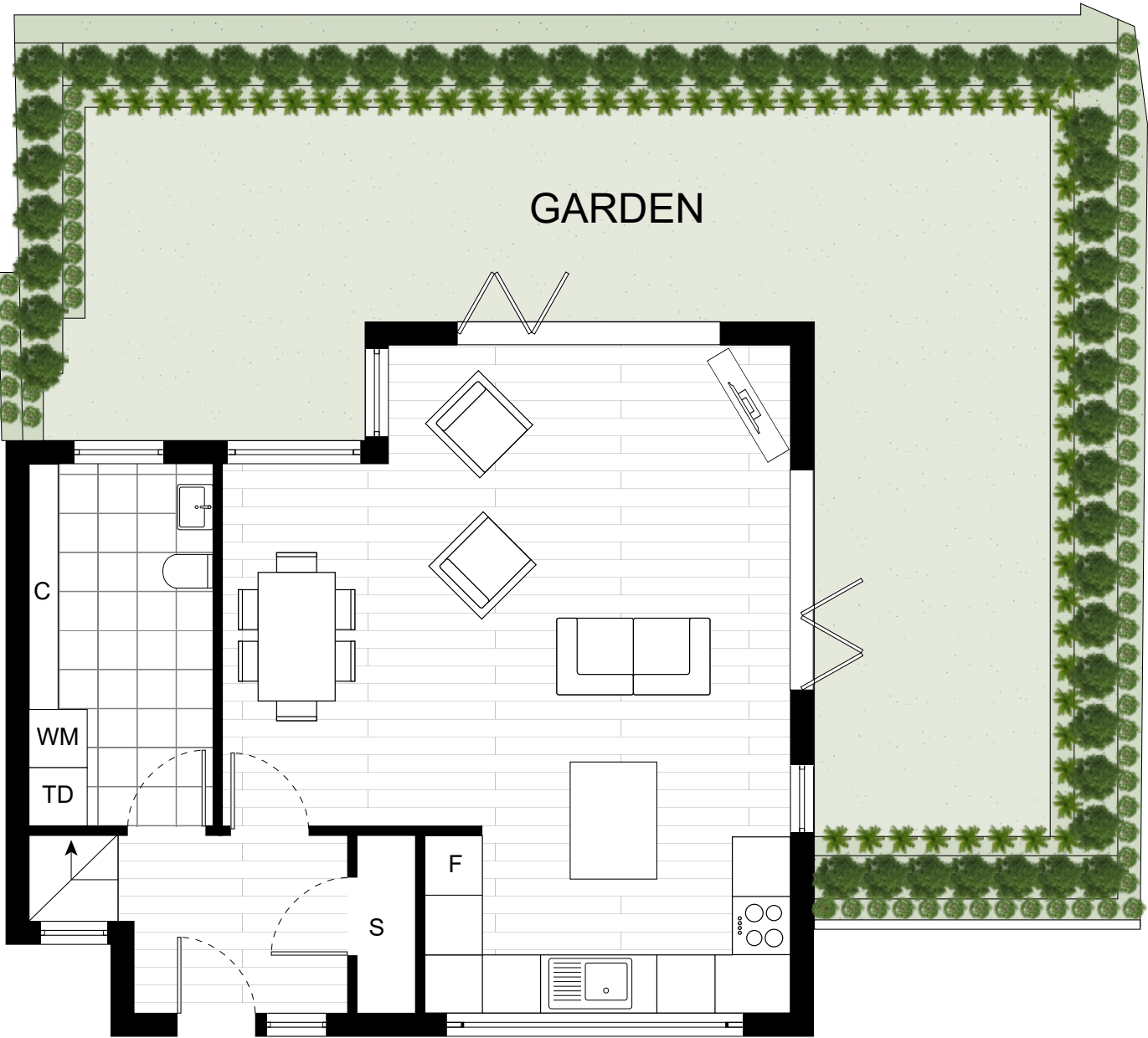
5850 x 6890 mm

BEDROOM 1

2895 x 4455 mm

BEDROOM 2

3510 x 4455 mm



- F FRIDGE
- DW DISH WASHER
- WM WASHING MACHINE
- TD TUMBLE DRYER
- S STORAGE
- C CUPBOARD
- W WARDROBE
- B BALCONY

HOUSE 3
GROUND & FIRST FLOOR

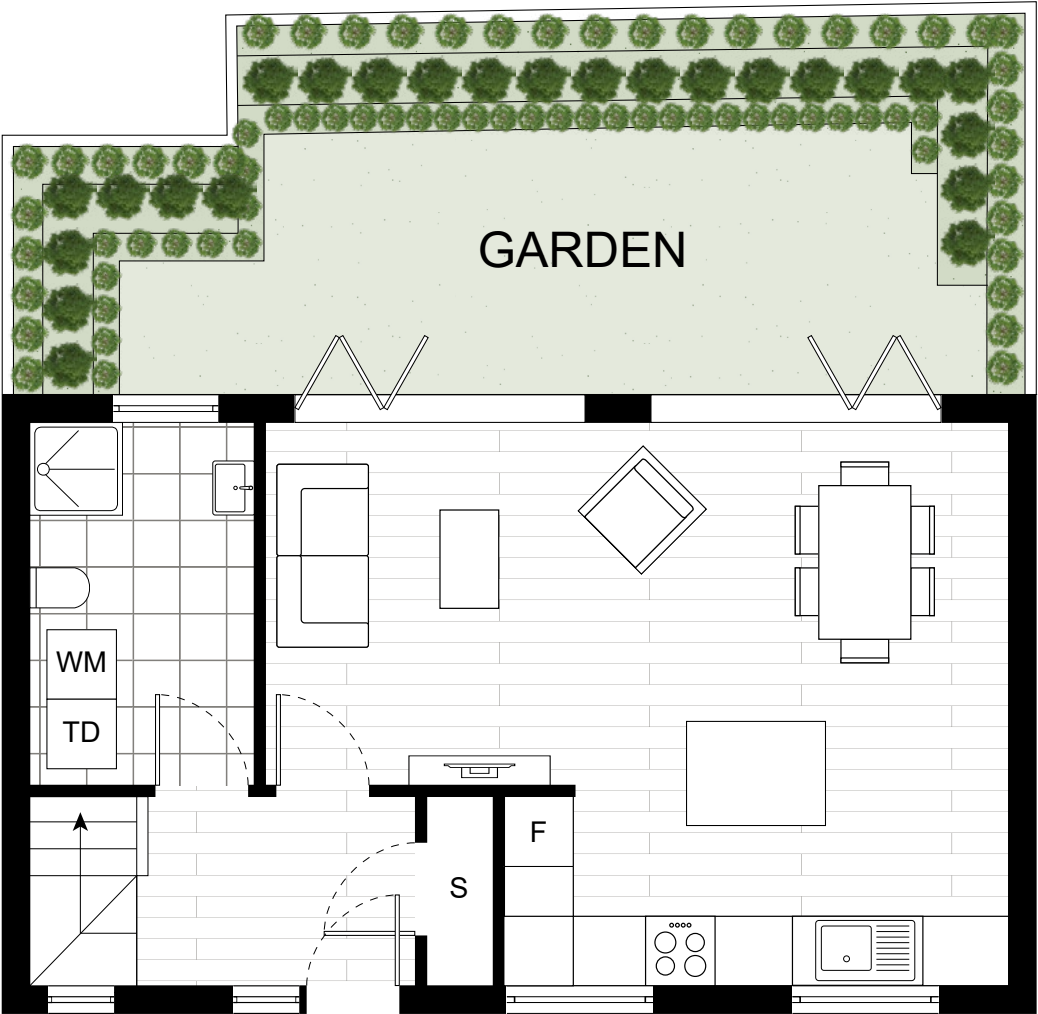
TWO BEDROOM

INTERNAL AREA
81.9 sq m / 882 sq ft

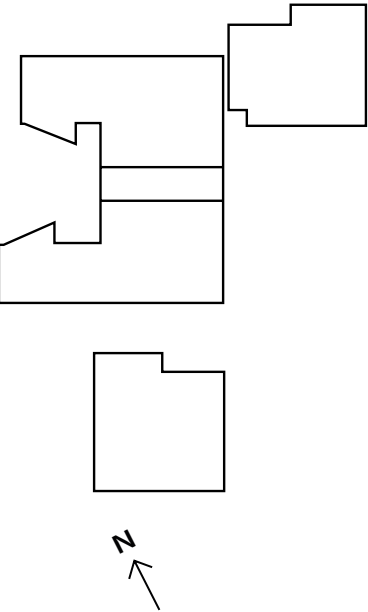
LIVING / DINING / KITCHEN AREA
6420 x 4860 mm

BEDROOM 1
3540 x 3550 mm

BEDROOM 2
3760 x 3550 mm



HOUSE 3



- F FRIDGE
- DW DISH WASHER
- WM WASHING MACHINE
- TD TUMBLE DRYER
- S STORAGE
- C CUPBOARD
- W WARDROBE
- B BALCONY

SPECIFICATIONS

KITCHENS

- Solid surface worktops
- Solid surface splash
- LED under-unit strip lighting
- Induction integrated hob
- Integrated fridge/freezer
- Integrated dishwasher
- Integrated washer/dryer (in utility cupboard where possible)
- Integrated cooker hood
- Under mounted sink
- Integrated combined microwave and oven
- Integrated oven
- Integrated microwave oven

BEDROOMS

- TV points
- Built-in wardrobes

BATHROOMS & ENSUITES

- Brushed Black sanitary ware
- Mirrored vanity cabinet and vanity base unit
- Walk-in shower with brushed black thermostatic valve
- Recessed ceiling down lighters
- Brushed black heated ladder towel rail
- Free standing bath with brushed brass single lever wall mounted bath mixer tap (apartment 4 only)

ELECTRICAL AV, TELEPHONE & DATA

- BT points (master bedroom and bedrooms)
- Digital TV/satellite
- FM and DAB radio
- Virgin (living rooms)
- 4 DSSO sockets with USB connection (master bedroom)

LIGHTING

- Black dimmer switches/spurs throughout
- Down lights throughout
- Feature spot lighting (kitchen)
- Recessed ceiling down lighters and wall lights (bathrooms and en-suites)

WALL & FLOOR FINISHES

- Stone tiled walls
- Stone flooring
- Oak engineered wood flooring (living, hallways and kitchen)
- 100% wool carpet to bedrooms

SAFETY, SECURITY & COMFORT

- Audio and video entry system with integrated doorbell connected to phone app
- Black Aluminium front door with 5 lever mortice deadlocks
- Underfloor heating to all living areas
- Thermostat with the facility to operate from phone application (master, bedrooms, halls)
- Bi-fold Doors





ARTHUR MEWS



New Homes Broker Team
020 3826 0673
newhomes@knightfrank.com

www.knightfrank.com

Redfinch Investments Ltd
info@redfinchinvest.com