



Weir Road, SW12

£3,900 PCM

A spacious semi-detached four bedroom house. This stylish property comes with a private rear garden and is suitable for families only.

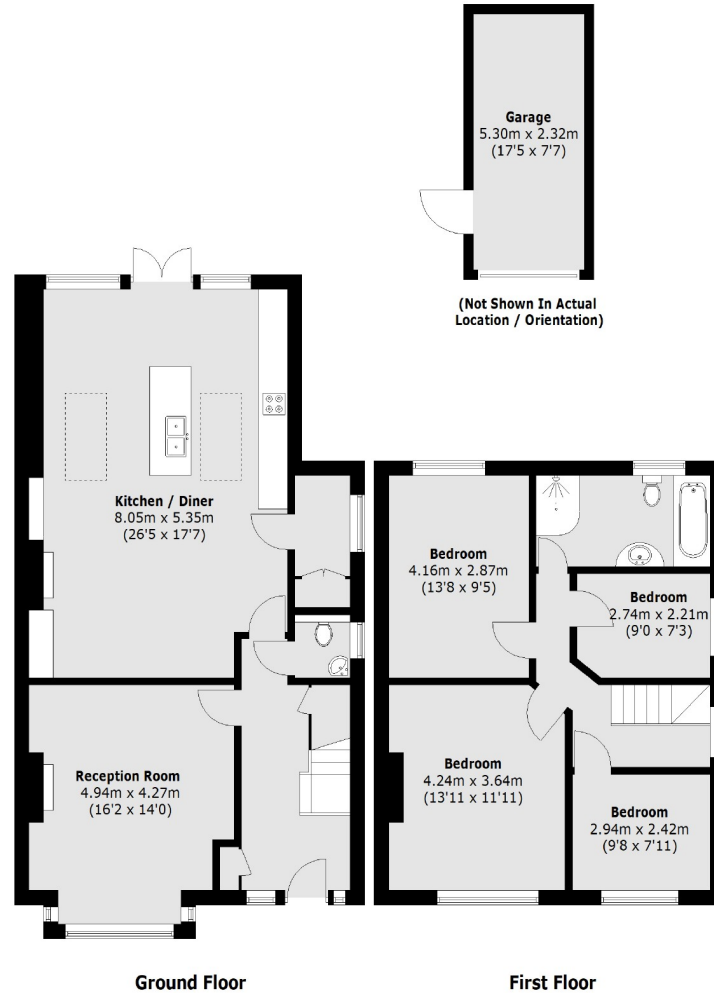
- Semi-Detached House
- Open Plan Reception
- Four Bedrooms
- Modern Fitted Bathroom
- Private Garden
- Furnished

For further information on the costs associated with renting a property, please pop into our office or visit our website.



Situated on Weir Road, this property is within close proximity to Balham Town Centre and Clapham South which have excellent facilities to offer including transport links and many trendy bars and restaurants.





Total area (approx.): 137.1 sq. m (1,475.7 sq. ft)
Garage area: 12.2 sq. m (131.3 sq. ft)

Jacksons Balham
8-11 Balham Station Road
London
SW12 9SG
020 8675 6565
balham.lettings@jacksonsestateagents.com

Energy Rating: D We aim to make our particulars both accurate and reliable. However they are not guaranteed; nor do they form part of an offer or contract. If you require clarification on any points then please contact us, especially if you're traveling some distance to view. Please note that appliances and heating systems have not been tested and therefore no warranties can be given as to their good working order.