



WESTBOURNE GROVE, W11

£3,462 per week (£15,000 per month)

Four bedrooms
Three bathrooms
Excellent entertaining space
High ceilings
South facing garden
Highly desirable location

@marshandparsons
marshandparsons.co.uk

MARSH &
PARSONS

ABOUT THE PROPERTY

A sensational four-bedroom family house set on one of Notting Hill's most prestigious addresses, moments from the fashionable amenities of Westbourne Grove.

Ideally located in the heart of Notting Hill, the house is surrounded by a superb selection of boutique shops, artisan cafés, and renowned restaurants along Westbourne Grove and nearby Portobello Road. Excellent transport links are within easy walking distance at Notting Hill Gate station, providing access to the Central, Circle, and District lines, while the beautiful open green spaces of Hyde Park and Kensington Gardens are also close by.







FURTHER DETAILS

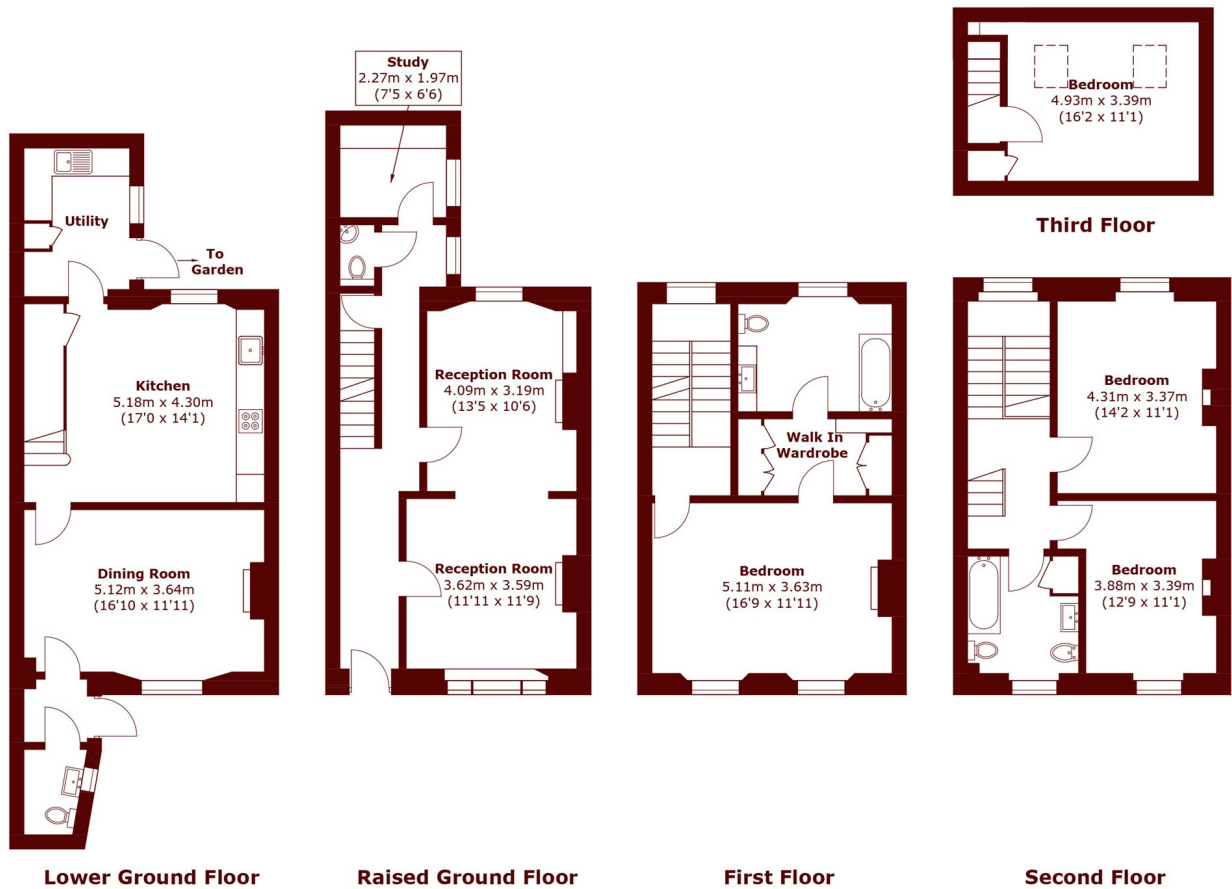
Offering exceptional proportions, elegant period features, and superb entertaining space, this outstanding home is beautifully presented throughout.

The property comprises four spacious double bedrooms, three contemporary bathrooms, and an impressive double reception room featuring high ceilings, attractive wooden flooring, and a charming period fireplace. A substantial kitchen and dining area with bespoke integrated appliances creates the perfect space for entertaining and modern family living.

Further benefits include a stunning south-facing private garden, excellent natural light throughout, and an



STEP INSIDE WESTBOURNE GROVE



Total area (approx.): 200.5 sq. m (2,158.1 sq. ft)

Notting Hill
020 7313 6910

Energy Rating: E We aim to make our particulars both accurate and reliable. However, they are not guaranteed; nor do they form part of an offer or contract. If you require clarification on any points then please contact us, especially if you're traveling some distance to view. Please note that appliances and heating systems have not been tested and therefore no warranties can be given as to their good working order

MARSH &
PARSONS