

## 15 Wheatstone Gardens Notting Hill

**£775 Per Week**

A well-presented two bedroom apartment available to rent unfurnished. This attractive home has been thoughtfully designed to maximise natural light and space throughout. The apartment features a contemporary open-plan living area with a fully integrated kitchen fitted with high-specification appliances, and bespoke built-in storage seamlessly incorporated into the design.

The two double bedrooms are fitted with built in wardrobes, and the sleek bathroom is finished to a high standard. The property further benefits from a private balcony. Parking is available by separate negotiation.

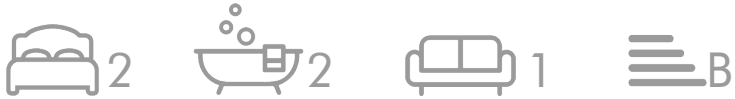
Ideally located in the heart of Notting Hill, Wheatstone Gardens is a modern residential development set moments from the vibrant Portobello Road. Residents benefit from excellent transport connections, with Ladbroke Grove and Westbourne Park stations within easy reach, as well as an array of local cafés, shops and green spaces nearby. This apartment offers an excellent base from which to enjoy West London living.

Council Tax Band: E – Kensington & Chelsea  
Minimum contract: 12 months  
Change of contract fee: £50 including VAT  
Lift access  
Holding Deposit: £775 1 week's rent (subject to agreed offer)

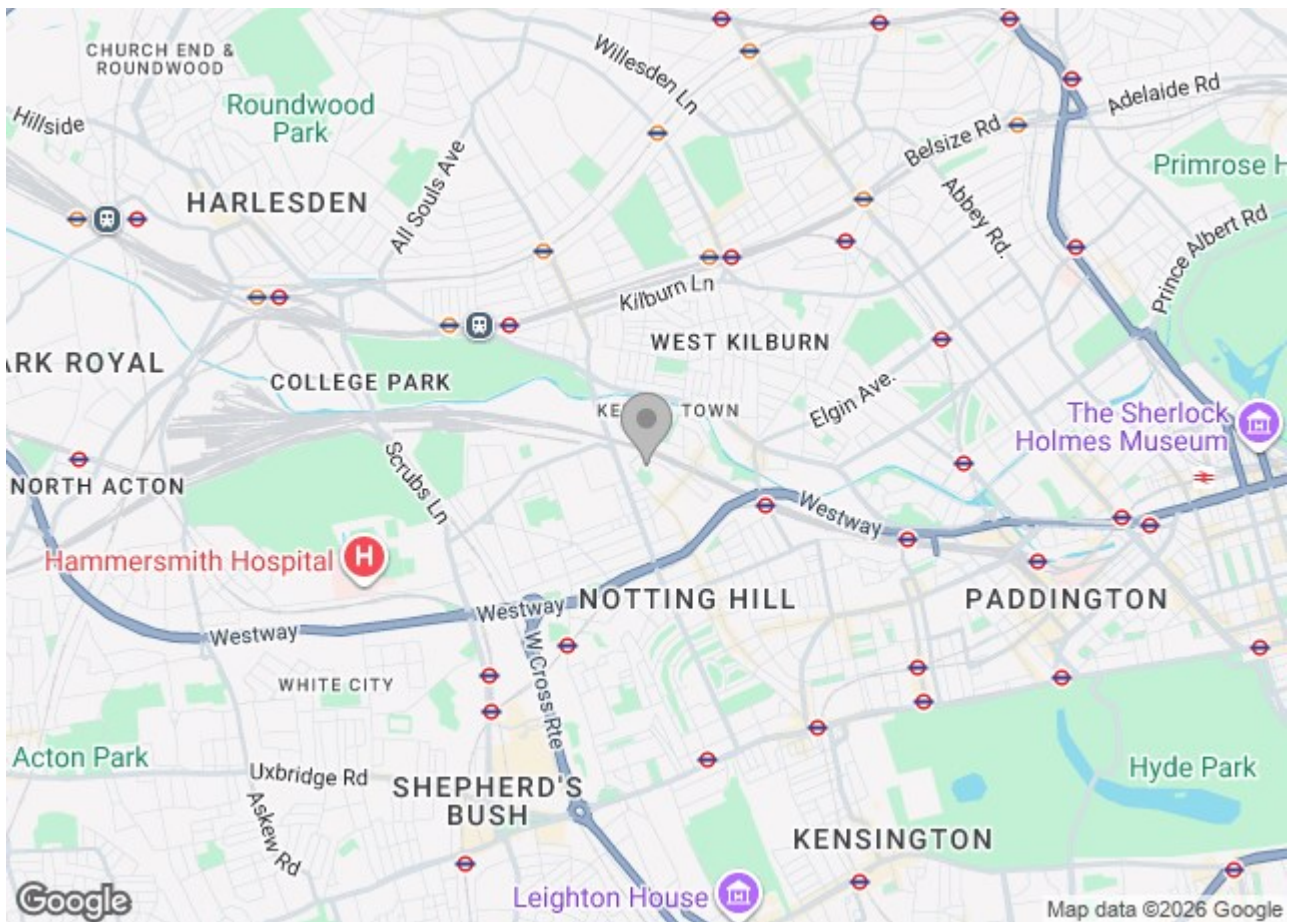
Electricity supply – Mains | Cold water supply – Mains | Sewerage – Mains | Hot water & heating – Communal | Internet: FTTP | Parking is available by separate negotiation

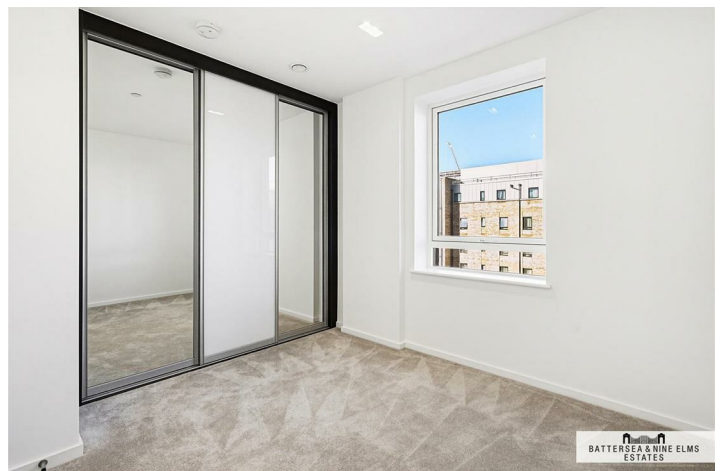
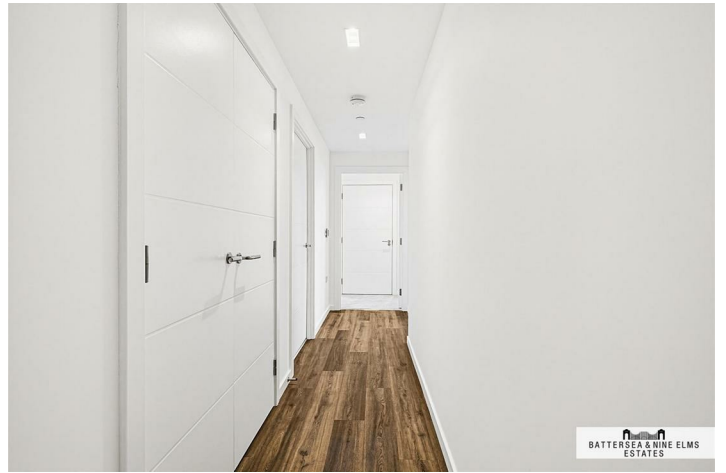
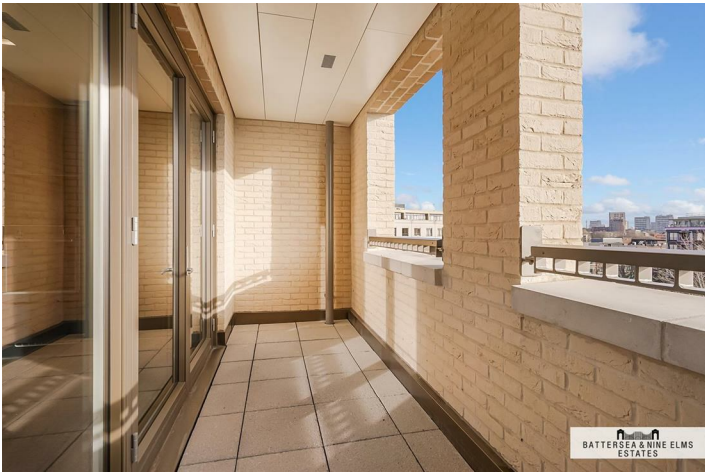
To check broadband and mobile phone coverage please visit Ofcom.  
To check planning permission please visit the Royal Borough of Kensington and Chelsea Planning Portal.

# 15 Wheatstone Gardens Notting Hill

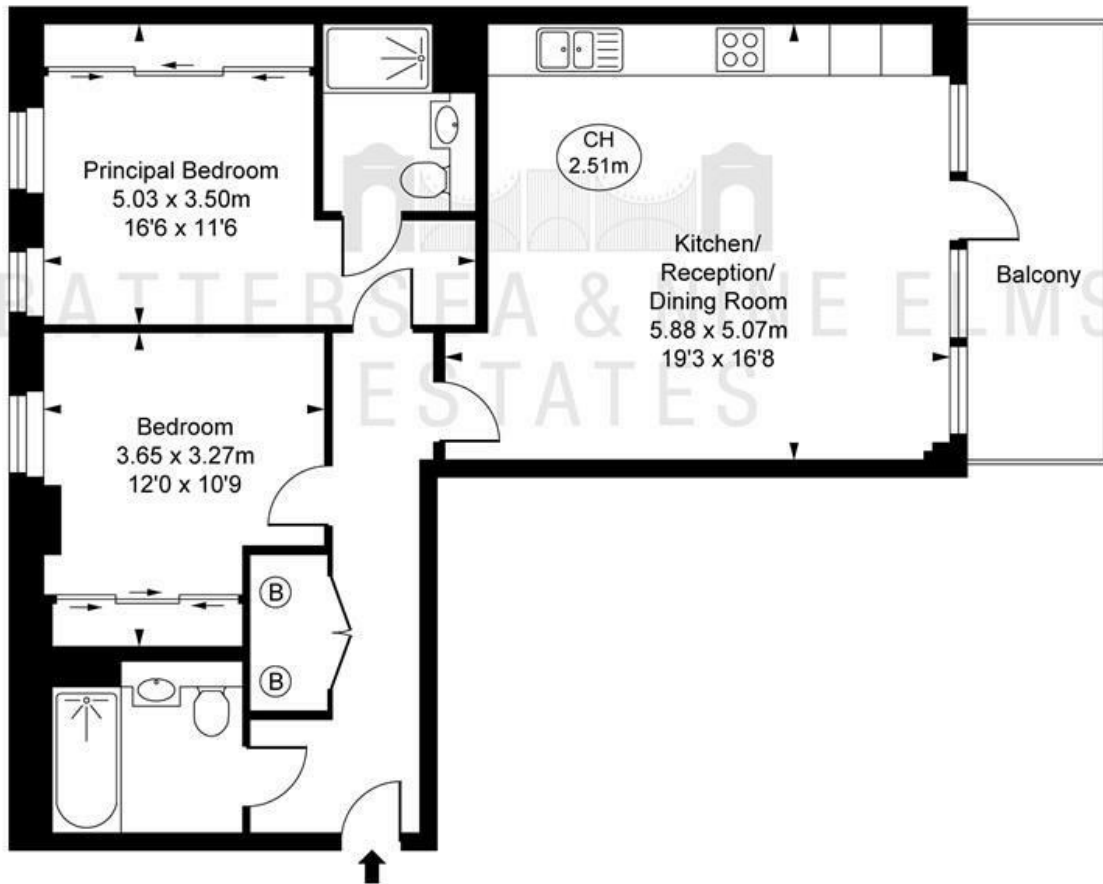


- Two double bedrooms
- Two bathrooms (one en-suite)
- Private balcony
- Open plan kitchen/living area





Wheatstone Gardens,  
 Notting Hill, W10  
 Approximate Gross Internal Area  
 72.34 sq m / 779 sq ft  
 ( CH = Ceiling Heights )



This plan is not to scale. It is for guidance and not for valuation purposes.  
 All measurements and areas are approximate only, and have been prepared in accordance with the current edition of the RICS Code of Measuring Practice.  
 © Fulham Performance

These particulars, whilst believed to be accurate are set out as a general outline only for guidance and do not constitute any part of an offer or contract. Intending purchasers should not rely on them as statements of representation of fact, but must satisfy themselves by inspection or otherwise as to their accuracy. No person in this firm's employment has the authority to make or give any representation or warranty in respect of the property.

