



Claremont Road, NW2

£415 Per week

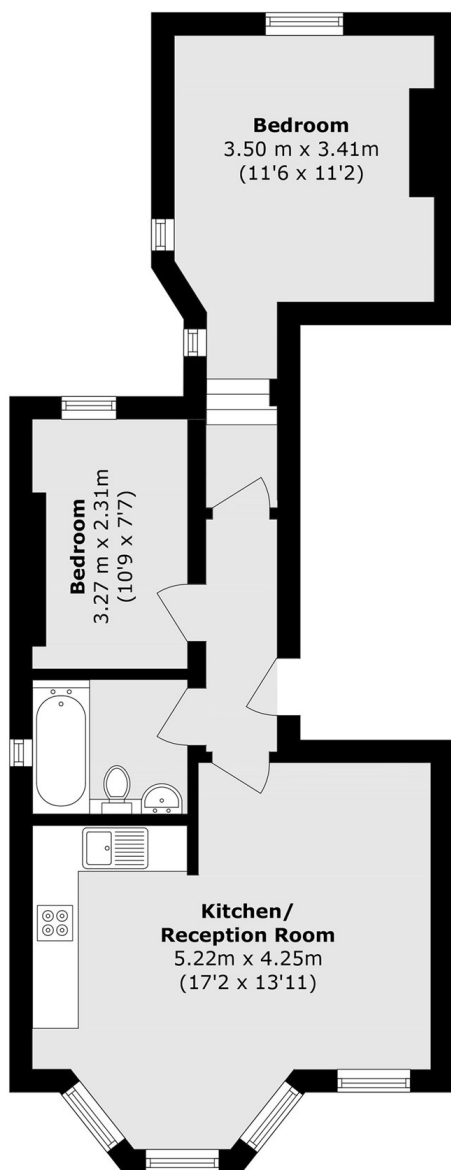
This newly decorated first floor two bedroom flat is ideally situated in the heart of Cricklewood. The flat has as an open plan living area with a modern kitchen, two double bedrooms, a fully tiled bathroom and well maintained communal garden.

Claremont Road is well located close to Cricklewood Station (Thameslink), Cricklewood Broadway with a range of local amenities, restaurants, cafés, Brent Cross, and excellent transport and motorway links.

Features

- Two Bedrooms
- Open Plan
- Tiled Bathroom
- Wood Floors
- Communal Grounds
- Cricklewood Station

Claremont Road,
London, NW2



Total area (approx.): 50.9 sq. m (547.8 sq. ft)