



## Milton Park, N6

£550,000

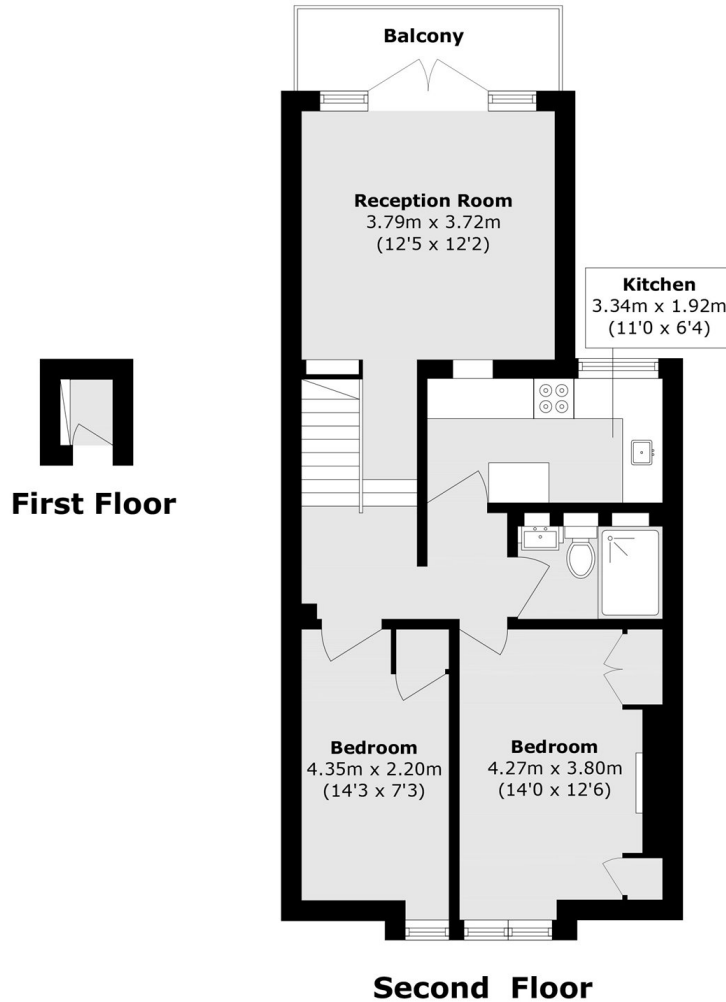
A well-presented two bedroom split level converted apartment on the top floor of an attractive period building with the rare advantage of a balcony overlooking Parkland Walk.

Situated in the highly sought after 'Miltons' enclave and close to the Parkland Walk environmental trail. Highgate Northern line underground is just 0.5 miles away.

### Features

- Second Floor (Top)
- Two Bedrooms
- Reception Room
- Separate Kitchen
- Shower Room
- Balcony

# Milton Park, London, N6



Total area (approx.): 58.6 sq. m (630.8 sq. ft)  
Balcony area (approx.): 4.8 sq. m (51.7 sq. ft)