



Elliot Heath
ESTATE AGENTS

23 Watton Road, Ware
In Excess of **£475,000**

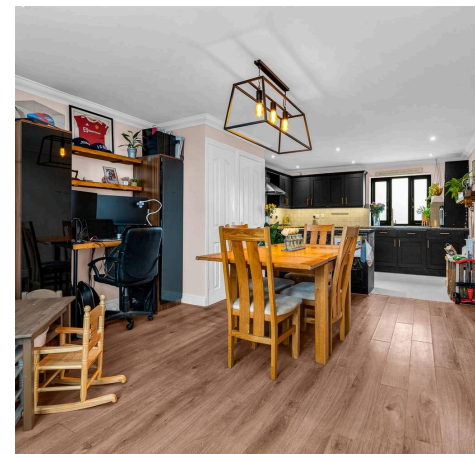
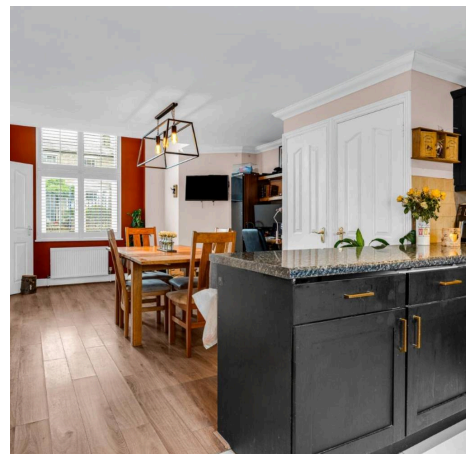
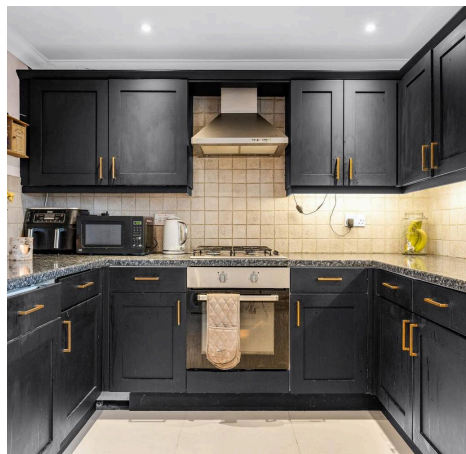
23 Watton Road

Ware, Ware

Stylish two/three-bedroom home in a Victorian maltings conversion in Ware town centre. Character features, open plan living, residents' parking and easy access to London.

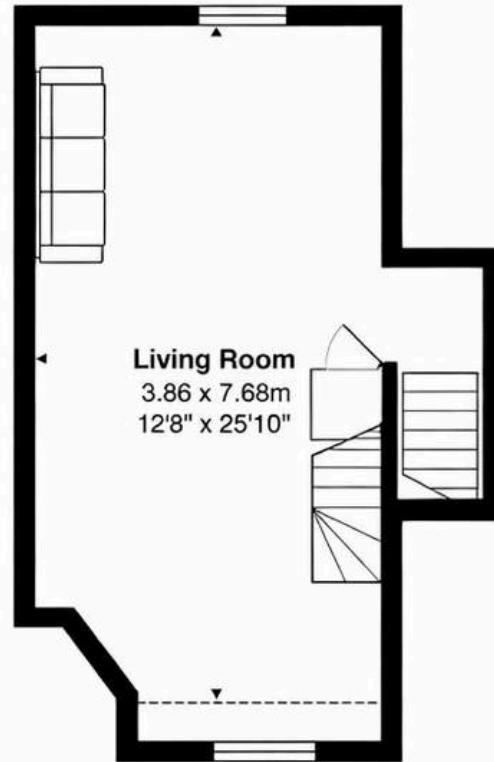
Council Tax band: D

Tenure: Share of Freehold

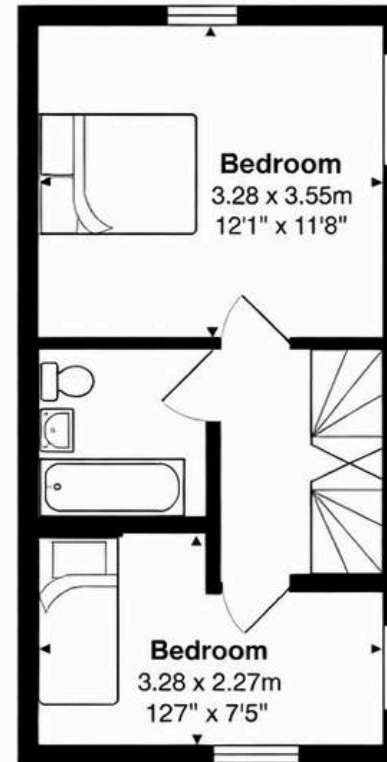




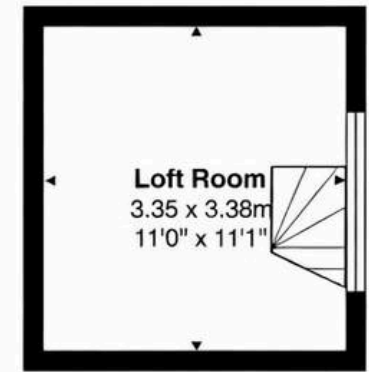
Ground Floor
Area: 34.9 m² ... 375 ft²



First Floor
Area: 31.8 m² ... 342 ft²



Second Floor
Area: 30.8 m² ... 332 ft²



Third Floor
Area: 11.3 m² ... 122 ft²

Total Area: 108.8 m² ... 1171 ft²

Accommodation

Private front entrance door to:

Entrance Lobby

With stairs rising to the first floor landing, radiator, wood flooring, door to kitchen/dining room and door to :

Downstairs WC

Fitted with a suite comprising low flush wc, vanity unit with wash hand basin, wood flooring, radiator, extractor fan.

Kitchen/Dining Room

12' 8" x 9' 1" (3.86m x 2.78m)

Dining Room

With double height window to front aspect with fitted shutters, wood flooring, two built in storage cupboards, radiator, open to:

Kitchen

With window to rear aspect. Beautifully fitted with a range of wall and base storage units with work surface over incorporating a sink and drainer unit, integrated appliances, tiled splash back areas, tiled flooring, radiator.

First Floor Landing

With radiator, open to:

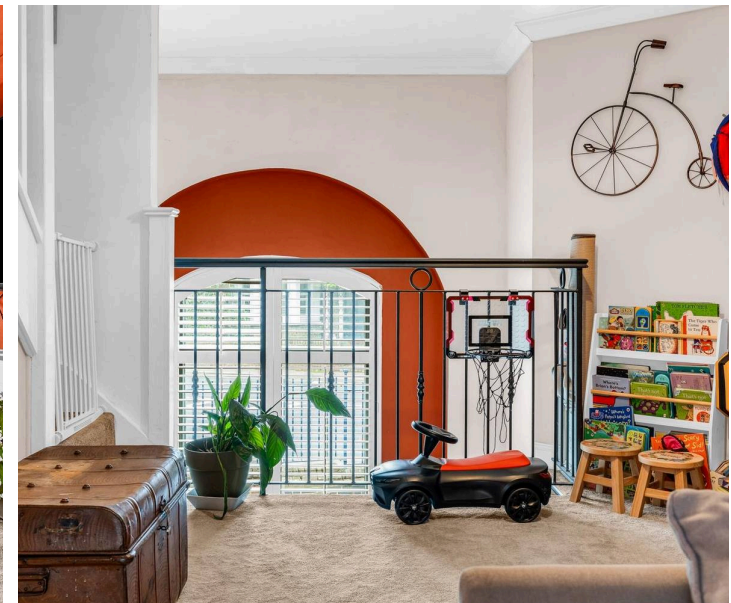
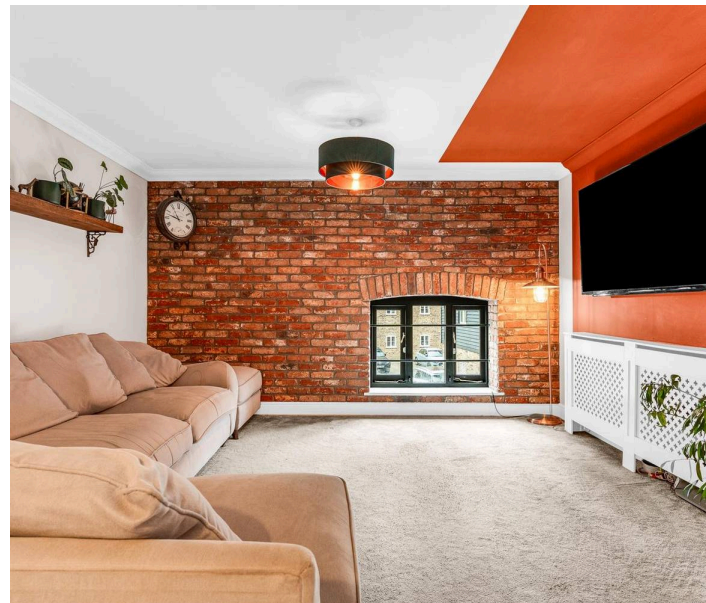
Galleried Living Room

12' 8" x 25' 2" (3.86m x 7.68m)

With window to rear aspect, large understairs storage cupboard, original beams and exposed brickwork, mezzanine overlooking the ground floor, radiator, stairs rising to:

Second Floor Landing

With stairs rising to the loft room and doors to:



Bedroom One

10' 9" x 11' 8" (3.28m x 3.55m)

Dual aspect with windows to rear and side aspect with fitted shutters, radiator, wood flooring, original timbers and exposed brick work.

Bedroom Two

10' 9" x 7' 5" (3.28m x 2.27m)

Dual aspect with windows to front and side aspect with fitted shutters, radiator, original timbers.

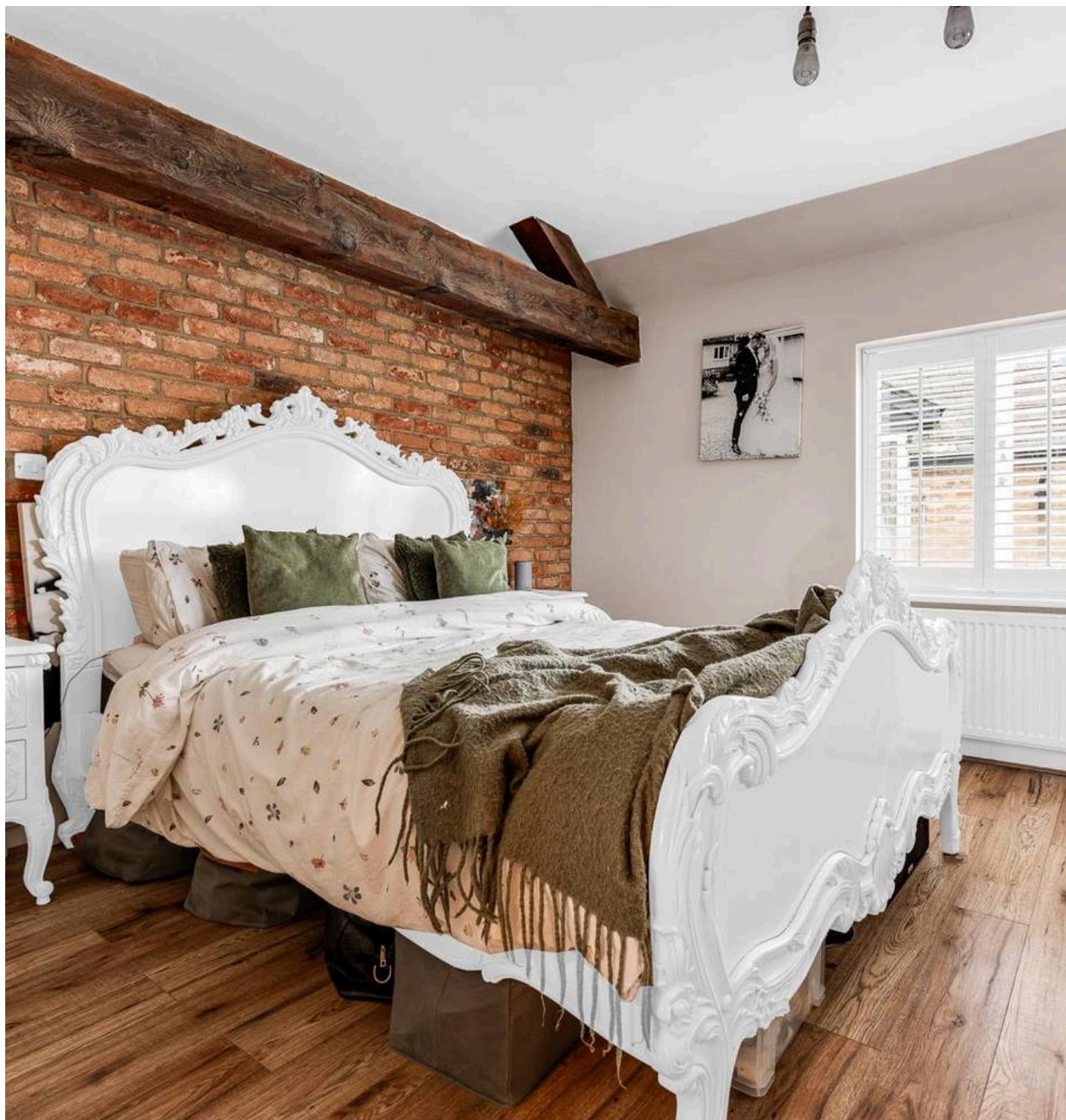
Bathroom

Fitted with a suite comprising panel enclosed bath with shower over and glass screen, dual flush wc, pedestal wash hand basin, fully tiled, radiator, extractor fan.

Loft Room

11' 0" x 11' 1" (3.35m x 3.38m)

With window to side aspect, access to eaves storage.





ALLOCATED PARKING

2 Parking Spaces

Allocated parking for two vehicles.







Elliot Heath Estate Agents

Elliot Heath Estate Agents, 7 Star Street - SG12 7AA

01920 29 33 33

hello@elliotheath.co.uk

elliotheath.co.uk