



Connells

Augusta Drive  
Hockley



### Property Description

Set within the highly sought-after Bullwood Hall estate, this beautifully presented three-bedroom home offers well-designed living in a unique woodland setting. Surrounded by Hockley Woods, the property combines peaceful surroundings with everyday convenience.

The home features three double bedrooms, including a principal bedroom with en-suite and fitted wardrobes, along with versatile space ideal for family living, guests, or a home office. Bright and spacious living and dining areas provide an excellent setting for relaxing or entertaining, complemented by a well-equipped kitchen. A family bathroom and additional W/C complete the layout.

Externally, there is a driveway to the rear of the property providing parking for two vehicles, along with access to a private children's play area. The property also benefits from direct access to Hockley Woods, just a short walk from the front door.

Set within the highly sought-after Bullwood Hall estate, this beautifully presented three-bedroom home offers well-designed living in a unique woodland setting. Surrounded by Hockley Woods, the property combines peaceful surroundings with everyday convenience.

The home features three double bedrooms, including a principal bedroom with en-suite and fitted wardrobes, along with versatile space ideal for family living, guests, or a home office. Bright and spacious living and dining areas provide an excellent setting for relaxing or entertaining, complemented by a well-equipped kitchen. A family bathroom and additional W/C complete the layout.

Externally, there is a driveway to the rear of

the property providing parking for two vehicles, along with access to a private children's play area. The property also benefits from direct access to Hockley Woods, just a short walk from the front door.

Set within the highly sought-after Bullwood Hall estate, this beautifully presented three-bedroom home offers well-designed living in a unique woodland setting. Surrounded by Hockley Woods, the property combines peaceful surroundings with everyday convenience.

The home features three double bedrooms, including a principal bedroom with en-suite and fitted wardrobes, along with versatile space ideal for family living, guests, or a home office. Bright and spacious living and dining areas provide an excellent setting for relaxing or entertaining, complemented by a well-equipped kitchen. A family bathroom and additional W/C complete the layout.

Externally, there is a driveway to the rear of the property providing parking for two vehicles, along with access to a private children's play area. The property also benefits from direct access to Hockley Woods, just a short walk from the front door.

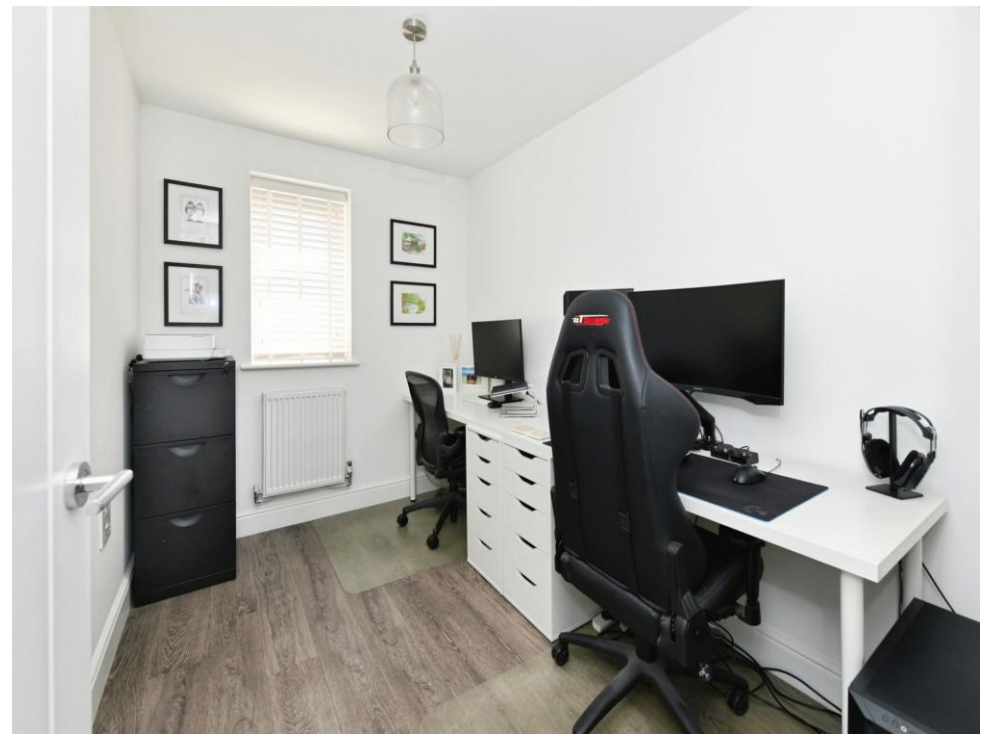
Set within the highly sought-after Bullwood Hall estate, this beautifully presented three-bedroom home offers well-designed living in a unique woodland setting. Surrounded by Hockley Woods, the property combines peaceful surroundings with everyday convenience.

The home features three double bedrooms, including a principal bedroom with en-suite and fitted wardrobes, along with versatile space ideal for family living, guests, or a home office. Bright and spacious living and dining areas provide an excellent setting for

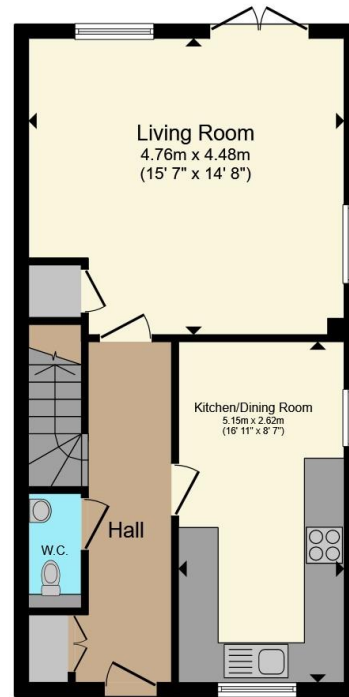
relaxing or entertaining, complemented by a well-equipped kitchen. A family bathroom and additional W/C complete the layout.

Externally, there is a driveway to the rear of the property providing parking for two vehicles, along with access to a private children's play area. The property also benefits from direct access to Hockley Woods, just a short walk from the front door.

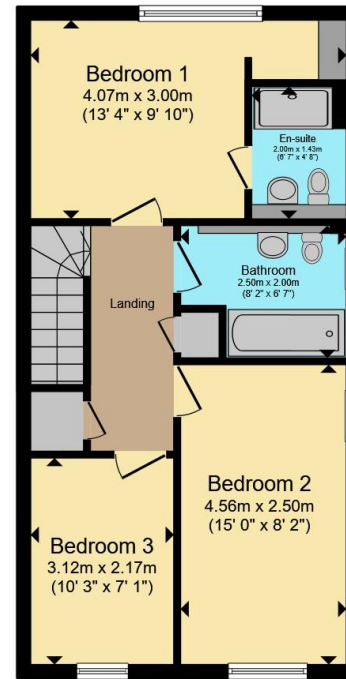








**Ground Floor**



**First Floor**

Total floor area 92.6 m<sup>2</sup> (997 sq.ft.) approx

This floor plan is for illustrative purposes only. It is not drawn to scale. Any measurements, floor areas (including any total floor area), openings and orientation are approximate. No details are guaranteed, they cannot be relied upon for any purpose and they do not form part of any agreement. No liability is taken for any error, omission or misstatement. A party must rely upon its own inspection(s). Powered by [www.propertybox.io](http://www.propertybox.io)



To view this property please contact Connells on

**T 01268 777 767**  
**E [rayleigh@connells.co.uk](mailto:rayleigh@connells.co.uk)**

113-115 High Street  
RAYLEIGH SS6 7QA

EPC Rating: B Council Tax  
Band: D

Tenure: Freehold

**view this property online [connells.co.uk/Property/RAY309134](http://connells.co.uk/Property/RAY309134)**



1. MONEY LAUNDERING REGULATIONS Intending purchasers will be asked to produce identification documentation at a later stage and we would ask for your co-operation in order that there will be no delay in agreeing the sale. 2. These particulars do not constitute part or all of an offer or contract. 3. The measurements indicated are supplied for guidance only and as such must be considered incorrect. Potential buyers are advised to recheck measurements before committing to any expense. 4. We have not tested any apparatus, equipment, fixtures, fittings or services and it is in the buyers interest to check the working condition of any appliances.

Connells Residential is registered in England and Wales under company number 1489613, Registered Office is Cumbria House, 16-20 Hockliffe Street, Leighton Buzzard, Bedfordshire, LU7 1GN. VAT Registration Number is 500 2481 05.

**See all our properties at [www.connells.co.uk](http://www.connells.co.uk) | [www.rightmove.co.uk](http://www.rightmove.co.uk) | [www.zoopla.co.uk](http://www.zoopla.co.uk)**

Property Ref: RAY309134 - 0004