



## Thornbury Road, SW2

£550,000

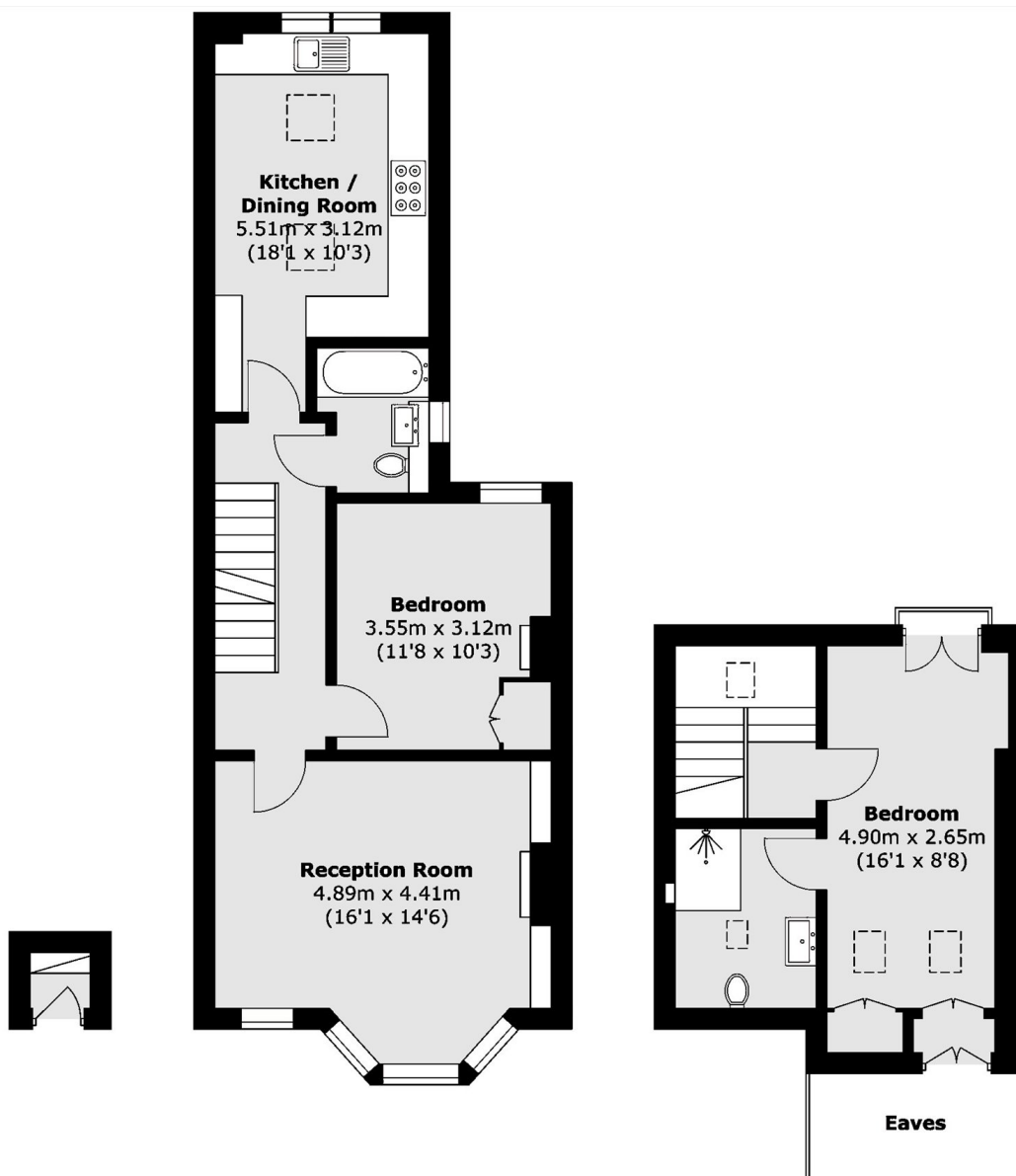
OFFERS IN EXCESS OF This exceptional split-level period conversion extends to an impressive 937 sq ft, offering naturally light-filled, beautifully proportioned, and exquisitely arranged living and entertaining spaces throughout. The residence features a generous reception room with a charming bay window and bespoke alcove cabinetry, a meticulously appointed kitchen/breakfast room, two elegant double bedrooms, and two sophisticated bathrooms.

Thornbury Road is a quiet residential street within easy reach of Clapham and Brixton. Clapham Common/Clapham North (Northern Line) and Brixton (Victoria Line and National Rail) Underground Stations are within close proximity. Abbeville Village is also located a short walk away with many local shops, restaurants and cafés.

### Features

- Split Level Period Conversion
- Reception Room
- Separate Kitchen
- Two Double Bedrooms
- Two Bathrooms
- Share Of Freehold

# Thornbury Road, London, SW2



**Ground Floor**

**First Floor**

**Second Floor**

Total area (approx.): 87.1 sq. m (937.5 sq. ft)  
(Excluding Eaves)