



## Lexham Gardens, W8

£395 Per week

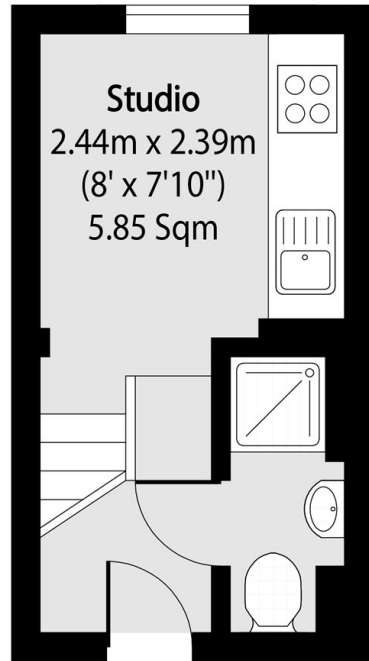
A bright self contained studio with situated on the first and second floor of a Victorian building with a open plan kitchen and wood flooring throughout.

Lexham Gardens is a premier street in Kensington, within close proximity to High Street Kensington, Hyde Park, Gloucester Road and Earl's Court tube stations, with easy access to the A4 and central London.

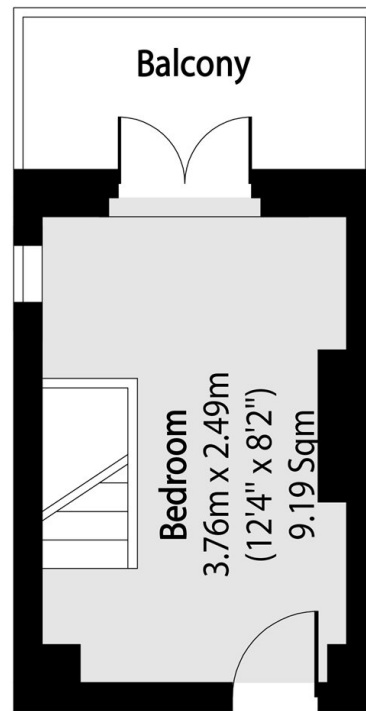
### Features

- Studio
- Split Level
- Open Plan
- Self Contained
- Wood Floors
- Period Building

# Lexham Gardens, London, W8



First Floor



Second Floor

Total area (approx): 20.81 sq m (224 sq. ft)

Balcony total area (approx): 3.34 sq m (36 sq. ft)