



## Cricketfield Road, E5

£680,000

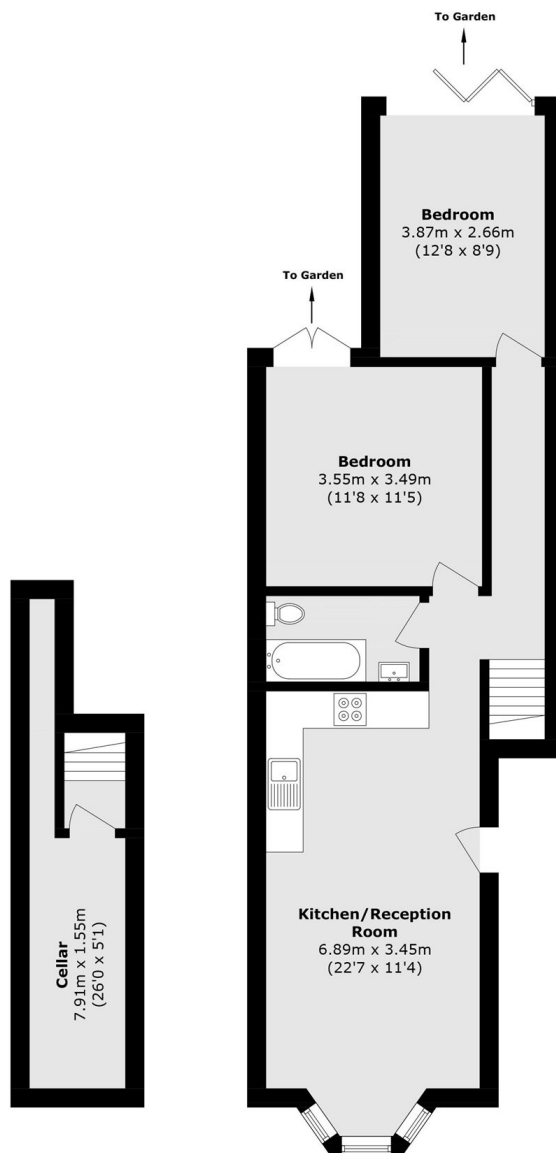
A well-presented two-double-bedroom Victorian flat positioned between Hackney Downs Park and Clapton Pond. The property offers a spacious open-plan kitchen and living area, with the added benefit of a useful utility basement. This space leads out to a sunny private well maintained garden. The garden enjoys morning light, while the living area is naturally illuminated by the warm tones of the evening sky, giving the home a calm and inviting atmosphere throughout the day.

Situated in a vibrant pocket between Chatsworth Road and Mare Street, the property is within walking distance of stations connecting you to key hubs across London. Bars, cafés, restaurants and grocery stores are all close by, placing everyday conveniences and neighbourhood favourites right on your doorstep.

### Features

- Victorian Conversion
- Chain Free
- Two Double Bedrooms
- Utility Basement
- Private Garden
- Open Plan

# Cricketfield Road, London, E5



**Cellar**

**Ground Floor**

Total area (approx.): 68.2 sq. m (734.1 sq. ft)  
(Including Cellar)