



Forge Square, E14

£425,000

A modern two bedroom split level home offering 679 Square Feet of ample living space. Features to include gated entrance, open plan reception area, private entrance and concierge service.

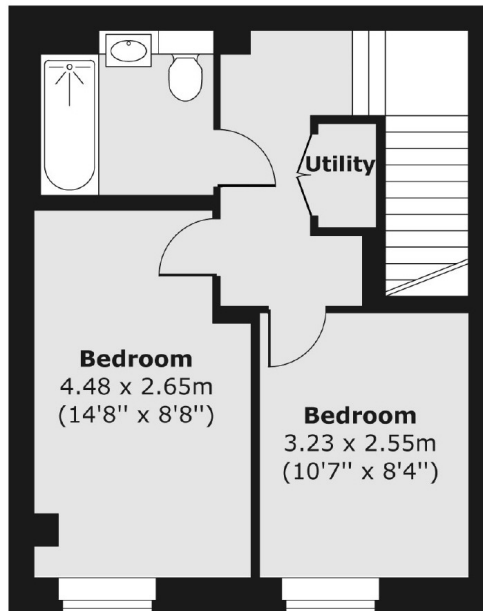
Forge Square located within a gated development in E14 on the Isle of Dogs. The property is 0.5 miles from Island Gardens DLR Station which provides good links to Canary Wharf and The City.

Features

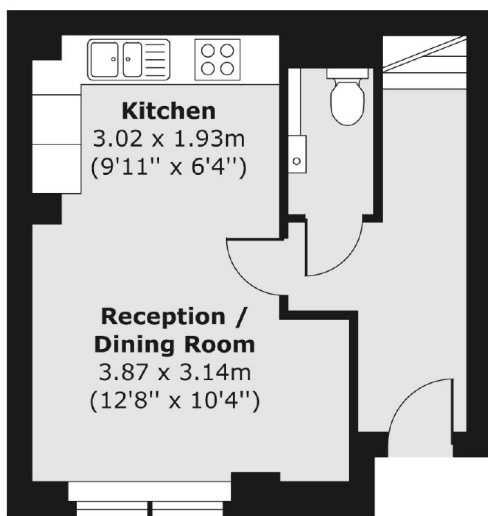
- Gated Development
- Concierge Service
- Split Level
- 679 Square Feet
- Entry Phone System
- Communal Gardens

Forge Square, London, E14

First Floor



Ground Floor



Total area (approx.) 63.08 sq. m (679 sq. ft)